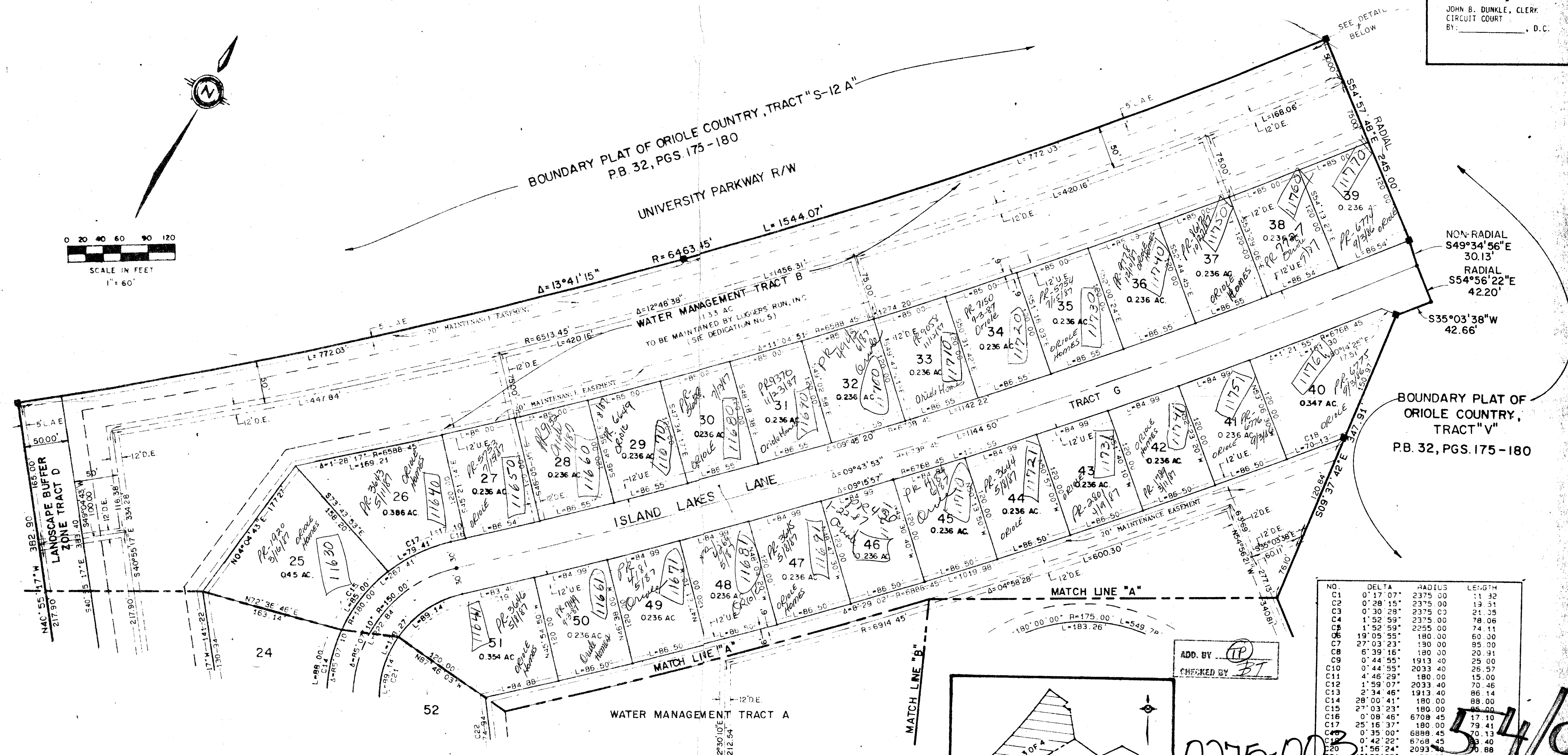
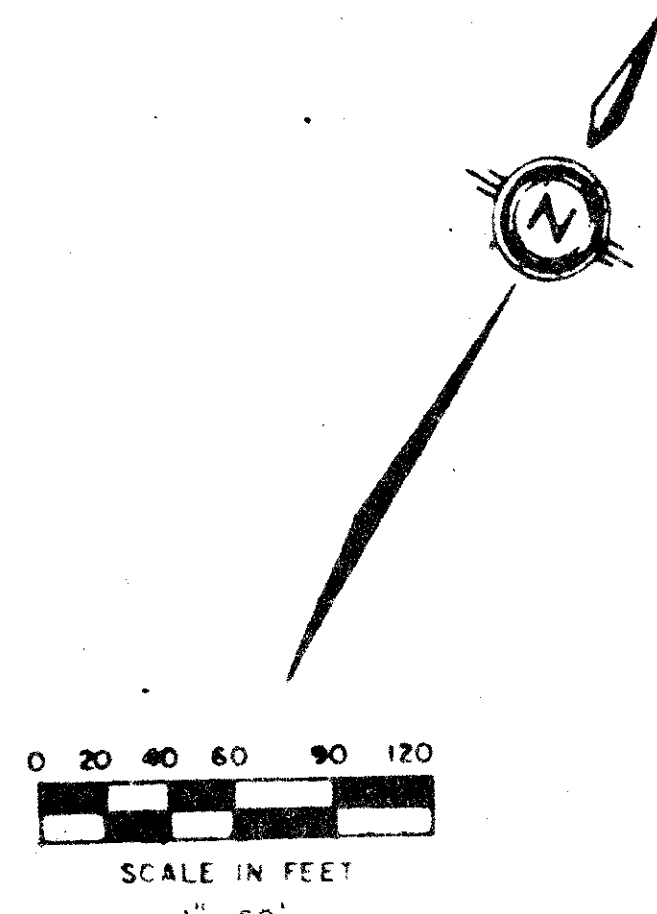


54/9

9

ISLAND LAKES SECTION ONE, PLAT ONE  
 PART OF LOGGERS' RUN, A P.U.D.  
 SITUATE IN SECTION 14, TOWNSHIP 47 SOUTH, RANGE 41 EAST,  
 PALM BEACH COUNTY, FLORIDA, BEING A REPLAT OF A PORTION OF  
 "BOUNDARY PLAT OF ORIOLE COUNTRY", (P.B. 32, PAGES 175-180).  
 SHEET 3 OF 4

STATE OF FLORIDA  
 COUNTY OF PALM BEACH  
 THIS PLAT WAS FILED FOR  
 RECORD AT \_\_\_\_\_ DAY OF \_\_\_\_\_  
 AD. 1986 AND DULY RECORDED  
 IN PLAT BOOK \_\_\_\_\_ ON PAGES  
 \_\_\_\_\_ AND \_\_\_\_\_  
 JOHN B. DUNKLE, CLERK  
 CIRCUIT COURT  
 BY: \_\_\_\_\_, D.C.

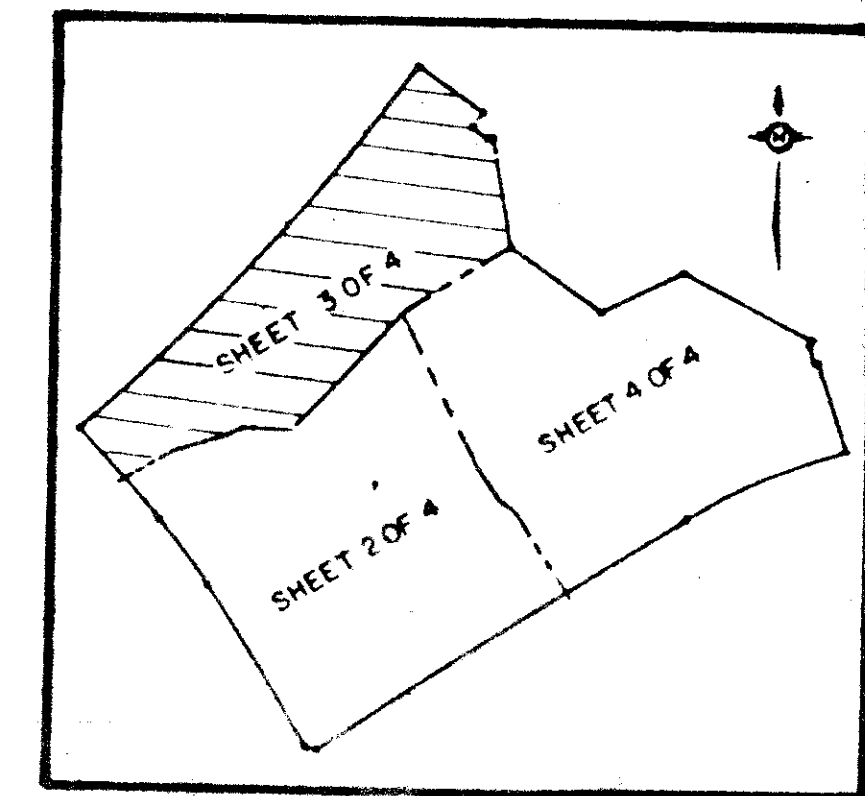


BOUNDARY PLAT OF ORIOLE COUNTRY, TRACT "S-11"  
 P.B. 32, PGS. 175-180

BOUNDARY PLAT OF ORIOLE COUNTRY, TRACT "V"  
 P.B. 32, PGS. 175-180

NO.	DELTA	RADIUS	LENGTH
C1	0° 17' 07"	2375.00	11.32
C2	0° 28' 15"	2375.00	13.51
C3	0° 30' 28"	2375.00	21.35
C4	1° 52' 59"	2375.00	78.06
C5	1° 52' 59"	2255.00	74.11
C6	19° 05' 55"	180.00	60.00
C7	27° 03' 23"	190.00	95.00
C8	6° 39' 16"	180.00	20.91
C9	0° 44' 55"	1913.40	25.00
C10	0° 44' 55"	2033.40	25.57
C11	4° 46' 29"	180.00	15.00
C12	1° 59' 07"	2033.40	70.46
C13	3° 34' 46"	1913.40	66.14
C14	28° 00' 41"	180.00	89.00
C15	27° 03' 23"	180.00	85.00
C16	0° 08' 46"	6708.45	17.10
C17	25° 16' 37"	180.00	79.41
C18	0° 35' 00"	6888.45	70.13
C19	0° 42' 22"	6758.45	83.40
C20	1° 56' 24"	2093.00	70.88
C21	42° 33' 35"	120.00	89.14
C22	1° 56' 24"	2213.40	74.94
C23	1° 13' 54"	2213.40	47.58
C24	1° 13' 54"	2093.00	94.25
C25	45° 00' 00"	120.00	94.25
C26	45° 00' 00"	120.00	94.25
C27	42° 50' 01"	50.00	37.38
C28	42° 50' 00"	25.00	18.69
C29	42° 50' 00"	25.00	18.69
C30	42° 50' 00"	50.00	37.38
C31	2° 00' 00"	55.00	29.38
C32	2° 23' 17"	2375.00	29.11

ADD. BY *TP*  
 CHECKED BY *BT*



0275-003  
 54/9  
 ISLAND LAKES

DRAWING NUMBER

DRAWING NUMBER

DRAWING NUMBER

DETAIL  
 N.T.S.

Meridian Surveying and mapping inc. WEST PALM BEACH, FLORIDA

DRAWN	M.E.H.	DATE	MAY, 1984
CHECKED	SCALE	1" = 60'	
DRAWING NO.	84-P-004		

ISLAND LAKES SECTION ONE  
 PLAT ONE