

DRAWING NUMBER
53/172

REPLAT OF PLAT NO. 1 OF RIVER WALK

IN SECTION 3, TOWNSHIP 41 SOUTH, RANGE 42 EAST

PALM BEACH COUNTY, FLORIDA

SHEET 2 OF 2

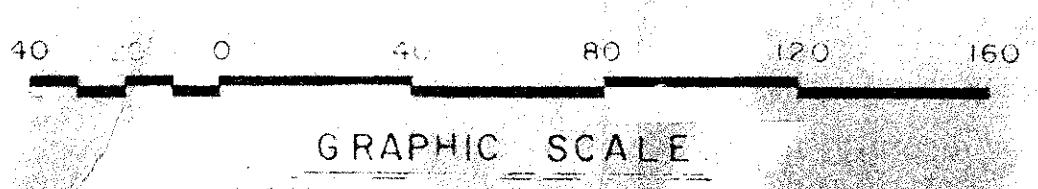
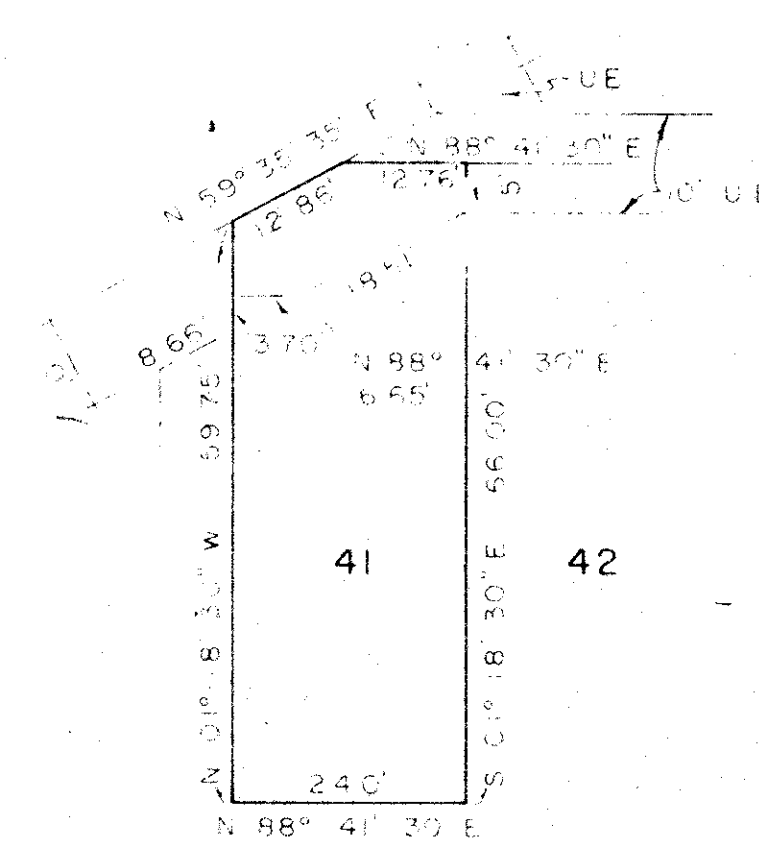
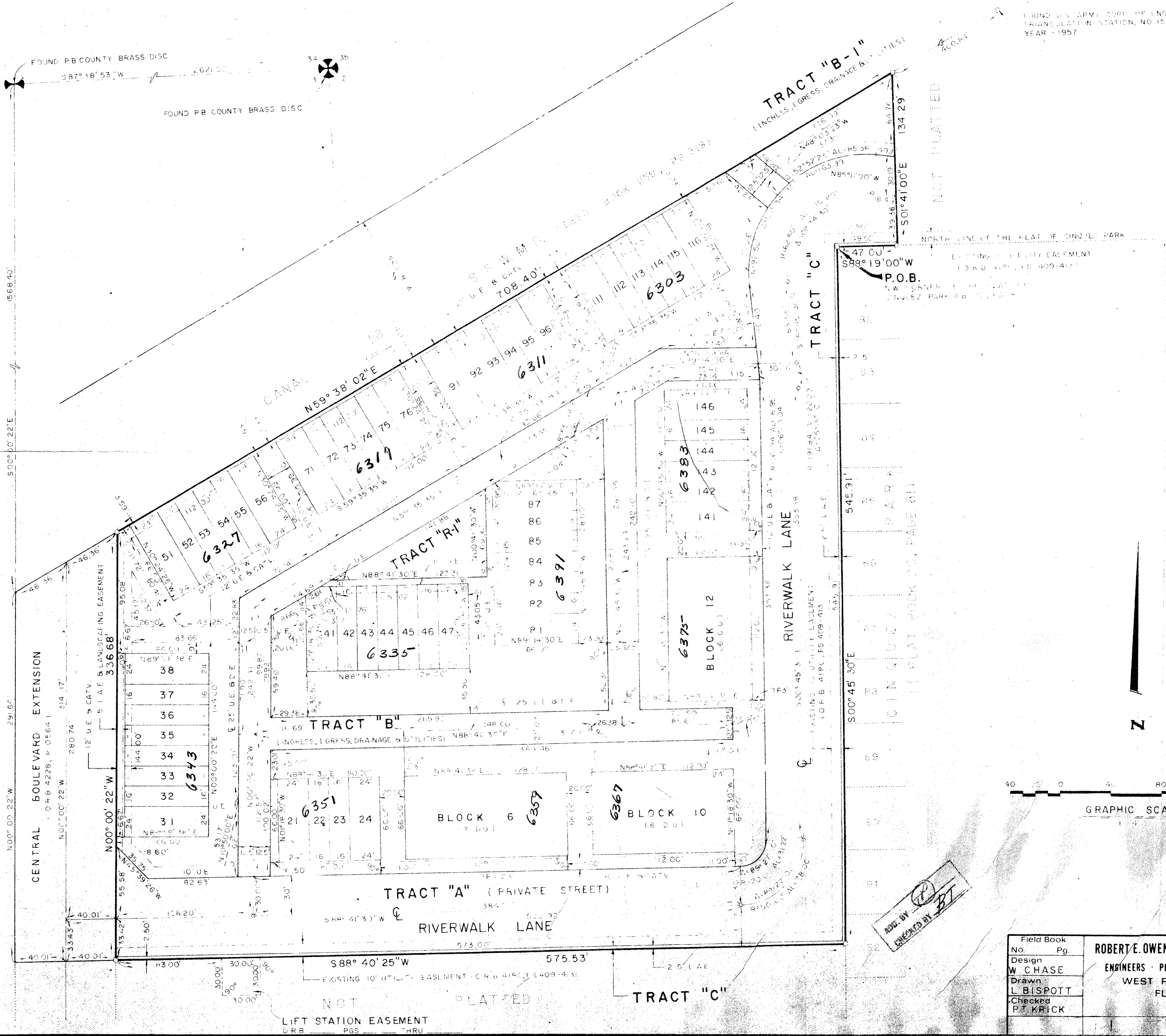
SEPT., 1985

COUNTY OF PALM BEACH
STATE OF FLORIDA
This Plat was filed for record at
this _____ day of _____
19____ and duly recorded in Plat Book No. _____
or page _____
JOHN B. DUNKLE, Clerk, Circuit Court
In _____

DRAWING NUMBER

DRAWING NUMBER

DRAWING NUMBER



0412-001

53/172

NOTE: LINES TO LOTS 51-56, 71-76, 91-96 AND LOTS 116-118 ARE EXTENSIONS OF LOT LINES TO INTERSECT PROPERTY LINES AND NOT 90° TO PROPERTY LINE.

800. BY [Signature]
CHECKED BY [Signature]

Field Book
No. Pg.
Design
W. CHASE
Drawn
L. BISPOTT
Checked
P. KRICK

ROBERT E. OWEN & ASSOCIATES, INC.
ENGINEERS · PLANNERS · SURVEYORS
WEST PALM BEACH
FLORIDA

REPLAT OF
PLAT NO. 1 OF
RIVER WALK

Job No. 85-142
Scale 1"=40'
Date 4/16/85
Sheet 2 of 2