

DRAWING NUMBER  
**53/101**

DRAWING NUMBER

DRAWING NUMBER

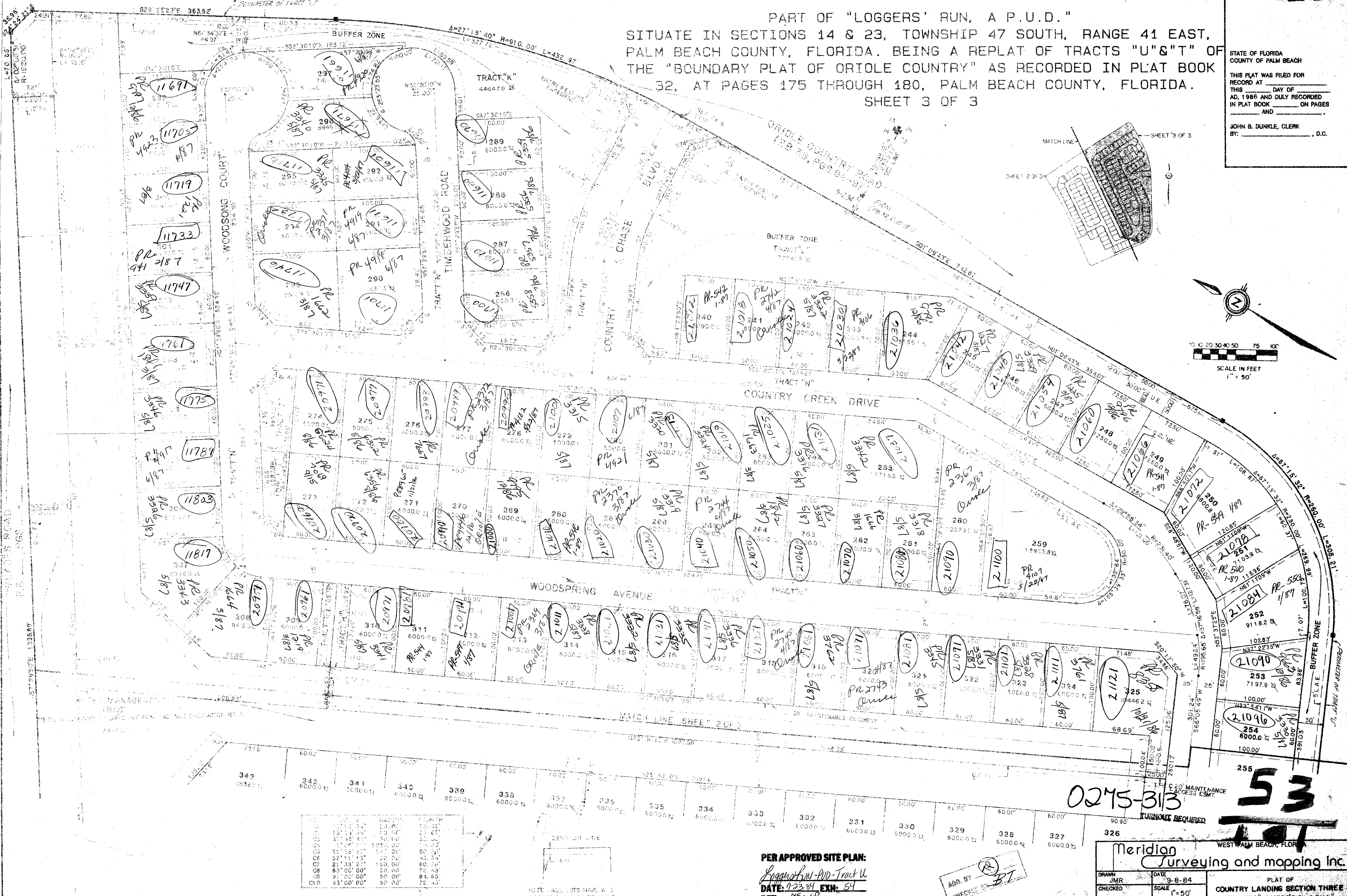
DRAWING NUMBER

# PLAT OF COUNTRY LANDING SECTION THREE

# 101

PART OF "LOGGERS' RUN, A P.U.D."  
SITUATE IN SECTIONS 14 & 23, TOWNSHIP 47 SOUTH, RANGE 41 EAST,  
PALM BEACH COUNTY, FLORIDA. BEING A REPLAT OF TRACTS "U" & "T" OF  
THE "BOUNDARY PLAT OF ORIOLE COUNTRY" AS RECORDED IN PLAT BOOK  
32, AT PAGES 175 THROUGH 180, PALM BEACH COUNTY, FLORIDA.  
SHEET 3 OF 3

STATE OF FLORIDA  
COUNTY OF PALM BEACH  
THIS MAP WAS FILED FOR  
RECORD AT \_\_\_\_\_  
THIS \_\_\_\_\_ DAY OF \_\_\_\_\_  
AD, 1986 AND DULY RECORDED  
IN PLAT BOOK \_\_\_\_\_ ON PAGES  
AND \_\_\_\_\_  
JOHN B. DUNKLE, CLERK  
BY: \_\_\_\_\_, D.C.



**0275-313**  
**53**  
WEST PALM BEACH, FLORIDA

PER APPROVED SITE PLAN:  
*Loggers Run PUD - Tract U*  
DATE: 7-23-84 EXH: 54  
PET: 75-168

ADD BY: *BT*  
CHECKED BY: *BT*

**Meridian**  
Surveying and mapping Inc.  
DRAWN: JMR DATE: 9-8-84  
CHECKED: SCALE: 1"=50'  
DRAWING NO: 84 P 075  
PLAT OF  
COUNTRY LANDING SECTION THREE  
PART OF "LOGGERS' RUN, A P.U.D."

NOTE: ALL LOTS HAVE A 5' ACCESS AND MAINTENANCE EASEMENT SHOWN THIS