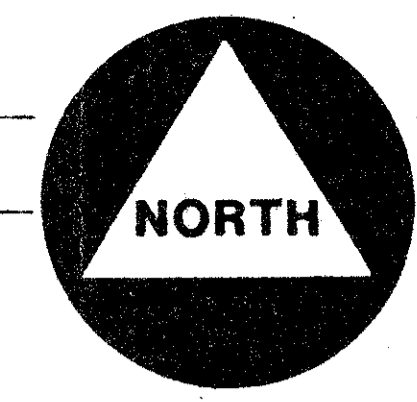
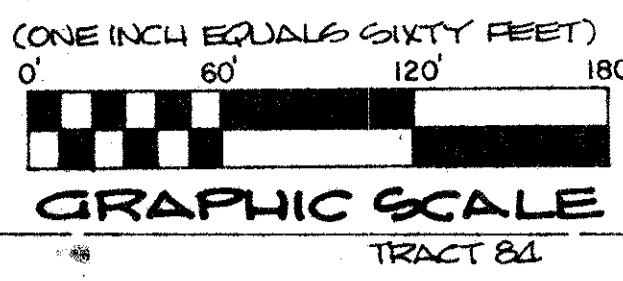


DRAWING NUMBER
53/44



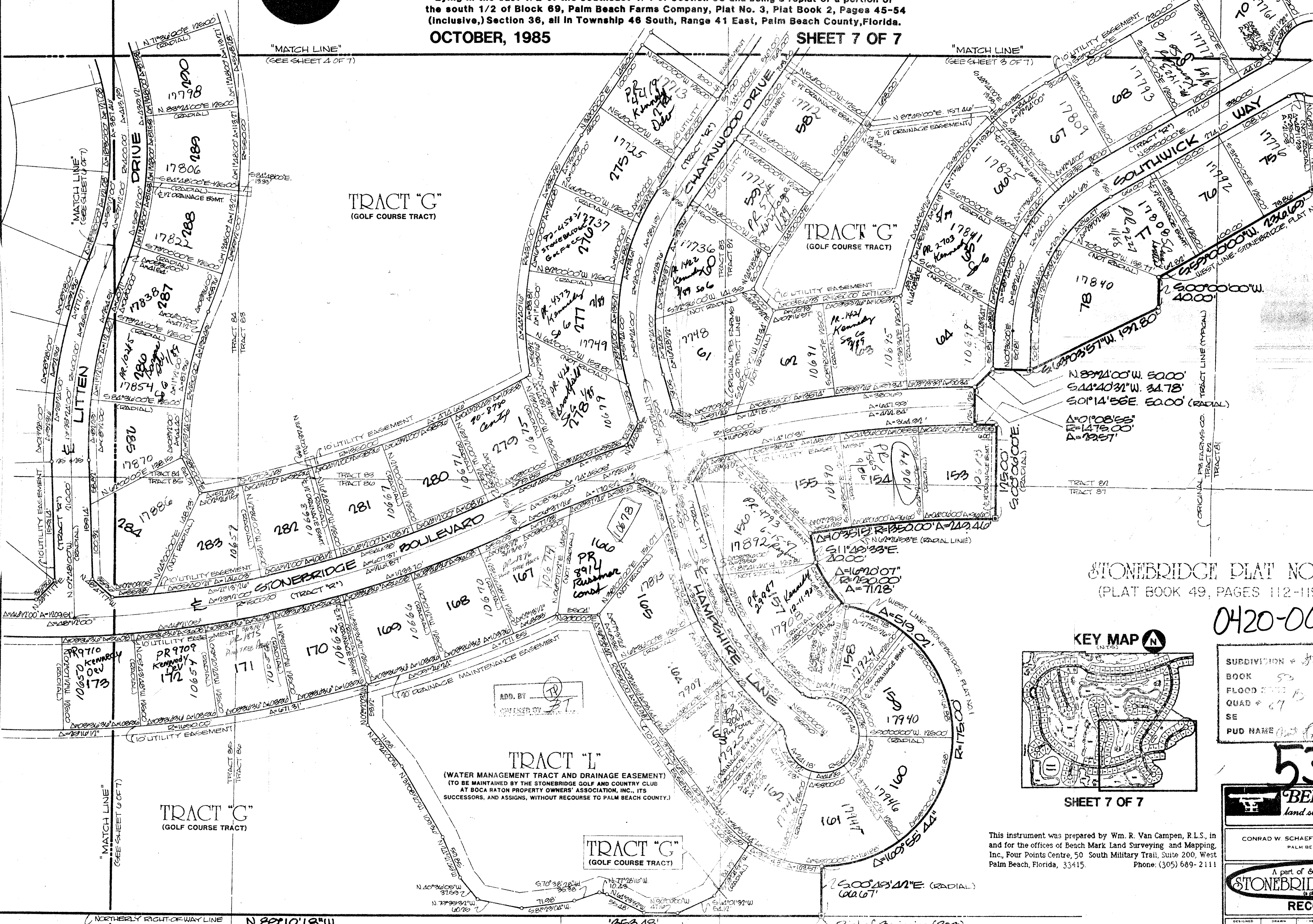
STONEBRIDGE PLAT NO. 2

A part of SOUTHERN MANOR P.U.D.
Lying in the east 1/2 of the southeast 1/4 of Section 35 and being a replat of a portion of the south 1/2 of Block 69, Palm Beach Farms Company, Plat No. 3, Plat Book 2, Pages 45-54 (inclusive), Section 36, all in Township 46 South, Range 41 East, Palm Beach County, Florida.
OCTOBER, 1985

SHEET 7 OF 7

44

State of Florida)
County of Palm Beach)
This Plat was filed for record at _____ this _____ day of _____ A.D., 1986, and duly recorded in Plat Book _____ on pages _____ and _____
John B. Dunkle,
Clerk of the Circuit Court.
by: _____ D.C.



TRACT "G"
(GOLF COURSE TRACT)

TRACT "G"
(GOLF COURSE TRACT)

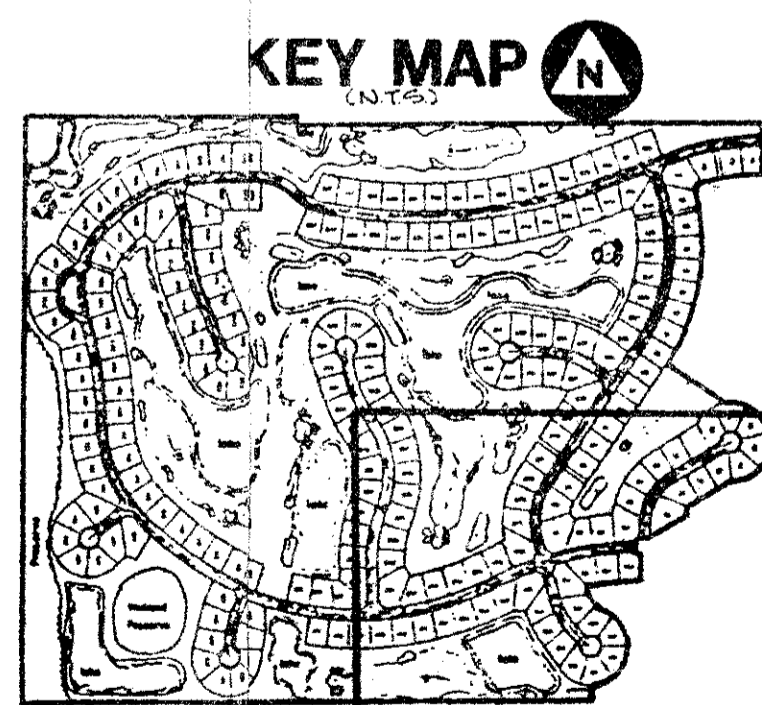
TRACT "L"
(WATER MANAGEMENT TRACT AND DRAINAGE EASEMENT)
(TO BE MAINTAINED BY THE STONEBRIDGE GOLF AND COUNTRY CLUB AT BOCA RATON PROPERTY OWNERS' ASSOCIATION, INC., ITS SUCCESSORS, AND ASSIGNS, WITHOUT RECOURSE TO PALM BEACH COUNTY.)

TRACT "G"
(GOLF COURSE TRACT)

TRACT "G"
(GOLF COURSE TRACT)

STONEBRIDGE PLAT NO. 1
(PLAT BOOK 49, PAGES 112-119)

0420-002



SHEET 7 OF 7

This instrument was prepared by Wm. R. Van Campen, R.L.S., in and for the offices of Bench Mark Land Surveying and Mapping, Inc., Four Points Centre, 50 South Military Trail, Suite 200, West Palm Beach, Florida, 33415. Phone: (305) 689-2111

SUBDIVISION = Stonebridge
BOOK 53 PAGE 44
FLOOD ZONE = FLOOD MAP # 1000
QUAD = 67
SE
PUD NAME = Boca Raton
33433

53/44

BENCH MARK
land surveying and mapping, inc.
CONRAD W. SCHAEFER CONSULTING ENGINEERS, INC.
PALM BEACH COUNTY FLORIDA
A part of SOUTHERN MANOR P.U.D.
STONEBRIDGE PLAT NO. 2
(planned subdivision)
RECORD PLAT

DESIGNED	DRAWN	CHECKED	JOB NO.	DRAWING NO.
DATE	SCALE	APPROVED	FILE NO.	SHEET OF
OCT, 1985	1"=60'			7 7