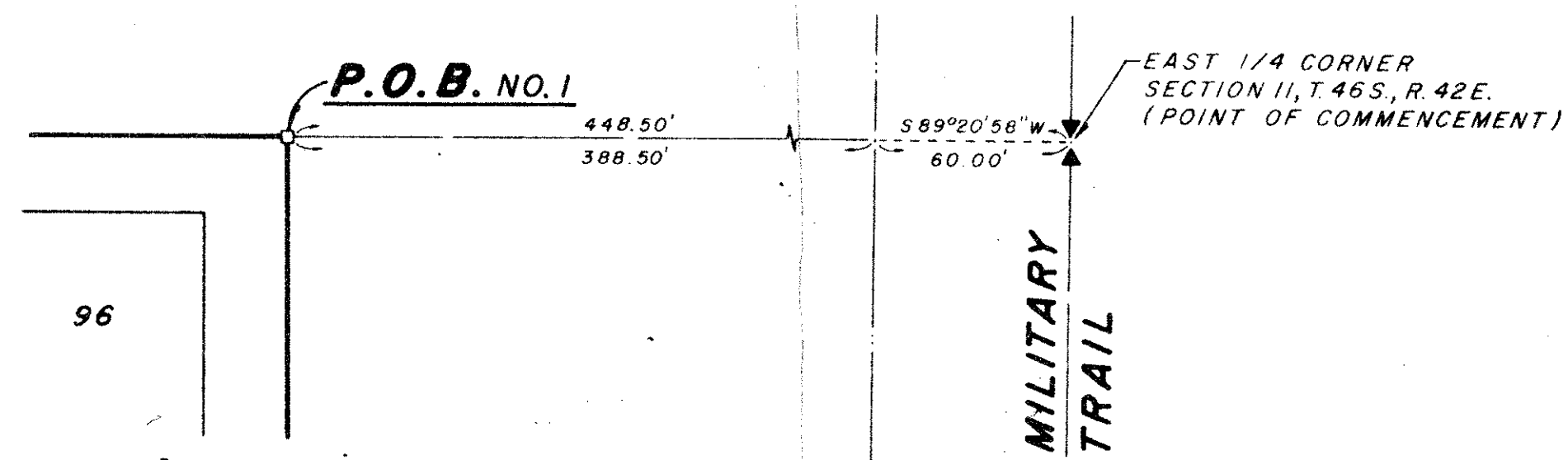
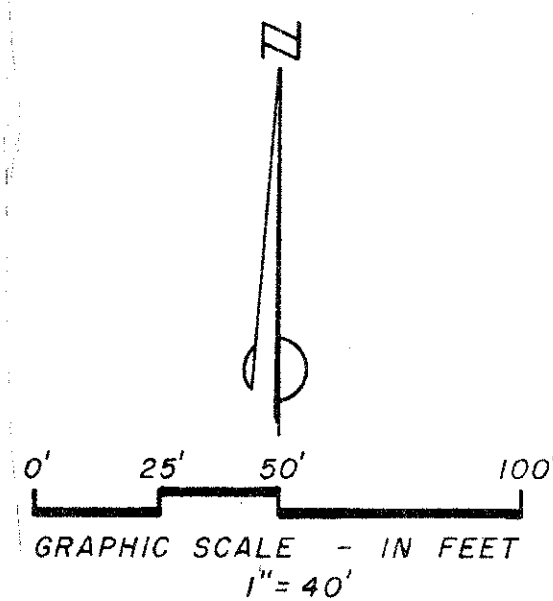


DRAWING NUMBER
52/189

CASA DEL REY (P.U.D.) PLAT NO. 2

189

SHEET 2 OF 3
NOVEMBER 1985



DETAIL "A" NOT TO SCALE

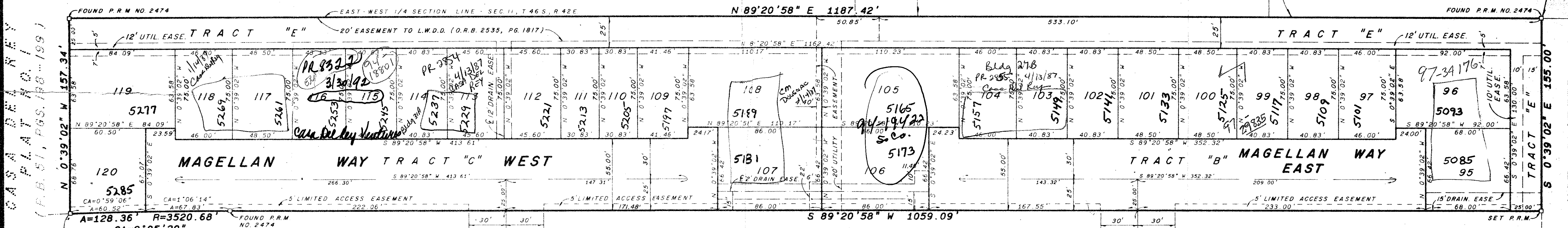
STATE OF FLORIDA
COUNTY OF PALM BEACH SS:
This Plat was filed for record at _____
M. this _____ day of _____ 19____
and duly recorded in Plat Book _____
on Page _____
John B. Dunkle, Clerk Circuit Court
By _____ D.C.

NOT PLATTED

PLAT OF
BEECHWOOD ESTATES
(P.B. 35, PG. 91)

PLAT NO. 2
DELRAY GARDEN ESTATES
(P.B. 23, PG. 139)

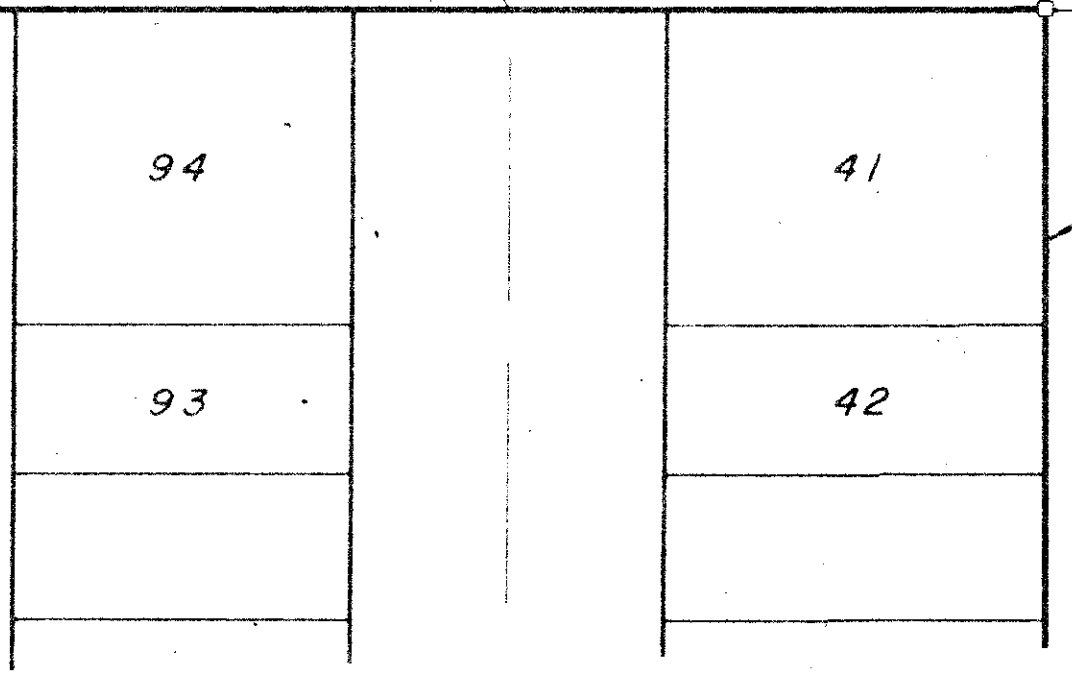
P.O.B. NO. 1
(SEE DETAIL "A")
FOUND P.R.M. NO. 2474



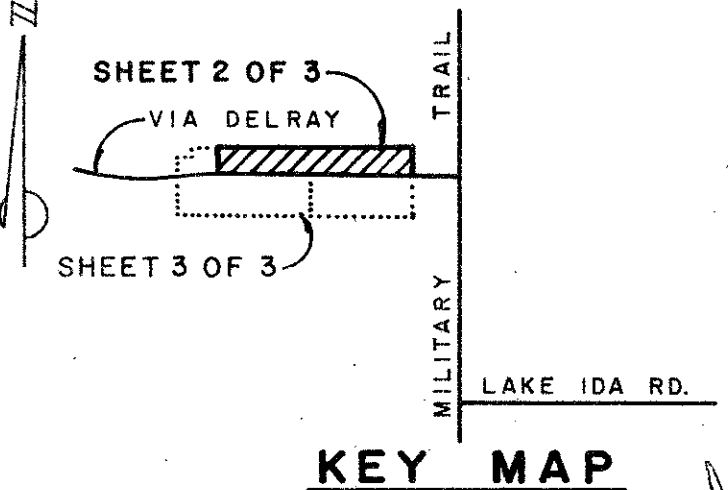
CASA DEL REY
PLAT NO. 1
(P.B. 51, PGS. 198-199)

VIA DELRAY

SEE SHEET 3 OF 3



11/40/42
SUBDIVISION Casa Del Rey
BOOK 52 PAGE 189
FLOOD ZONE B FLOOD MAP 205B
QUAD 36 ZONING
SE ZIP CODE 33445
PUD NAME Plat 2



0443-002 Collect Plat. 81-88

ADD. BY [Signature]
CHECKED BY [Signature]

EWING AND SHIRLEY, INC.
LAND SURVEYORS AND PLANNERS
3767 Lake Worth Road-Suite 118
Lake Worth Florida 33461
(305)968-0421

DRAWING NUMBER

DRAWING NUMBER

DRAWING NUMBER

PLAN-HOLD CORPORATION • IRVINE, CALIFORNIA
REGISTERED BY NUMBER 07384