

52/171

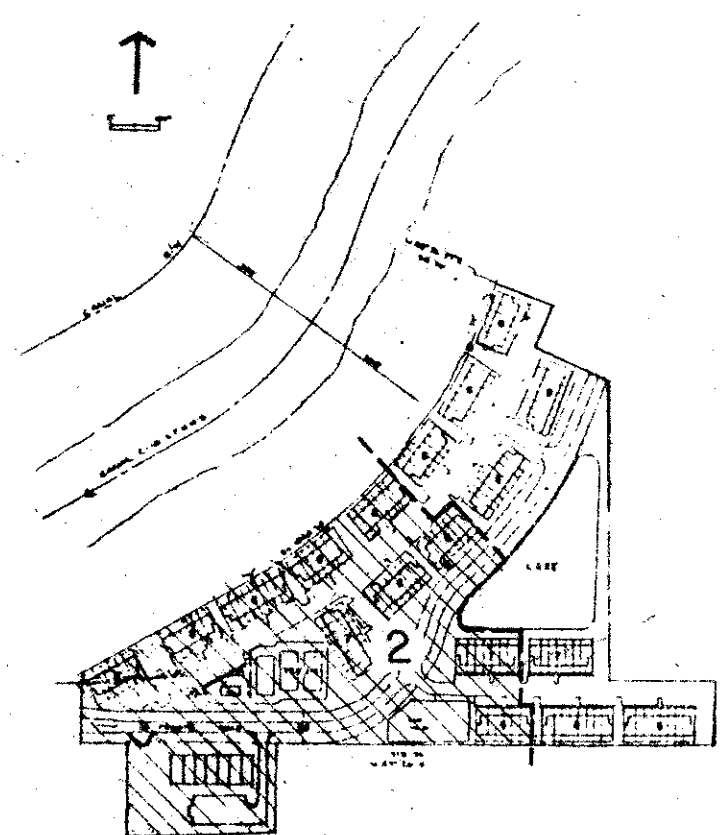
171

PLAT NO. 2 OF RIVER WALK

IN SECTION 3, TOWNSHIP 41 SOUTH, RANGE 42 EAST
AND REPLAT OF LOTS 46, 47 80 & 81 OF CINQUEZ PARK (P.B. 20 PAGE 81)
PALM BEACH COUNTY, FLORIDA

SHEET 2 OF 3

AUGUST 1985



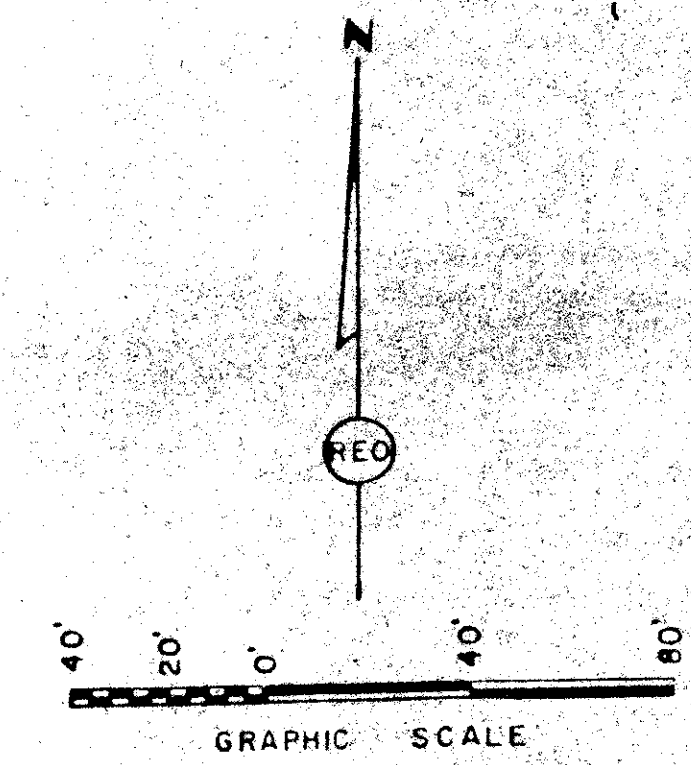
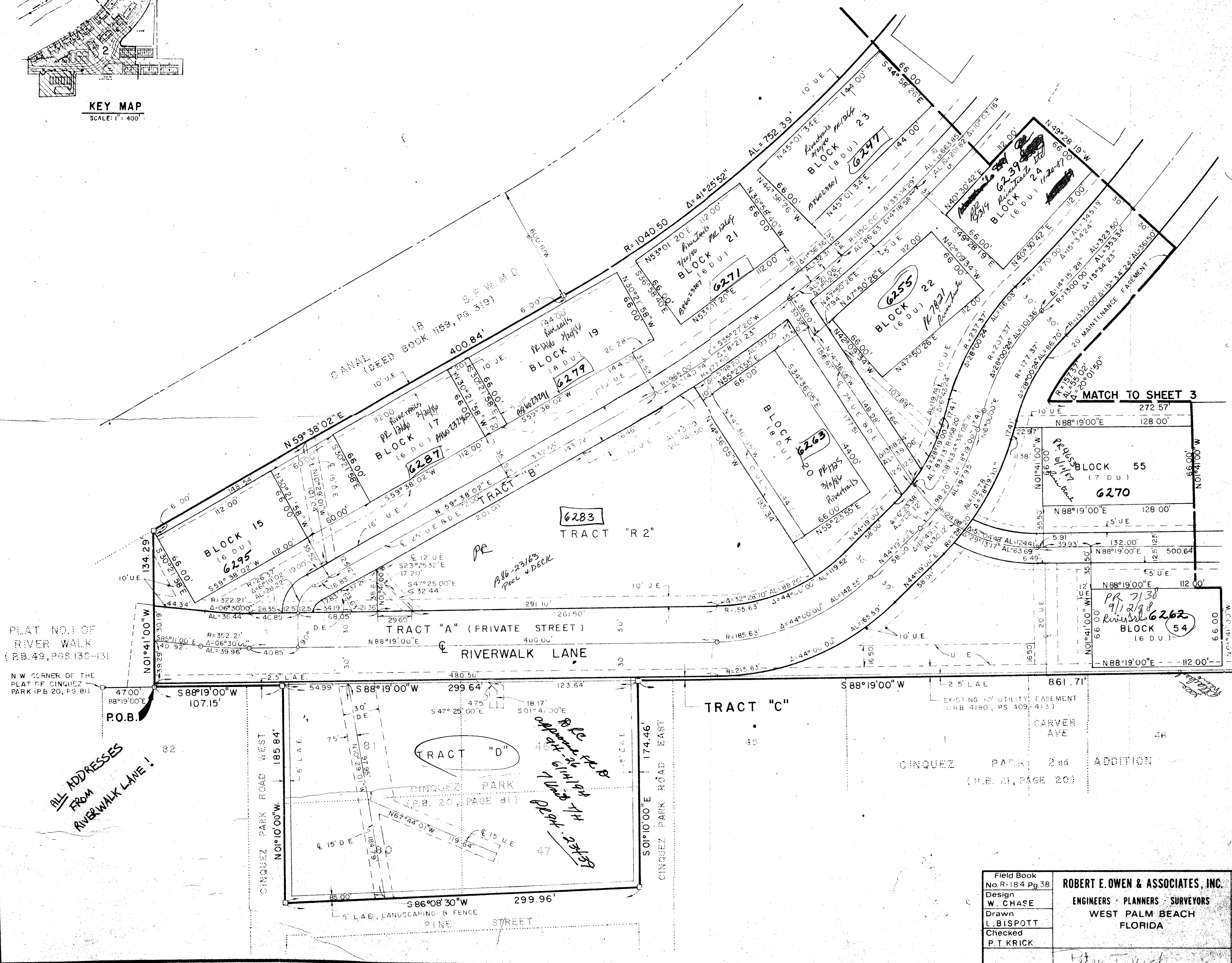
KEY MAP
SCALE: 1" = 400'

COUNTY OF PALM BEACH
STATE OF FLORIDA
This Plat was filed for record at _____ M
this _____ day of _____
19____ and duly recorded in Plat Book No. _____
_____ on page _____
JOHN B. DUNKLE, Clerk, Circuit Court.
By: _____ D.C.

DRAWING NUMBER

DRAWING NUMBER

DRAWING NUMBER



3/4/82
SUBDIVISION - River Walk
BOOK 55 PAGE 171
FLOOD ZONE AS-6 FLOOD MAP # 1058
QUAD # 20 ZONING RH
DE ZIP CODE 33458
PUD NAME Plat 2

FSZ #4 (B)
map 1
#485790 per file
Letter on file
Chas. J. Wacker
Co. Engr.
9/29/85
RH

0412 002

ADD. BY [Signature]
CHECKED BY [Signature]

52/171

Field Book No. R-184 Pg. 38	ROBERT E. OWEN & ASSOCIATES, INC. ENGINEERS - PLANNERS - SURVEYORS WEST PALM BEACH FLORIDA	Job No. 83-1119
Design W. CHASE		Scale 1" = 40'
Drawn L. BISPOTT		Date 8/16/85
Checked P. T. KRICK		Sheet 2
		of 3
	File No. BF-2385 B	

PLAT NO. 2 OF
RIVER WALK