

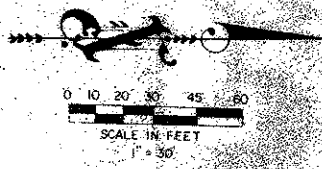
# RAINBERRY PARK PLAT NO. 5

PART OF RAINBERRY OF WEST BOCA P.U.D.  
 BEING A REPLAT OF A PART OF BLOCK 4 OF RAINBERRY PARK PLAT NO. 4 (PB 51, PG. 163-165).  
 SITUATE IN SECTION 19, TOWNSHIP 47 SOUTH, RANGE 42 EAST,  
 PALM BEACH COUNTY, FLORIDA.

118

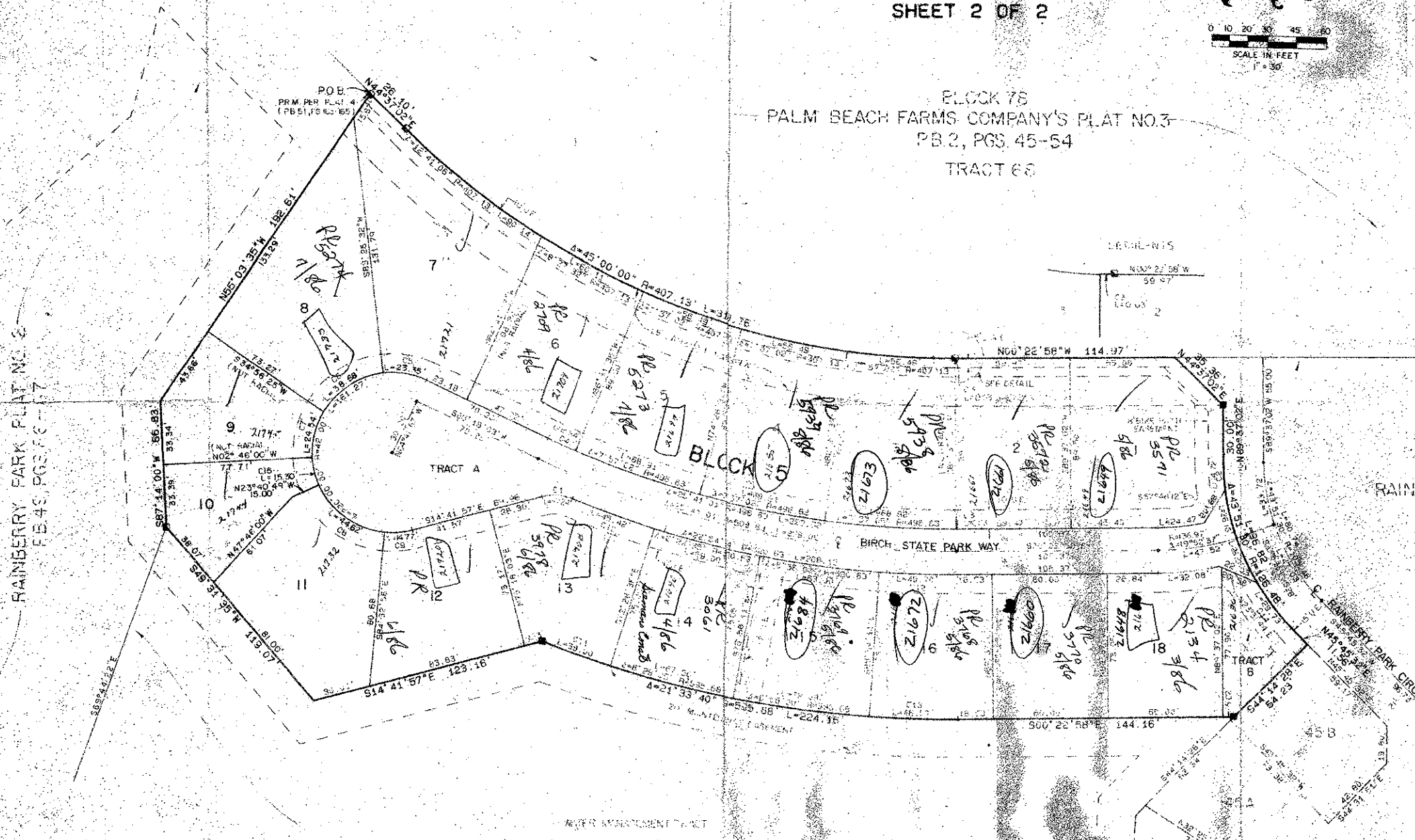
STATE OF FLORIDA  
 COUNTY OF PALM BEACH  
 THIS PLAT WAS FILED FOR  
 RECORD AT \_\_\_\_\_  
 THIS \_\_\_\_\_ DAY OF \_\_\_\_\_  
 A.D. 1995 AND IS RECORDED  
 IN PLAT BOOK \_\_\_\_\_ ON PAGE(S)  
 AND \_\_\_\_\_  
 JOHN B. DURRLE, CLERM  
 BY \_\_\_\_\_

SHEET 2 OF 2



BLOCK 75  
 PALM BEACH FARMS COMPANY'S PLAT NO. 3  
 PB. 2, PGS. 45-54  
 TRACT 60

NO.	DELTA	RADIUS	LENGTH
C1	31°33'14"	25.00'	16.24'
C2	6°40'02"	126.48'	14.72'
C3	0°00'14"	496.63'	.03'
C4	1°49'39"	496.63'	15.84'
C5	31°51'51"	42.00'	23.35'
C6	52°46'16"	42.00'	38.68'
C7	33°28'40"	42.00'	24.54'
C8	60°52'09"	42.00'	44.62'
C9	20°09'01"	42.00'	14.77'
C10	4°59'53"	520.63'	45.42'
C11	3°39'18"	595.68'	38.00'
C12	4°28'47"	520.63'	40.70'
C13	1°38'42"	595.68'	46.57'
C14	13°27'57"	126.48'	25.35'
C15	20°52'26"	42.00'	15.30'



Division of Rainbow Park 5  
 BOOK 52 PAGE 114  
 PLAT NO. 54 1000 MAP # 5380  
 SR PUP  
 PDD NAME Rainbow Park  
 Group 11  
 75 35 Home  
 83-57  
 120  
 Morris

0 0372-304

See BACK

52/118

Meridian  
 Surveying and mapping inc.  
 WEST PALM BEACH, FLORIDA

DRAWN	MEH	DATE	JUNE 1995
CHECKED		SCALE	1" = 30'
DRAWING NO.	83-P-048	RAINBERRY PARK PLAT NO. 5	

DRAWING NUMBER 52/118  
 PLAN FILED CORPORATION • IRVINE, CALIFORNIA