

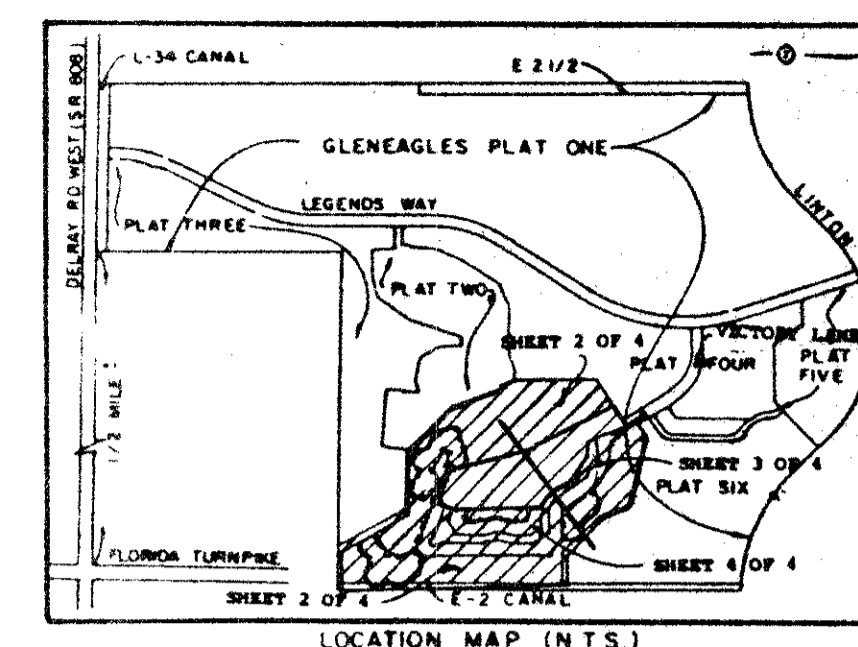
DRAWING NUMBER  
**52/63**

**63**

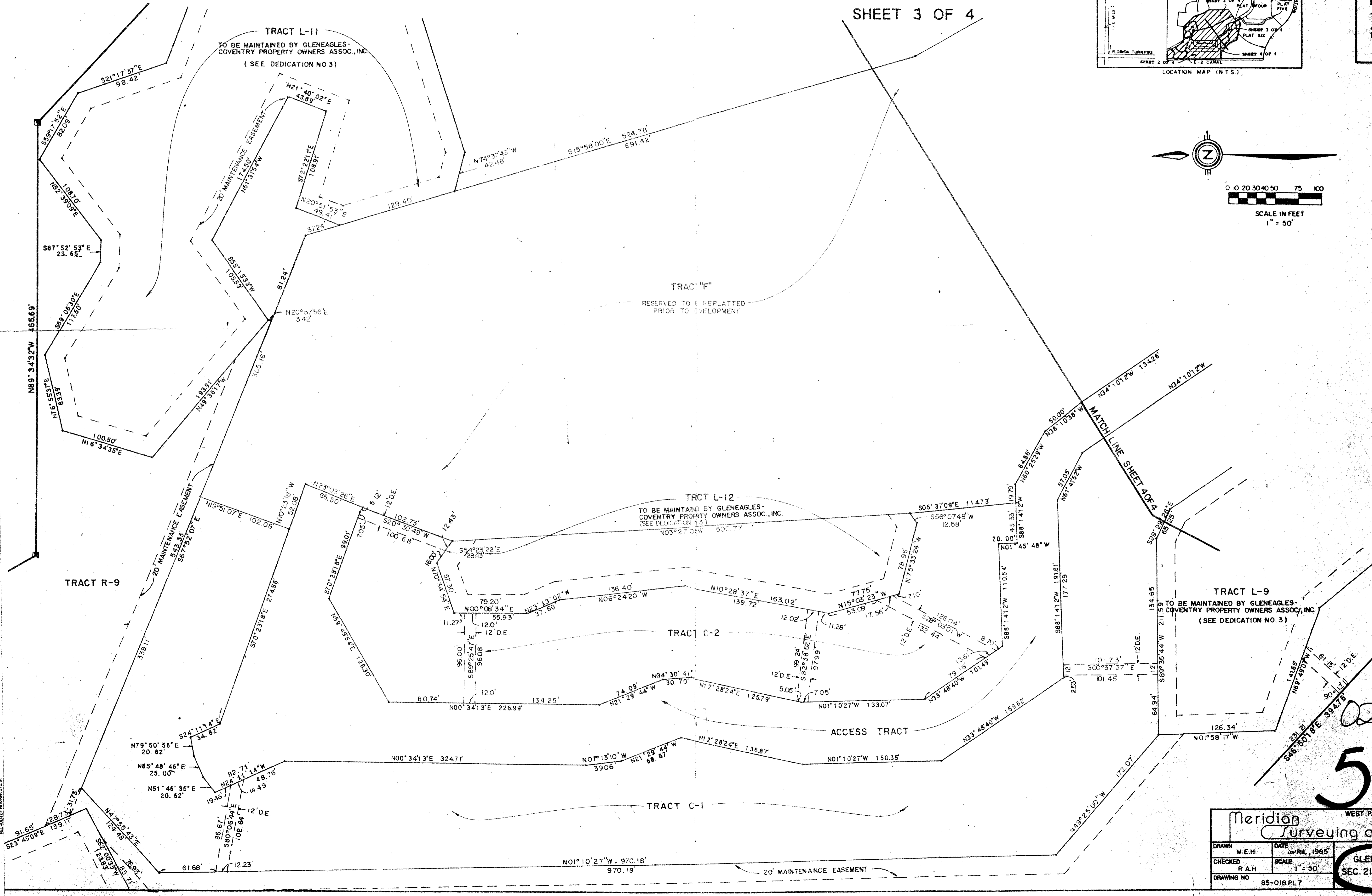
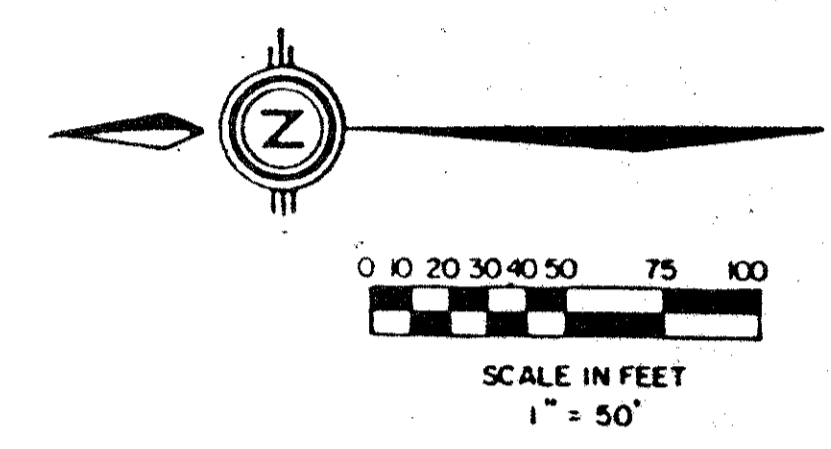
# GLENEAGLES PLAT SEVEN

PARCEL D, PART OF COVENTRY, A P.U.D.  
SITUATE IN SECTION 21, TOWNSHIP 46 SOUTH, RANGE 42 EAST,  
PALM BEACH COUNTY, FLORIDA, BEING A REPLAT OF A PORTION  
OF GLENEAGLES PLAT ONE, (P.B. 50, P. 63 - 65).

SHEET 3 OF 4



STATE OF FLORIDA  
COUNTY OF PALM BEACH  
THIS PLAT WAS FILED FOR  
RECORD AT \_\_\_\_\_ DAY OF \_\_\_\_\_  
AD, 1985 AND DULY RECORDED  
IN PLAT BOOK \_\_\_\_\_ ON PAGES  
\_\_\_\_\_ AND \_\_\_\_\_  
BY: JOHN B. DUNKLE, CLERK  
D.C.



DRAWING NUMBER

DRAWING NUMBER

DRAWING NUMBER

0230-007  
**52/63**

Meridian Surveying and mapping inc. WEST PALM BEACH, FLORIDA

DRAWN	M.E.H.	DATE	APRIL, 1985
CHECKED	R.A.H.	SCALE	1" = 50'
DRAWING NO	85-018 PL 7	GLENEAGLES PLAT SEVEN SEC. 21, TWP. 46 S., RGE. 42 E	