

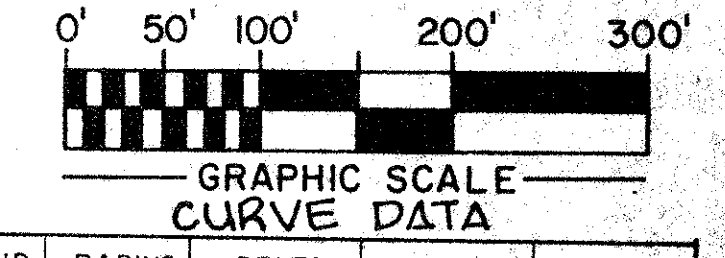
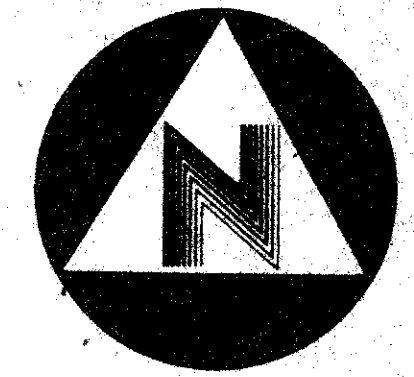
DRAWING NUMBER
52/54

SHERBROOKE PARCEL "C", PLAT ONE

52/54

A PART OF
A' PLANNED UNIT DEVELOPMENT
LYING IN SECTION 6, TOWNSHIP 45 SOUTH, RANGE 42 EAST
PALM BEACH COUNTY, FLORIDA

BEING A REPLAT OF A PORTION OF BLOCKS 37 & 42, PALM BEACH FARMS COMPANY, PLAT NO. 3,
PLAT BOOK 2, PAGES 45 THROUGH 54 INCLUSIVE, PUBLIC RECORDS, PALM BEACH COUNTY, FLORIDA
JANUARY 1985



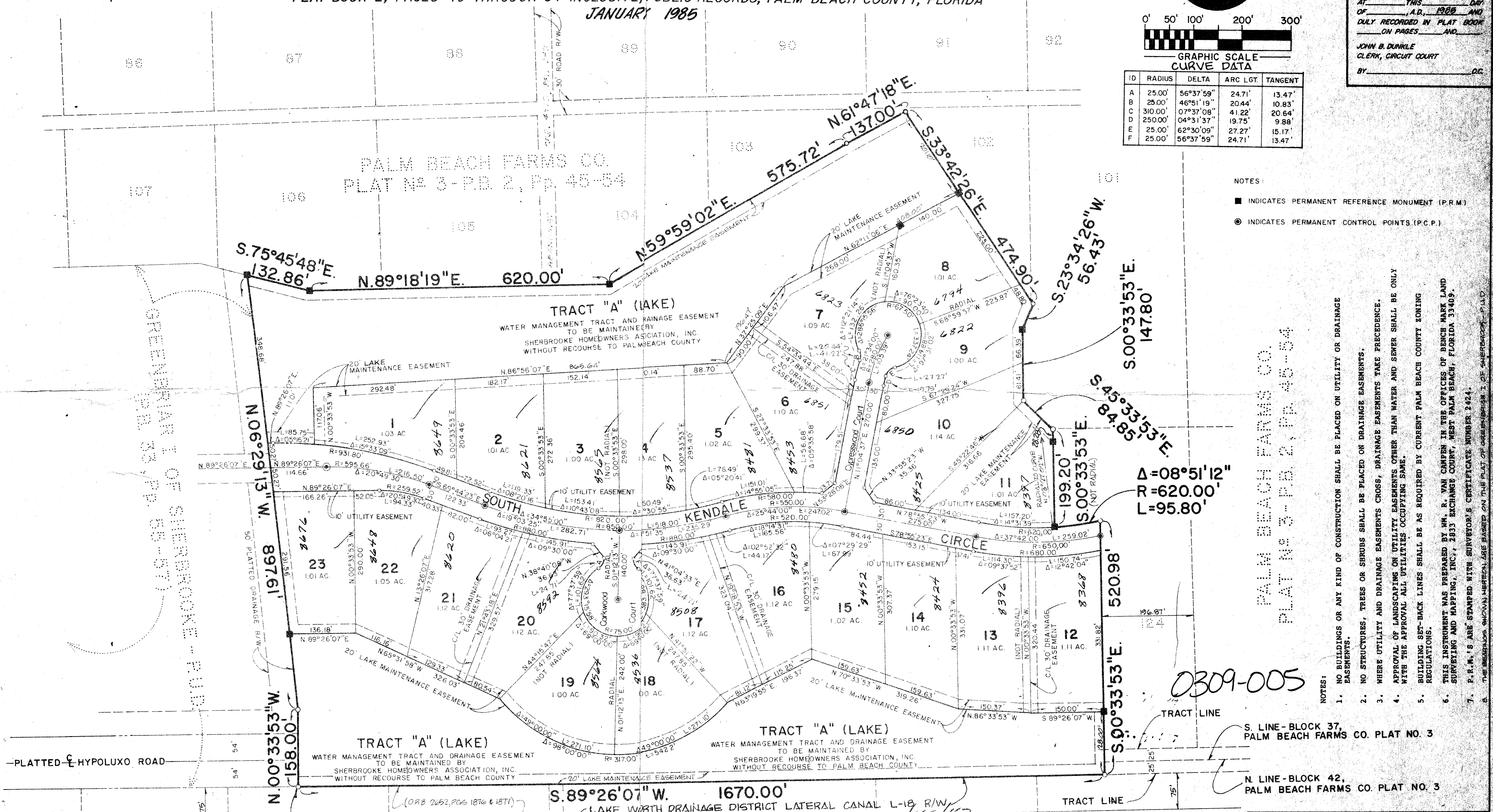
ID	RADIUS	DELTA	ARC LGT	TANGENT
A	25.00'	56°37'59"	24.71'	13.47'
B	25.00'	46°51'19"	20.44'	10.83'
C	310.00'	0°37'08"	41.22'	20.64'
D	250.00'	04°31'37"	19.75'	9.88'
E	25.00'	62°30'09"	27.27'	15.17'
F	25.00'	56°37'59"	24.71'	13.47'

STATE OF FLORIDA
COUNTY OF PALM BEACH
THIS PLAT WAS FILED FOR RECORD
AT _____ THIS _____ DAY
OF _____, A.D. 1985
DAILY RECORDED IN PLAT BOOK
ON PAGES _____ AND _____
JOHN B. DUNKLE
CLERK, CIRCUIT COURT
BY _____ D.C.

DRAWING NUMBER

DRAWING NUMBER

DRAWING NUMBER



- NOTES:
- INDICATES PERMANENT REFERENCE MONUMENT (P.R.M.)
 - INDICATES PERMANENT CONTROL POINTS (P.C.P.)

- NOTES:
1. NO BUILDINGS OR ANY KIND OF CONSTRUCTION SHALL BE PLACED ON UTILITY OR DRAINAGE EASEMENTS.
 2. NO STRUCTURES, TREES OR SHRUBS SHALL BE PLACED ON DRAINAGE EASEMENTS.
 3. WHERE UTILITY AND DRAINAGE EASEMENTS CROSS, DRAINAGE EASEMENTS TAKE PRECEDENCE.
 4. APPROVAL OF LANDSCAPING ON UTILITY EASEMENTS OTHER THAN WATER AND SEWER SHALL BE ONLY WITH THE APPROVAL ALL UTILITIES OCCUPYING SAME.
 5. BUILDING SET-BACK LINES SHALL BE AS REQUIRED BY CURRENT PALM BEACH COUNTY ZONING REGULATIONS.
 6. THIS INSTRUMENT WAS PREPARED BY W. R. VAN CAMPEN IN THE OFFICES OF BENCH MARK LAND SURVEYING AND MAPPING, INC., 2835 EXCHANGE COURT, WEST PALM BEACH, FLORIDA 33409.
 7. P.R.M.'S ARE STAMPED WITH SURVEYOR'S CERTIFICATE NUMBER 2424.
 8. THE BEARINGS SHOWN HEREON ARE BASED ON THE PLAT OF SHERBROOKE I OF SHERBROOKE - P.U.D.

S. LINE - BLOCK 37, PALM BEACH FARMS CO. PLAT NO. 3
N. LINE - BLOCK 42, PALM BEACH FARMS CO. PLAT NO. 3

SUBDIVISION: Sherbrooke
BOOK 49, PAGE 54
PLAT NO. 170A
DATE: 4/18/85
RE: 49
TOTAL LOTS: 23
DENSITY THIS PLAT: 0.55 D.U./AC.

52/54

BENCH MARK
land surveying and mapping, inc.
WEST PALM BEACH, FLORIDA

CONRAD W. SCHAEFER CONSULTING ENGINEERS, INC.
PALM BEACH COUNTY, FLORIDA

SHERBROOKE PARCEL "C"
PLAT ONE

DESIGNED	DRAWN	CHECKED	JOB NO.
CS	TAL	TLO	84-715
DATE	SCALE	APPROVED	SHEET
JAN. 85	1"=100'	CS	2 OF 2