

DRAWING NUMBER
52/22

DRAWING NUMBER

DRAWING NUMBER

DRAWING NUMBER

A PORTION OF A P.U.D. LAKESIDE GREEN-PLAT NO. 4-B

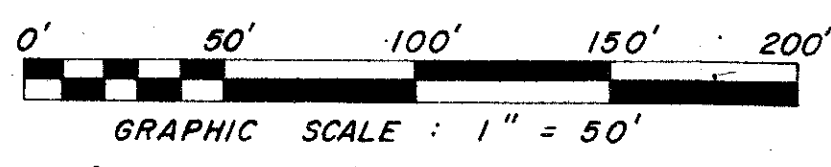
SECTION 12, TOWNSHIP 43 SOUTH, RANGE 42 EAST

PALM BEACH COUNTY, FLORIDA

IN 3 SHEETS SHEET NO. 3

SEPTEMBER, 1985

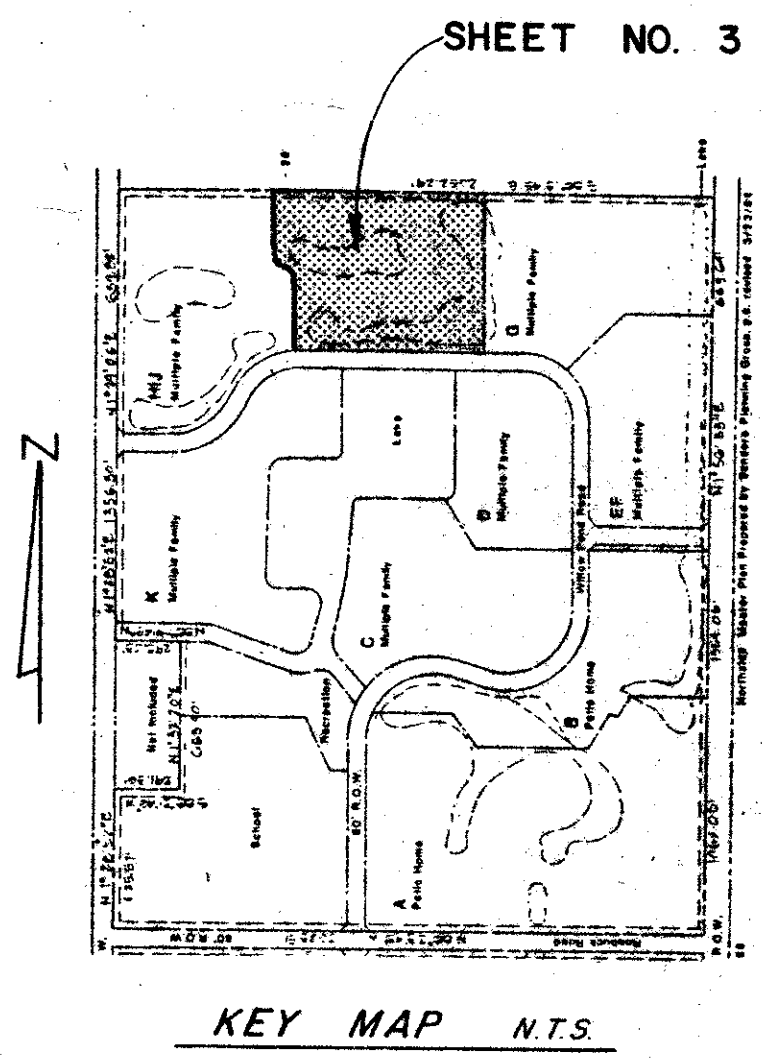
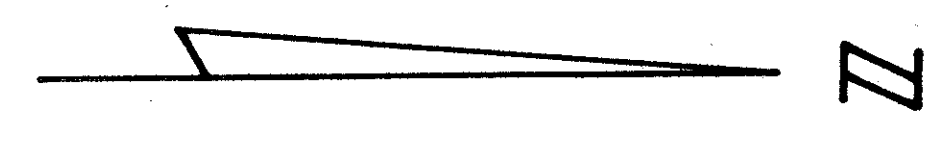
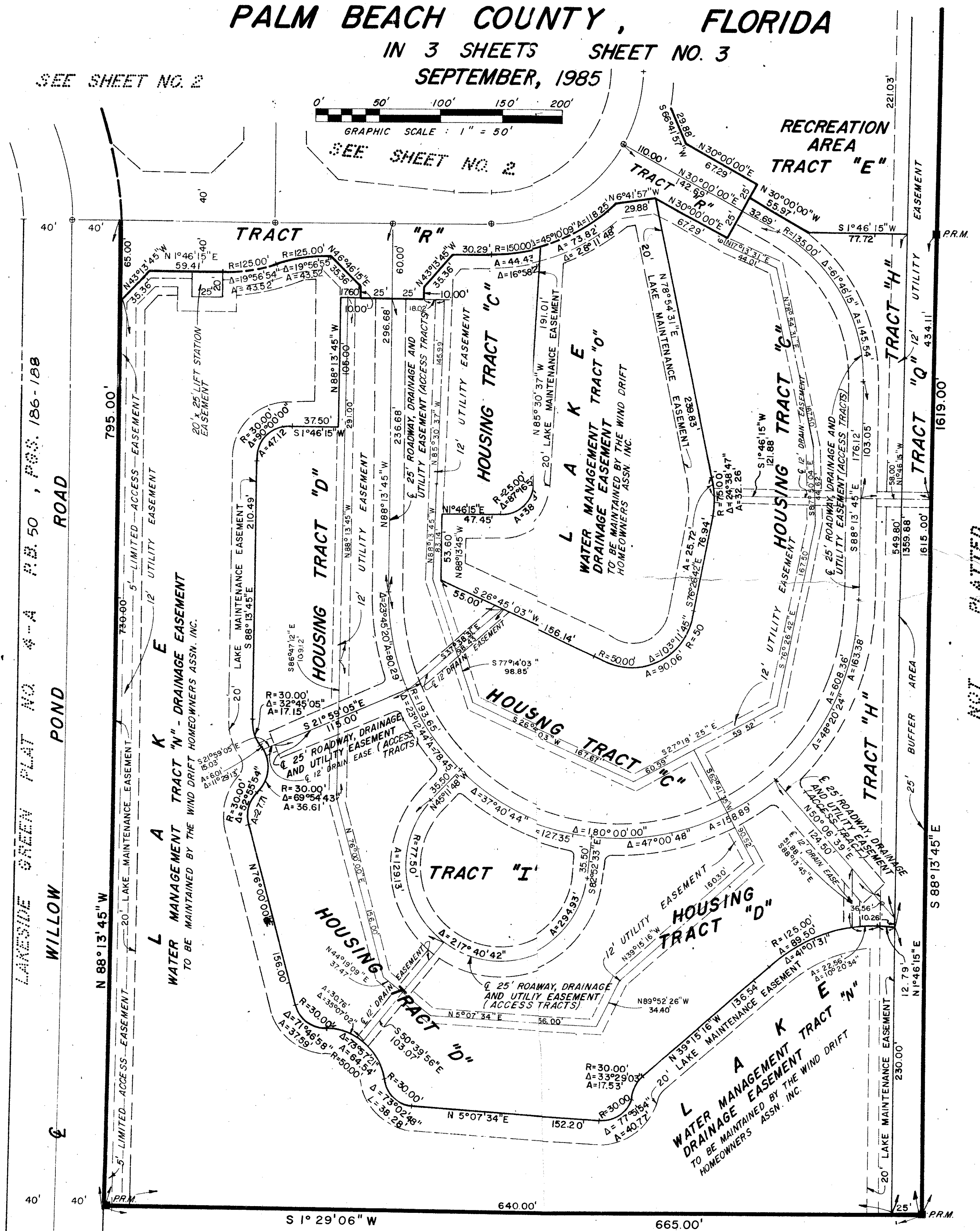
SEE SHEET NO. 2



SEE SHEET NO. 2

22

STATE OF FLORIDA }
COUNTY OF PALM BEACH }
This Plat was filed for record at _____ M.
this _____ day of _____
19 _____, and duly recorded in Plat Book No. _____
on page _____
JOHN B. DUNKLE, Clerk Circuit Court
By _____, D.C.



KEY MAP N.T.S.

NOT PLATTED

0265-304

52/22

THIS INSTRUMENT WAS PREPARED BY JOSEPH M. TUCKER IN THE OFFICES OF ROSSI AND MALAVASI ENGINEERS, INC., 1675 PALM BEACH LAKES BLVD. WEST PALM BEACH, FLORIDA 33409. PHONE: 737-6546

ROSSI AND MALAVASI ENGINEERS, INC. WEST PALM BEACH, FLORIDA		A PORTION OF A P.U.D. LAKESIDE GREEN-PLAT 4-B IN 3 SHEETS SHEET NO. 3	
Date	SEPTEMBER, 1985	Designed	R. THOMPSON
Drawn	C. GOSS	Scale	1" = 50'
Checked		Job No.	3304-84
		File No.	5-1304-80
			3 of 3