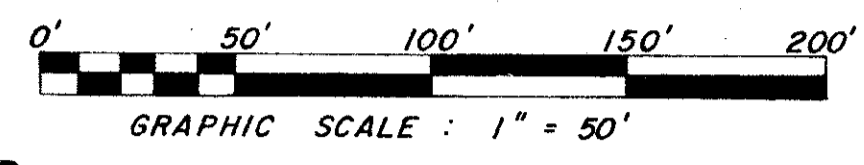
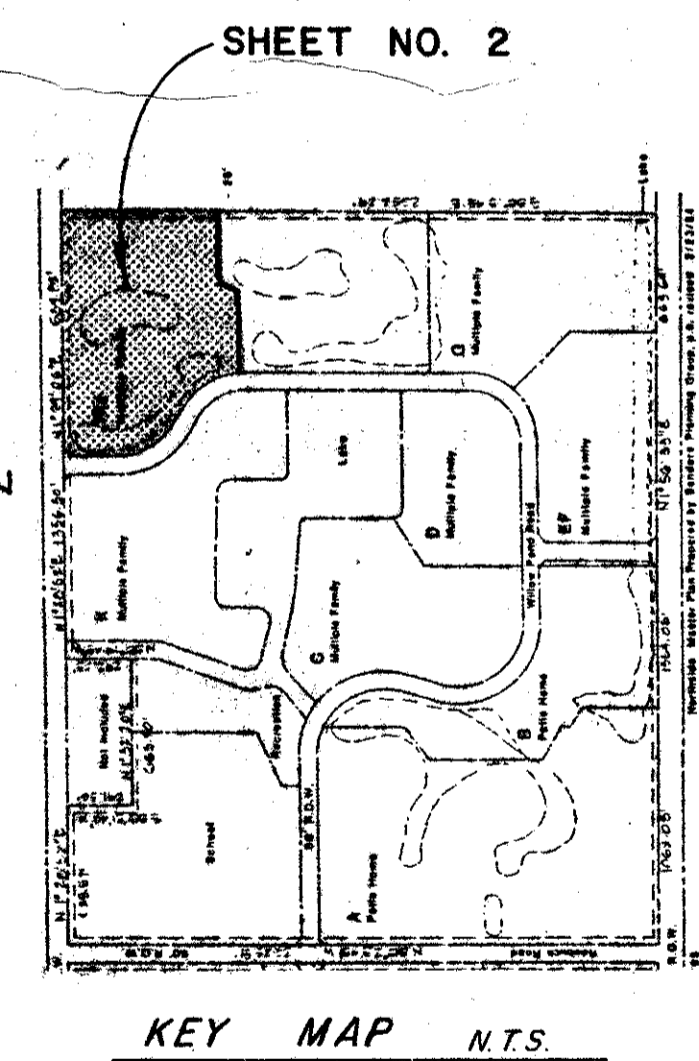
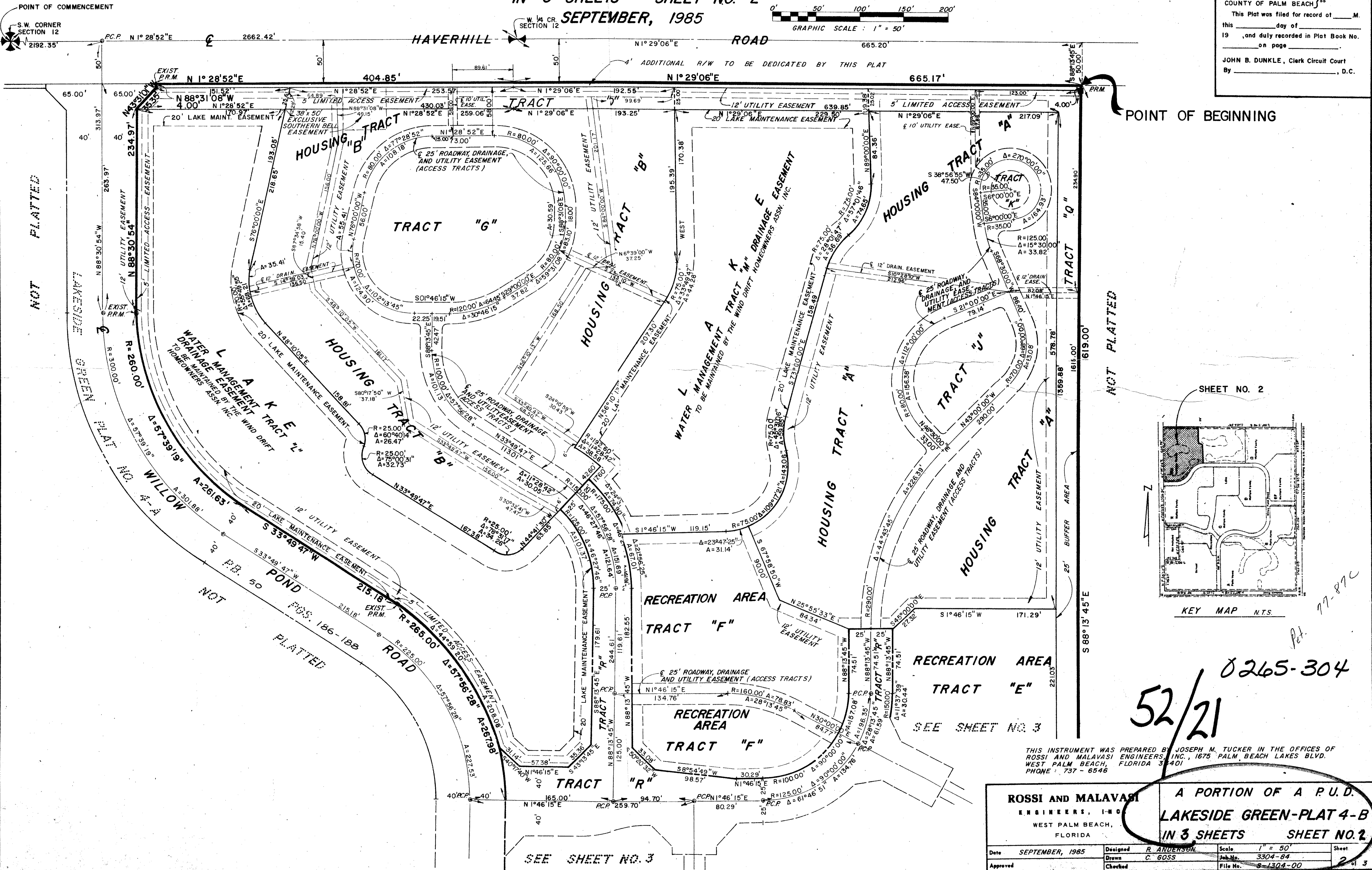


A PORTION OF A P.U.D.
LAKESIDE GREEN-PLAT NO. 4-B
 SECTION 12, TOWNSHIP 43 SOUTH, RANGE 42 EAST
 PALM BEACH COUNTY, FLORIDA
 IN 3 SHEETS SHEET NO. 2
 SEPTEMBER, 1985



STATE OF FLORIDA }
 COUNTY OF PALM BEACH }
 This Plat was filed for record at _____ M.
 this _____ day of _____
 19 _____, and duly recorded in Plat Book No. _____
 on page _____
 JOHN B. DUNKLE, Clerk Circuit Court
 By _____, D.C.



8265-304
 52/21

THIS INSTRUMENT WAS PREPARED BY JOSEPH M. TUCKER IN THE OFFICES OF ROSSI AND MALAVASI ENGINEERS, INC., 1675 PALM BEACH LAKES BLVD. WEST PALM BEACH, FLORIDA 33401. PHONE: 737-6546

ROSSI AND MALAVASI ENGINEERS, INC.		A PORTION OF A P.U.D.	
WEST PALM BEACH, FLORIDA		LAKESIDE GREEN-PLAT 4-B	
		IN 3 SHEETS SHEET NO. 2	
Date	SEPTEMBER, 1985	Designed	R. ANDERSON
Approved		Drawn	C. GOSS
		Checked	
Scale	1" = 50'	Sheet	2 of 3
Job No.	3304-84	File No.	8-1304-00

DRAWING NUMBER
 52/21

DRAWING NUMBER
 NOT PLATTED

DRAWING NUMBER
 NOT PLATTED

DRAWING NUMBER
 NOT PLATTED

SEE SHEET NO. 3

SEE SHEET NO. 3