

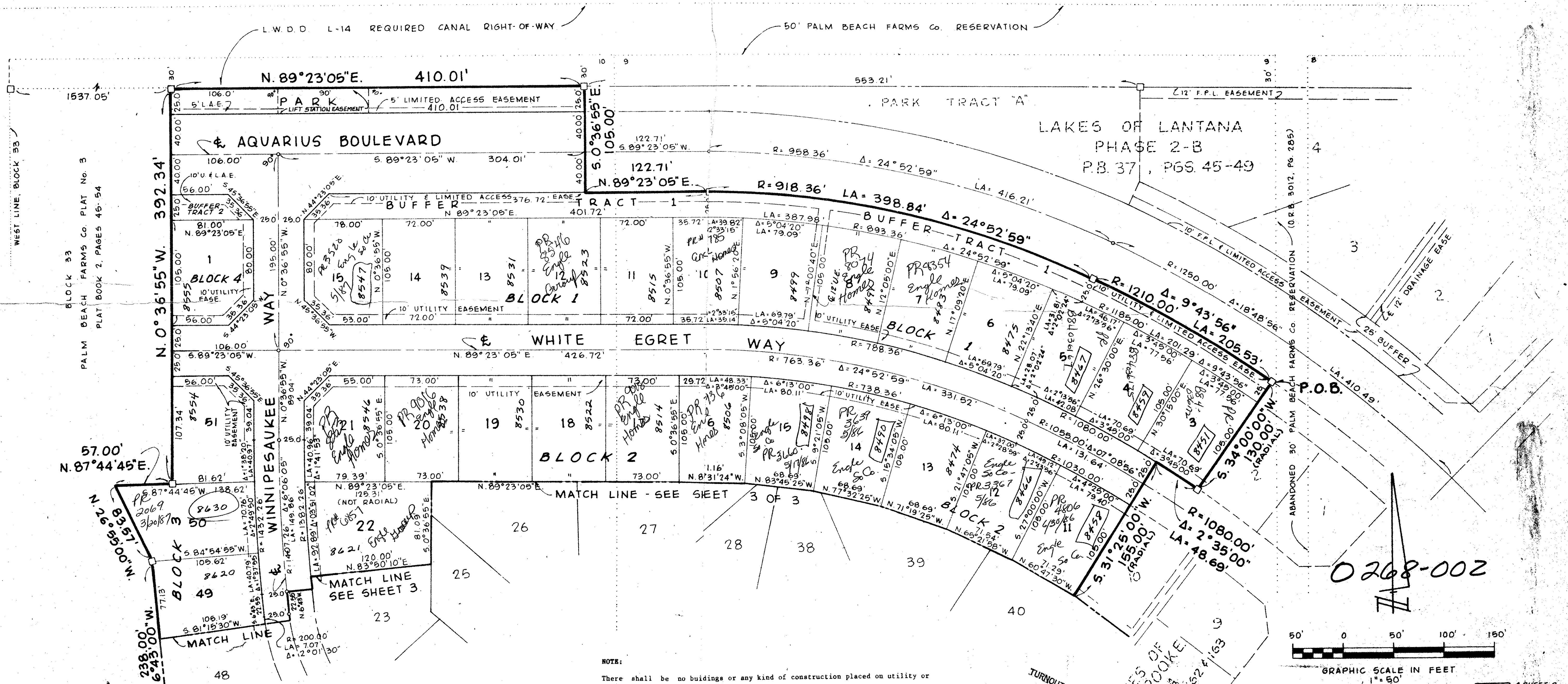
# LAKES OF SHERBROOKE PHASE 5

DRAWING NUMBER  
**52/13**

DRAWING NUMBER

DRAWING NUMBER

DRAWING NUMBER



**NOTES:**

There shall be no buildings or any kind of construction placed on utility or drainage easements.

There shall be no structures, trees or shrubs placed on drainage easements.

Approval of landscaping on utility easements other than water and sewer shall be only with the approval of all utilities occupying same.

Bearings refer to the State Road Department Right-of-Way Map of Lantana West Road, S. R. 812, Section No. 9353-151, dated January 1953, the center line thereof bearing North 88°04'24" West.

All Palm Beach Farms Co. Plat No. 3 thirty foot reservations encompassed by the Lakes of Lantana Planned Unit Development have been abandoned by Resolution No. R-79-159 and recorded in Official Record Book 3012, Pages 285-287, Public Records of Palm Beach County Florida.

All distances shown along curves are arc lengths, and lines that are drawn as radial lines are radial lines unless noted otherwise.

□ - indicates Permanent Reference Monument.

○ - indicates Permanent Control Point.

**ADAIR & BRADY, INC.**  
CONSULTING ENGINEERS  
LAND SURVEYORS

**Lakes of Sherbrooke**  
Phase 5  
Record Plat

WEST PALM BEACH

Dr. AM	F.R.	Scale	1" = 50'	SHEET	
Ch. dp	P.G.	Date	JULY, 1985	FP 1055	2 OF 3
Ap.		Job No.	3598P		

PLAT CALCULATED BY: ED HAUCK

PLAN HOLD CORPORATION • IRVINE, CALIFORNIA  
REGISTERED BY NUMBER 07249