

DRAWING NUMBER
51/172

DRAWING NUMBER

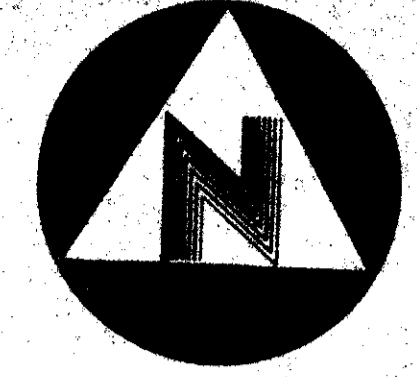
DRAWING NUMBER

DRAWING NUMBER

THIS INSTRUMENT WAS PREPARED BY W. S. VAN CAMPEN, R.L.S., IN THE OFFICES OF BENCH MARK LAND SURVEYING AND MAPPING, INC., 2833 SWEETWATER COURT, WEST PALM BEACH, FLORIDA 33409. TELEPHONE: (305) 689-2111.

172

STATE OF FLORIDA) S.S.
COUNTY OF PALM BEACH)
THIS PLAT WAS FILED FOR RECORD
AT _____ THIS _____ DAY
OF _____, A.D., AND
DULY RECORDED IN PLAT BOOK
ON PAGES _____ AND _____
JOHN B. DUNKLE
CLERK, CIRCUIT COURT
BY _____ DC



0' 100' 200'
GRAPHIC SCALE
1"=100'

51

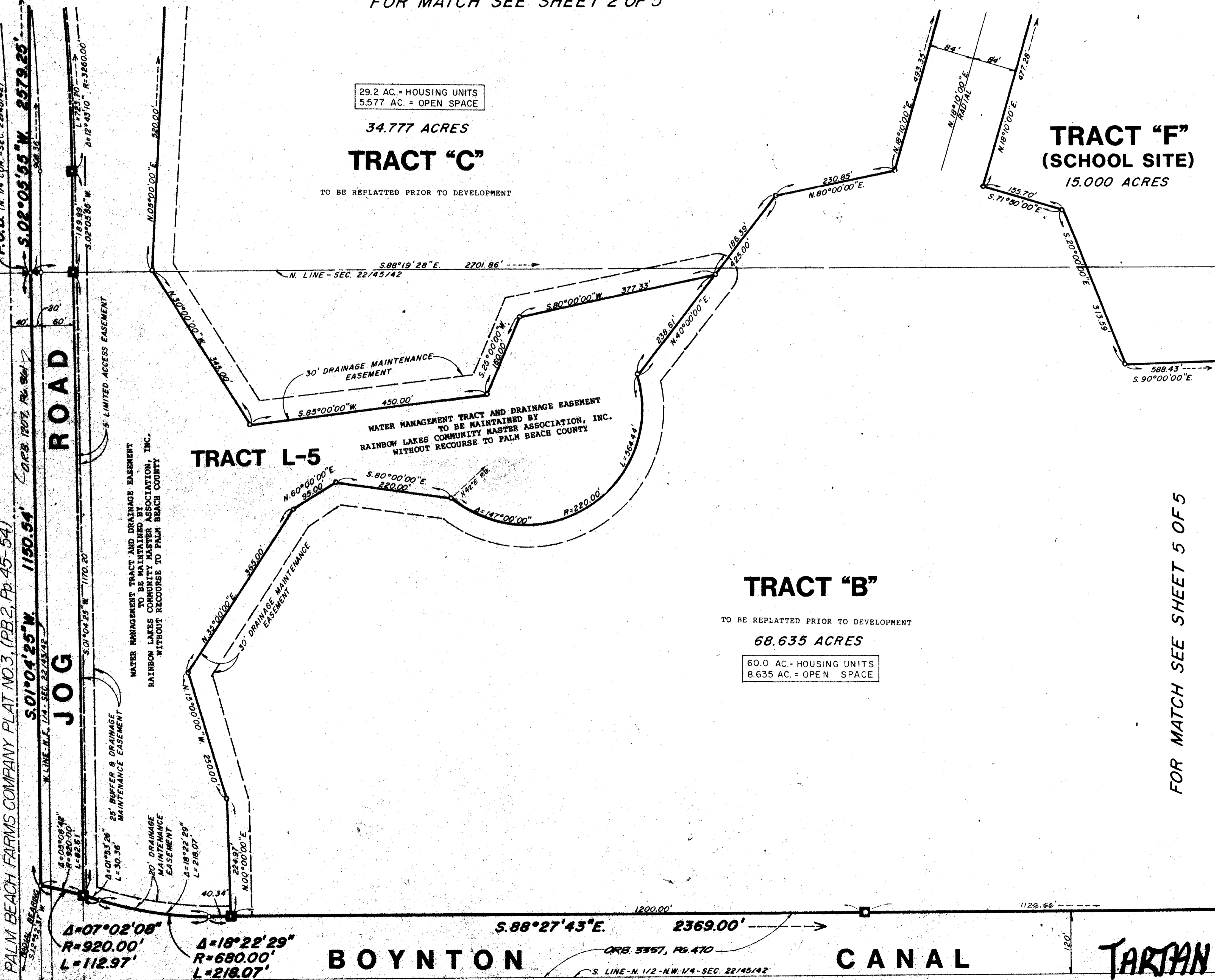
FOR MATCH SEE SHEET 2 OF 5

29.2 AC. - HOUSING UNITS
5.577 AC. - OPEN SPACE
34.777 ACRES
TRACT "C"
TO BE REPLATTED PRIOR TO DEVELOPMENT

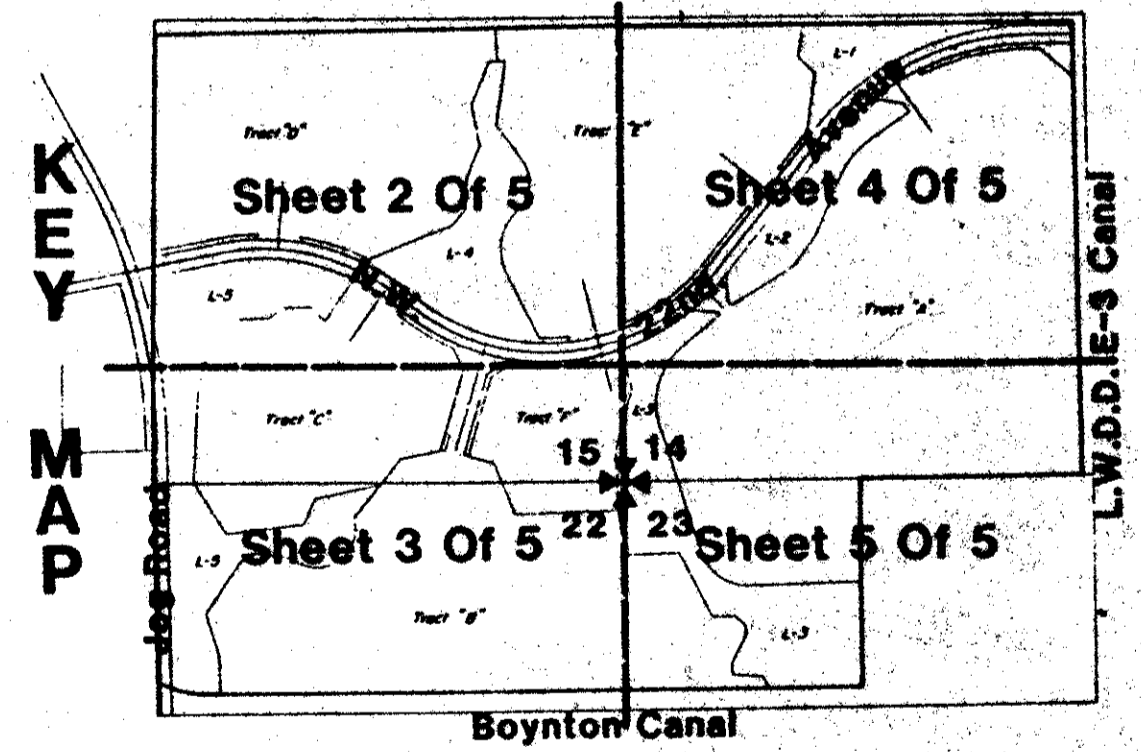
TRACT "F"
(SCHOOL SITE)
15.000 ACRES

TRACT "B"
TO BE REPLATTED PRIOR TO DEVELOPMENT
68.635 ACRES
60.0 AC. - HOUSING UNITS
8.635 AC. - OPEN SPACE

TRACT L-5



FOR MATCH SEE SHEET 5 OF 5



A PART OF TARTAN LAKES-RUD
TARTAN LAKES PLAT NO. 3 - P.U.D.
LYING IN SECTIONS 14, 15, 22 AND 23, TOWNSHIP 43 SOUTH, RANGE 42 EAST
BEING A REPLAT OF A PORTION OF BOYNTON GARDENS, ACCORDING TO THE PLAT THEREOF AS RECORDED IN PLAT BOOK 6, AT PAGE 32, OF THE PUBLIC RECORDS OF
COUNTY OF PALM BEACH, STATE OF FLORIDA
APRIL, 1985
SHEET 3 OF 5

0316-003

51/172

TARTAN LAKES #3

CONRAD W. SCHAEFER CONSULTING ENGINEERS, INC. PALM BEACH COUNTY, FLORIDA				
BENCH MARK Land surveying and mapping, inc.				
DESIGNED DC	DRAWN TAL	CHECKED MVC	JOB NO. P2505	DRAWING NO.
DATE 12-25-84	SCALE 1"=100'	APPROVED CWS	FILE NO.	SHEET OF 3 5