

DRAWING NUMBER  
**51/147**

DRAWING NUMBER

DRAWING NUMBER

DRAWING NUMBER

# GLENEAGLES PLAT THREE

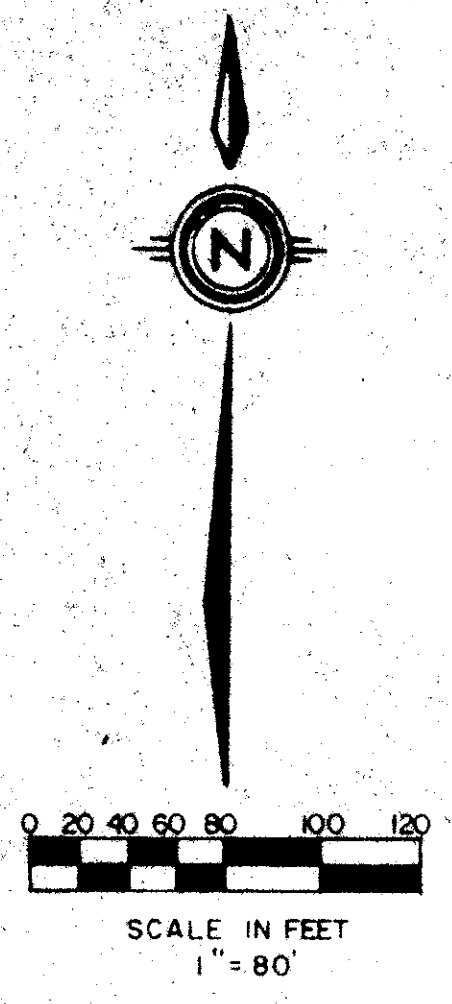
## GOLF COURSE, PART OF COVENTRY, A P.U.D.

SITUATE IN SECTION 21, TOWNSHIP 46 SOUTH, RANGE 42 EAST,  
PALM BEACH COUNTY, FLORIDA, BEING A REPLAT OF A PORTION  
OF GLENEAGLES PLAT ONE, (P.B. 50, P. 63 - 65).

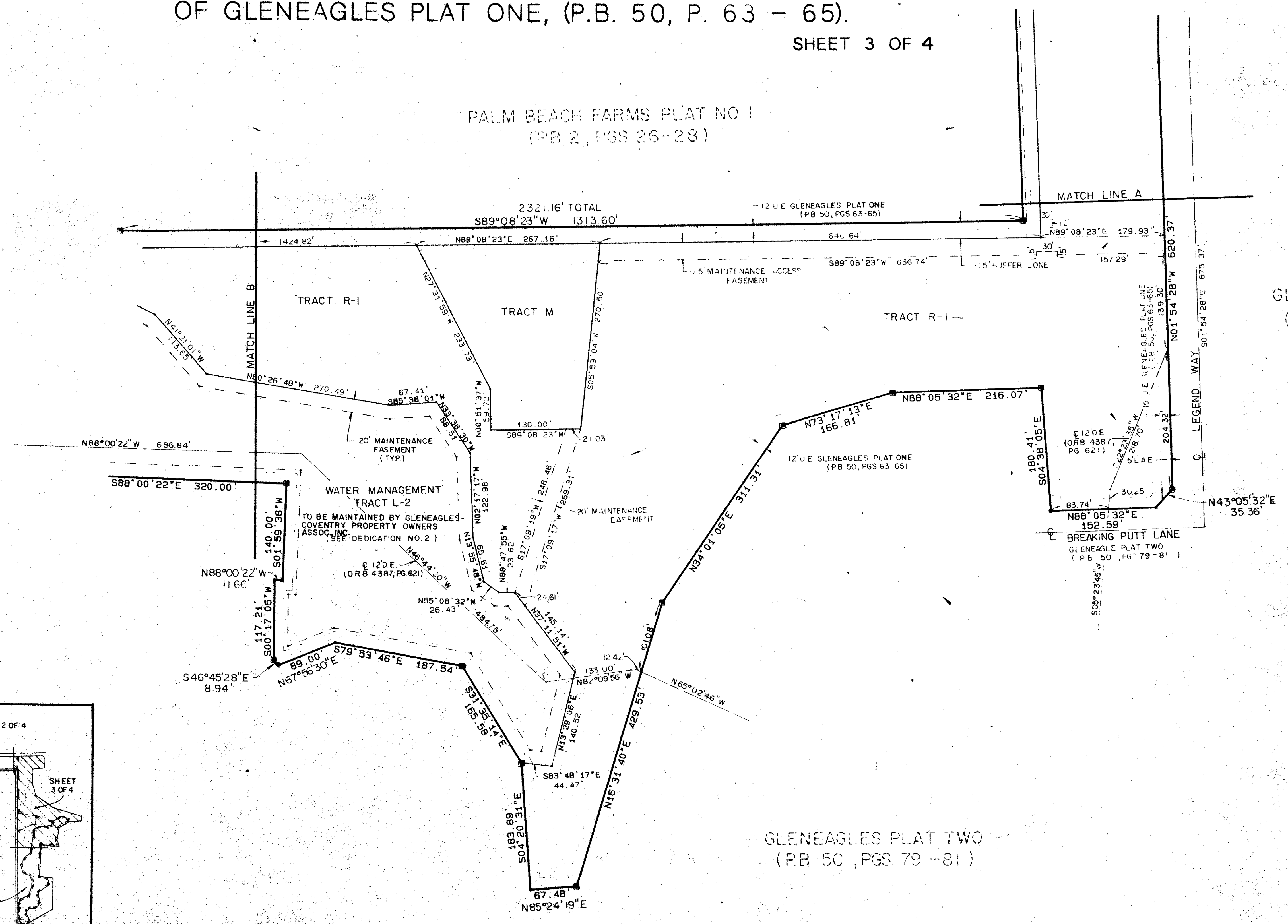
SHEET 3 OF 4

**147**

STATE OF FLORIDA  
COUNTY OF PALM BEACH  
THIS PLAT WAS FILED FOR  
RECORD AT \_\_\_\_\_  
THIS \_\_\_\_\_ DAY OF \_\_\_\_\_  
AD, 1984 AND DULY RECORDED  
IN PLAT BOOK \_\_\_\_\_ ON PAGES  
\_\_\_\_\_ AND \_\_\_\_\_  
BY: JOHN B. DUNKLE, CLERK  
D.C.

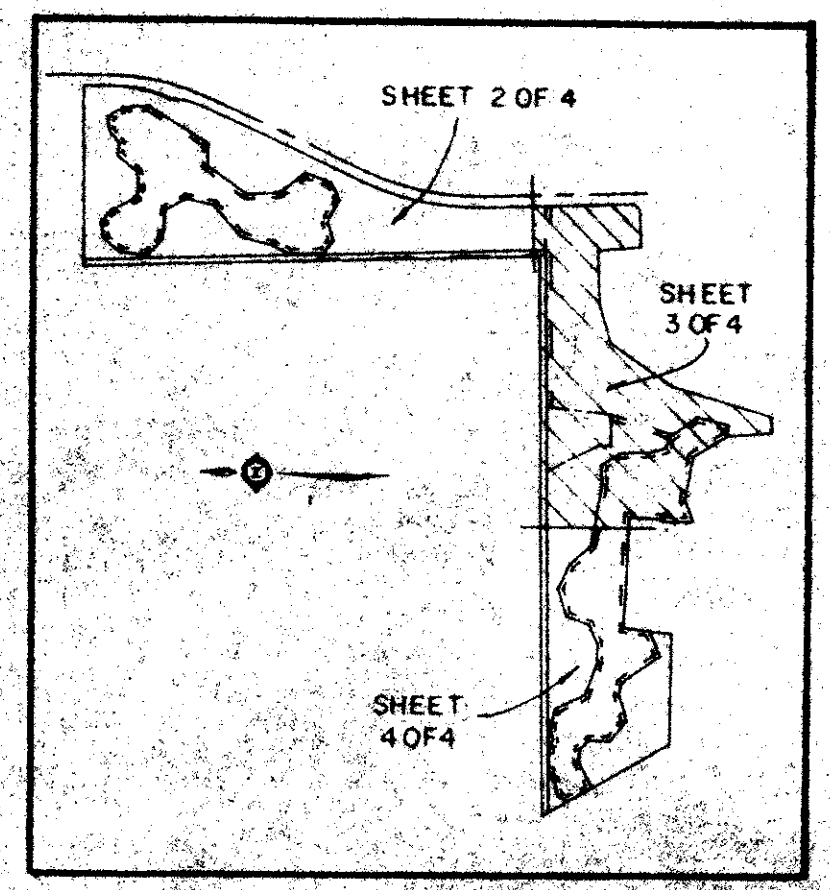


PALM BEACH FARMS PLAT NO 1  
(PB 2, PGS 26-28)



GLENEAGLES PLAT ONE  
(PB 50, PGS 63-65)

GLENEAGLES PLAT TWO  
(PB 50, PGS 79-81)



SHEET LOCATION MAP  
N.T.S.

0230-301

51/147

Meridian		WEST PALM BEACH, FLORIDA	
Surveying and mapping inc.			
DRAWN	M.E.H.	DATE	1985
CHECKED	RAH	SCALE	
DRAWING NO	64-P-115	GLENEAGLES PLAT THREE SEC 21, TWP. 46S, RGE 42E	