

DRAWING NUMBER
51/136

DRAWING NUMBER

DRAWING NUMBER

DRAWING NUMBER

PLANNED CORPORATION • IRVINE, CALIFORNIA
RECORDED BY NUMBER 07249

GLENEAGLES PLAT FOUR

GOLF AND TENNIS CLUB, PART OF COVENTRY, A P.U.D.

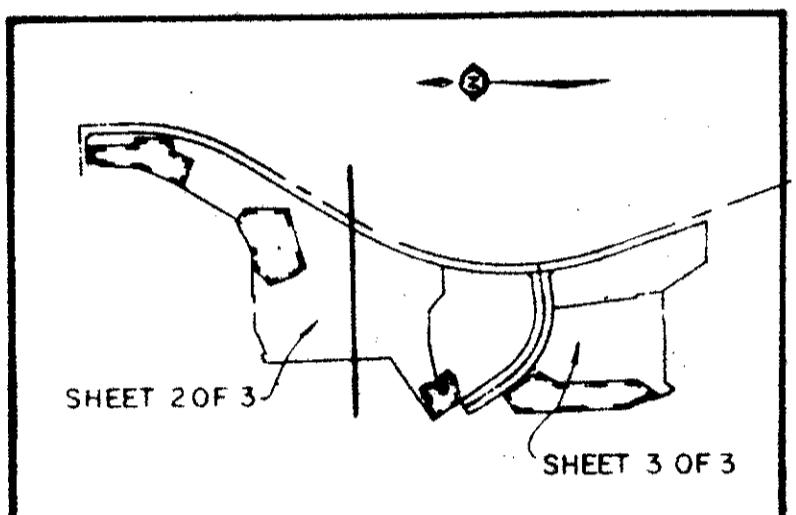
SITUATE IN SECTIONS 21 AND 28, TOWNSHIP 46 SOUTH, RANGE 42 EAST
PALM BEACH COUNTY, FLORIDA, BEING A REPLAT OF A PORTION
OF GLENEAGLES PLAT ONE, (P.B. 50, P. 63 - 65).

SHEET 2 OF 3

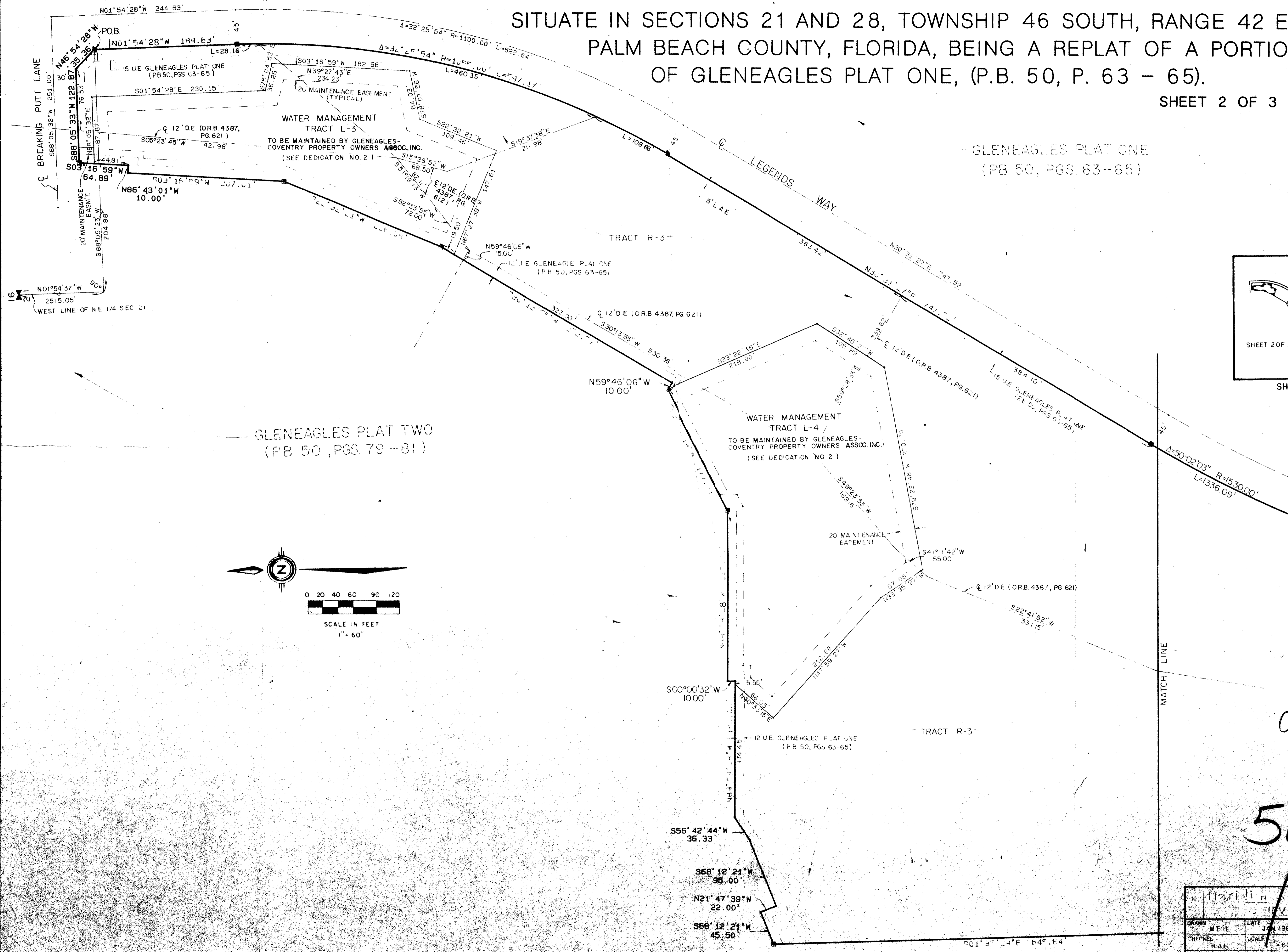
136

STATE OF FLORIDA
COUNTY OF PALM BEACH
THIS PLAT WAS FILED FOR
RECORD AT _____ DAY OF _____
A.D. 1984 AND DULY RECORDED
IN PLAT BOOK _____ ON PAGE _____
AND _____
JOHN B. DUNKLE, CLERK
BY: _____, D.C.

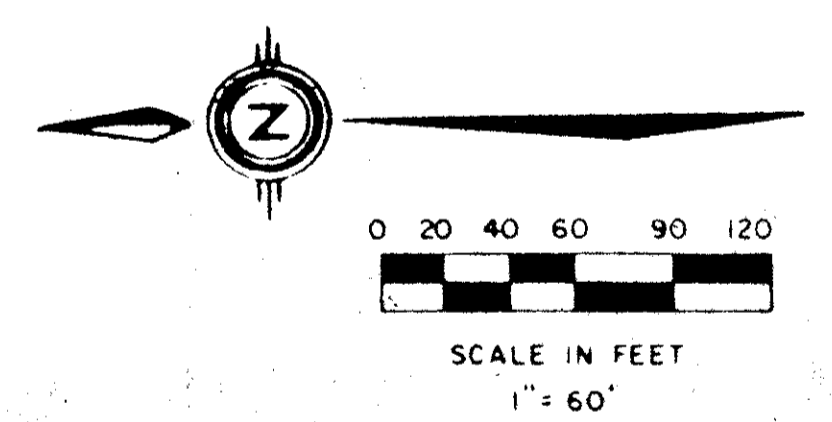
GLENEAGLES PLAT ONE
(PB 50, PGS 63-65)



SHEET LOCATION MAP
N.T.S.



GLENEAGLES PLAT TWO
(PB 50, PGS 79-81)



0230-004

51/136

DRAWN		DATE	
CHECKED		DATE	
BY		SCALE	
DRAWING NO.		SHEET NO.	
WEST PALM BEACH, FLORIDA			
GLENEAGLES PLAT FOUR			
SEC 21 & 28, TWP 46 S, RGE 42 E			

GLENEAGLES PLAT ONE (PB 50, PGS 63-65)