

51/109

DRAWING NUMBER

DRAWING NUMBER

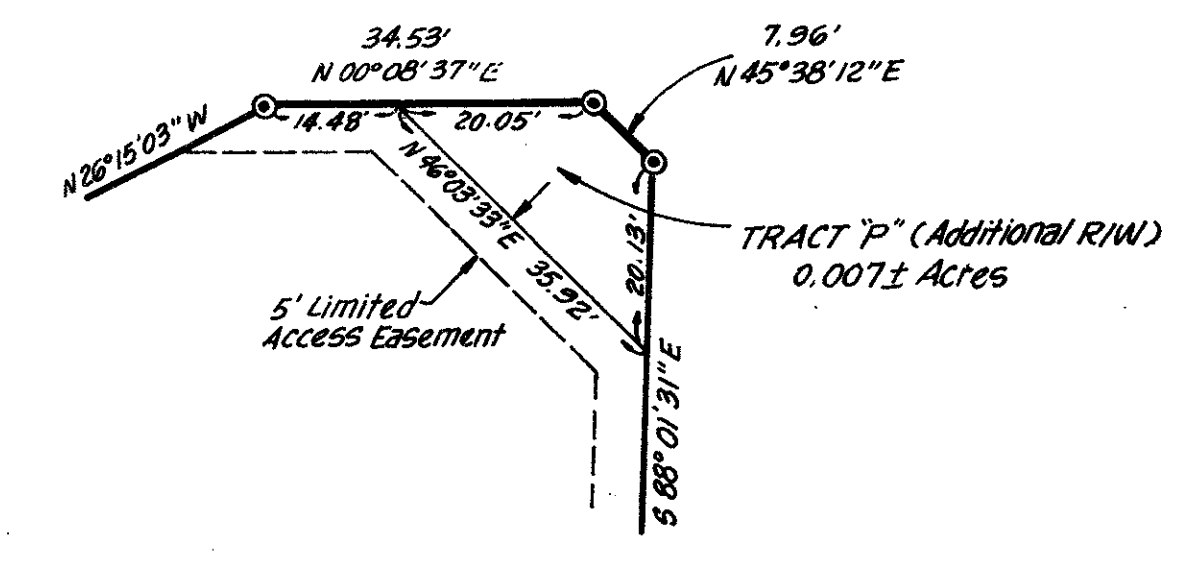
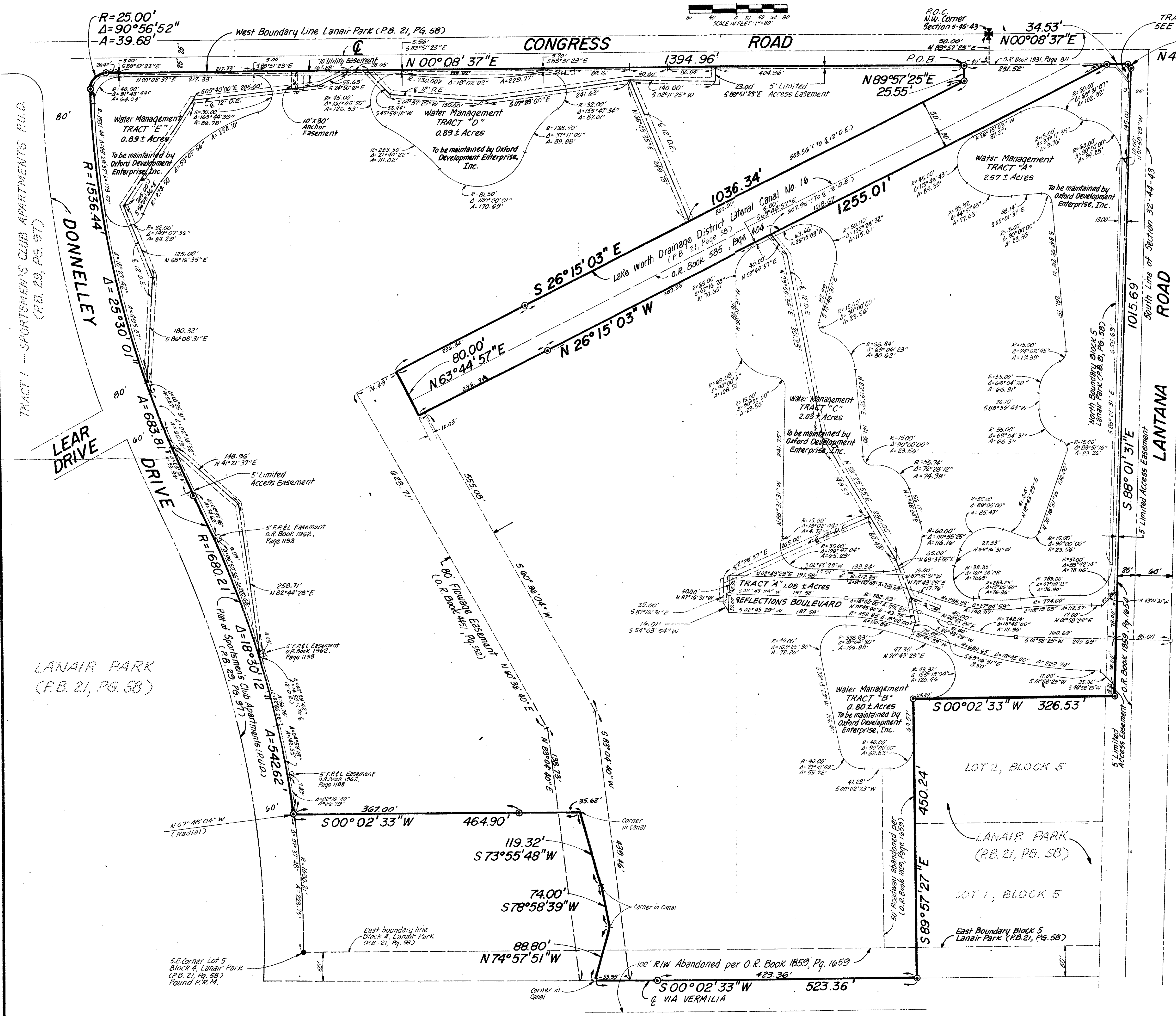
DRAWING NUMBER

REFLECTIONS, NORTH 1/2 OF CLOISTERS, A PART OF SPORTSMEN'S CLUB P.U.D.

A REPLAT OF A PORTION OF LANAIR PARK, AS RECORDED IN PLAT BOOK 21 AT PAGE 58, PALM BEACH COUNTY, FLORIDA LYING IN HIATUS LOT 5, TOWNSHIP 44 1/2 SOUTH, RANGE 43 EAST AND SECTION 5, TOWNSHIP 45 SOUTH, RANGE 43 EAST; TOGETHER WITH A PORTION OF HIATUS LOT 5, TOWNSHIP 44 1/2 SOUTH, RANGE 43 EAST, PALM BEACH COUNTY, FLORIDA

SHEET 2 OF 2

109



TRACT "P" DETAIL
Scale: 1" = 20'

SURVEYOR'S NOTES :

- 1) Denotes Permanent Reference Monument (P.R.M.)
- 2) Denotes 12' Drainage Easement.
- 3) Bearings shown hereon are based on the D.O.T. Right-of-Way map of State Road No. 812 Section 93530-2605, for the South R/W Line of Lantana Road - 5 88° 01' 31" E.
- 4) Denotes Permanent Control Point (P.C.P.)
- 5) No buildings or any kind of construction shall be placed on utility or drainage easements.
- 6) No structure, trees or shrubs shall be placed on drainage easements.
- 7) Approval of landscaping on utility easements other than water and sewer, shall be only with the approval of all utilities occupying same.

0311-302
REFLECTIONS NORTH.
 51/109

THIS INSTRUMENT PREPARED BY ISHMAEL S. MOHAMED, P.L.S. 2464
C.C.L. CONSULTANTS, INC.
 ENGINEERS, SURVEYORS & PLANNERS
 440 EAST SAMPLE ROAD, SUITE 104 - POMPANO BEACH, FLORIDA - 33064-786-1901
 DATED: DECEMBER, 1984 DRAWN BY: L.L.L.