

DRAWING NUMBER
51/13

DRAWING NUMBER

DRAWING NUMBER

DRAWING NUMBER

PROMENADE AT BOCA POINTE NO. 3

PART OF BOCA POINTE, A P.U.D.

BEING A REPLAT OF A PORTION OF TRACT Q OF BOCA POINTE NO. 1,
A P.U.D., SITUATE IN SECTION 33, TOWNSHIP 47 SOUTH, RANGE 42 EAST,
PALM BEACH COUNTY, FLORIDA.

MARCH, 1985

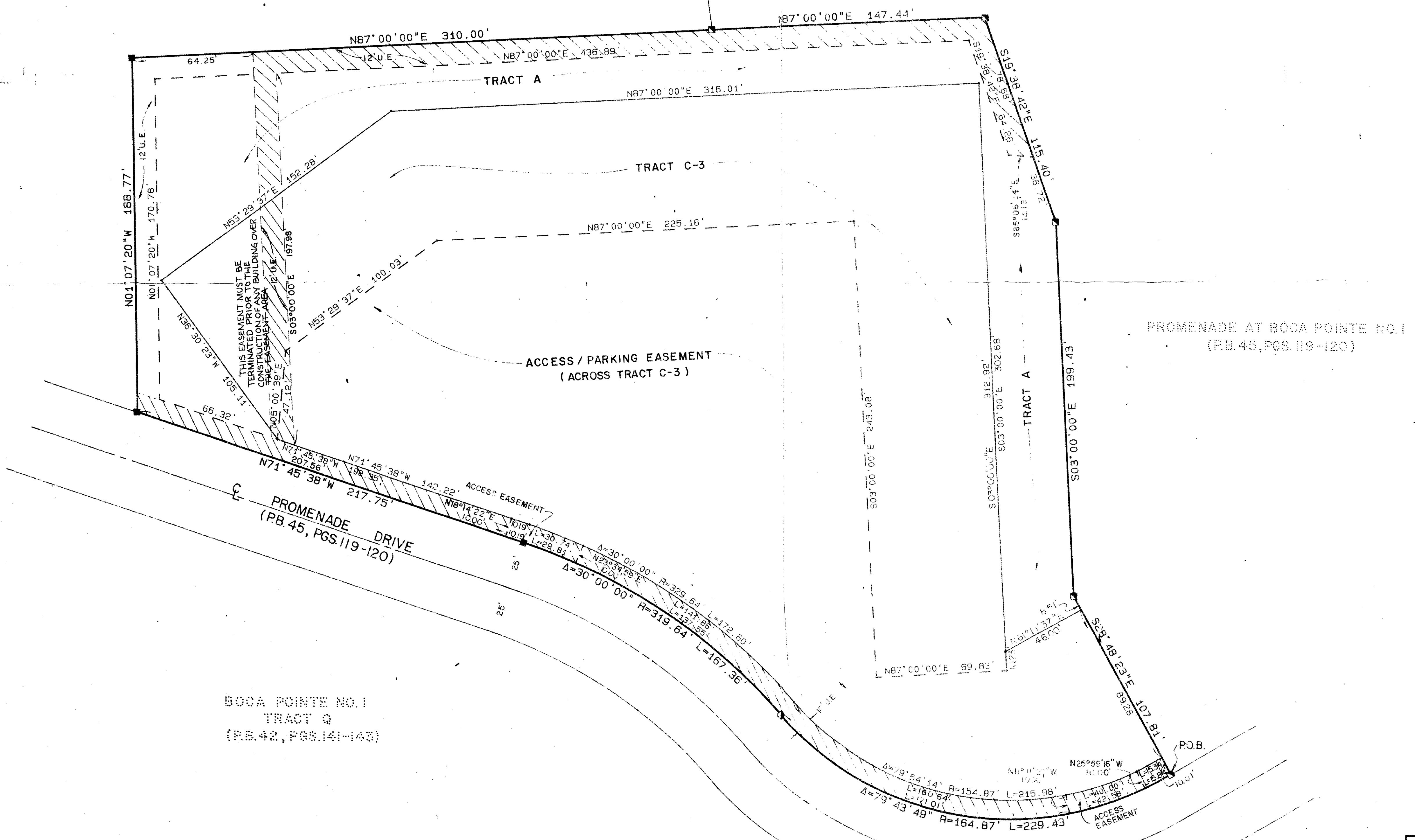
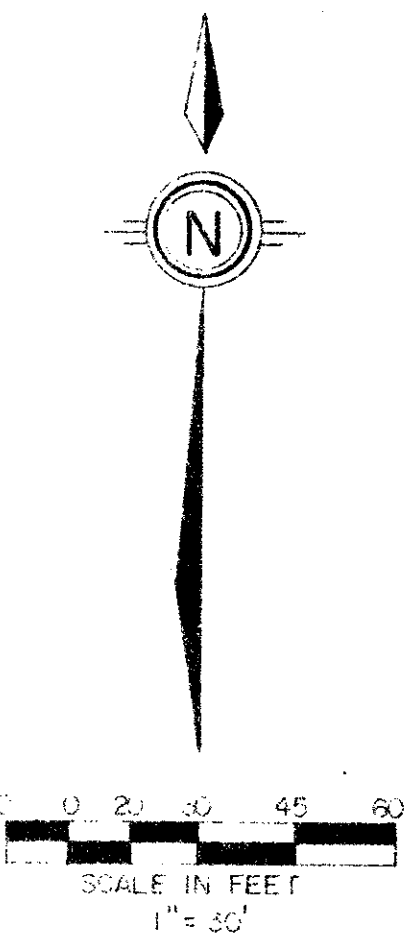
SHEET 2 OF 2.

54

13

STATE OF FLORIDA
COUNTY OF PALM BEACH
THIS PLAT WAS FILED FOR
RECORD AT _____
THIS _____ DAY OF _____
AD, 1985 AND DULY RECORDED
IN PLAT BOOK _____ ON PAGES
_____ AND _____
JOHN B. DUNKLE, CLERK
BY: _____, D.C.

BOCA POINTE NO. 1
TRACT Q
(P.B. 42, PGS. 141-143)



BOCA POINTE NO. 1
TRACT Q
(P.B. 42, PGS. 141-143)

UTILITY EASEMENT PER O.R.B. 4087, PGS. 581-584
THIS IS NOT A PUBLIC EASEMENT.

PROMENADE AT BOCA POINTE NO. 1
(P.B. 45, PGS. 119-120)

0211-321

51/13

Meridian		WEST PALM BEACH, FLORIDA	
Surveying and mapping, inc.			
DRAWN	MHC	DATE	NOV. 1985
CHECKED	MHC	SCALE	1" = 30'
DRAWING NO.	81-P-077	PROMENADE AT BOCA POINTE NO. 3	