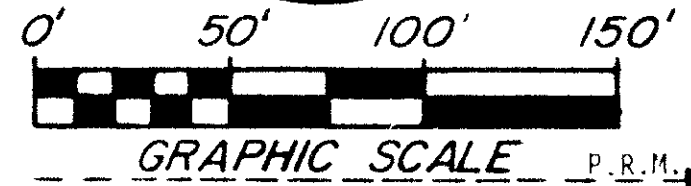


50/185

DRAWING NUMBER

DRAWING NUMBER

DRAWING NUMBER



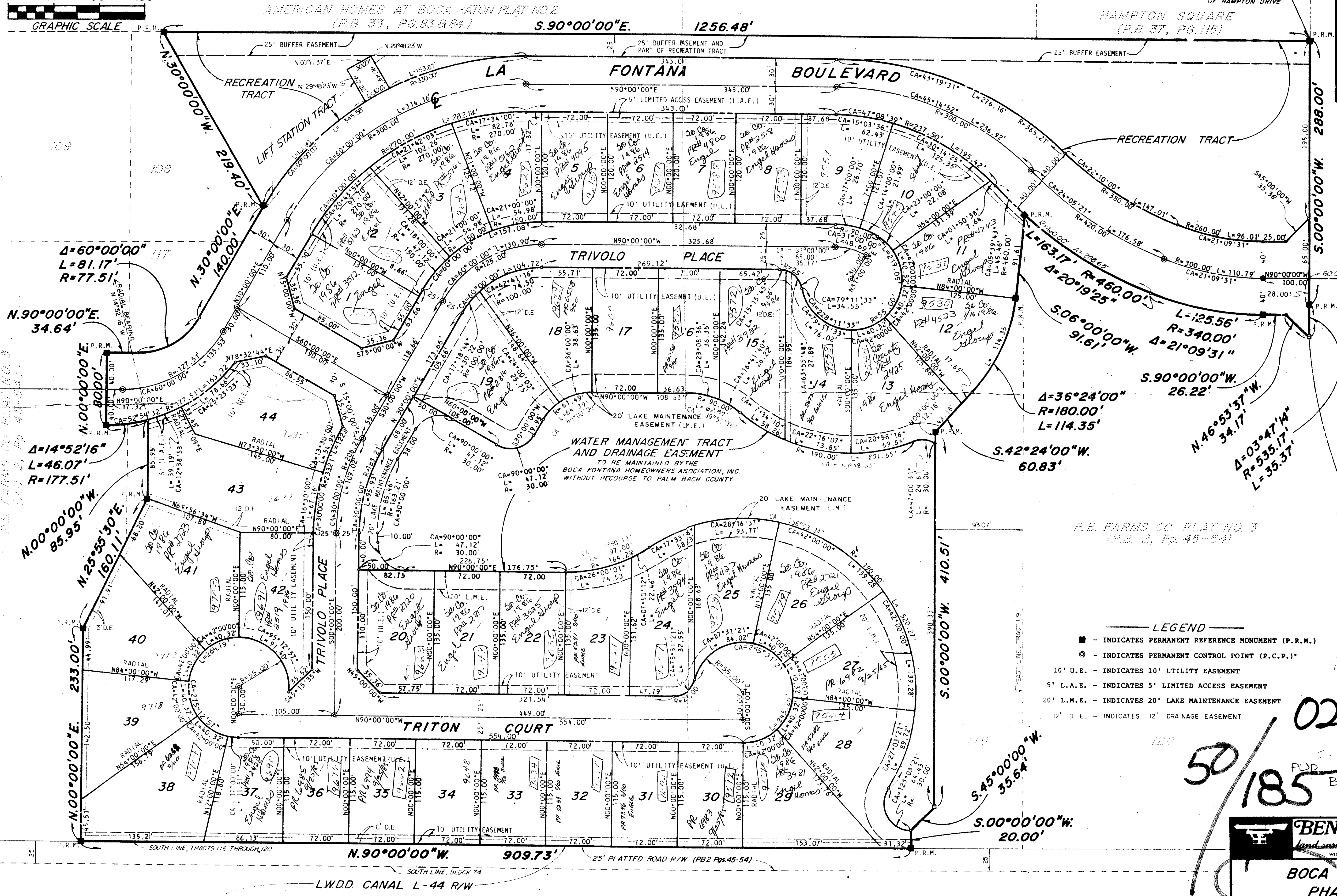
BOCA FONTANA PHASE 2A

IN SECTION 7, TOWNSHIP 47 SOUTH, RANGE 42 EAST
BEING A REPLAT OF A PORTION OF BLOCK 74, PALM BEACH FARMS COMPANY PLAT NO. 3, P.B. 2, Pp. 45-54
JANUARY 1985
PUBLIC RECORDS, PALM BEACH COUNTY, FLORIDA.

185

P.O.B.
NORTHWEST CORNER
OF HAMPTON DRIVE

STATE OF FLORIDA)
COUNTY OF PALM BEACH) S.S.
THIS PLAT WAS FILED FOR RECORD
AT _____ DAY
OF _____, A.D., AND
DULY RECORDED IN PLAT BOOK
ON PAGES _____ AND
JOHN B. DUNKLE
CLERK, CIRCUIT COURT
BY _____ DC



P.B. FARMS CO. PLAT NO. 3
(P.B. 2, Pp. 45-54)

- LEGEND**
- - INDICATES PERMANENT REFERENCE MONUMENT (P.R.M.)
 - ⊙ - INDICATES PERMANENT CONTROL POINT (P.C.P.)
 - 10' U.E. - INDICATES 10' UTILITY EASEMENT
 - 5' L.A.E. - INDICATES 5' LIMITED ACCESS EASEMENT
 - 20' L.M.E. - INDICATES 20' LAKE MAINTENANCE EASEMENT
 - 12' D.E. - INDICATES 12' DRAINAGE EASEMENT

BENCH MARK
land surveying and mapping, inc.
WEST PALM BEACH, FLORIDA

**BOCA FONTANA
PHASE 2A**

OWN	TAL	CKD	TLO	DATE	JAN 1985	NO.	P6900
SCALE	1" = 50'	SIZE		SHEET	2 OF 2		

50/185
0218-006
PUD
BENTWOOD
RT