

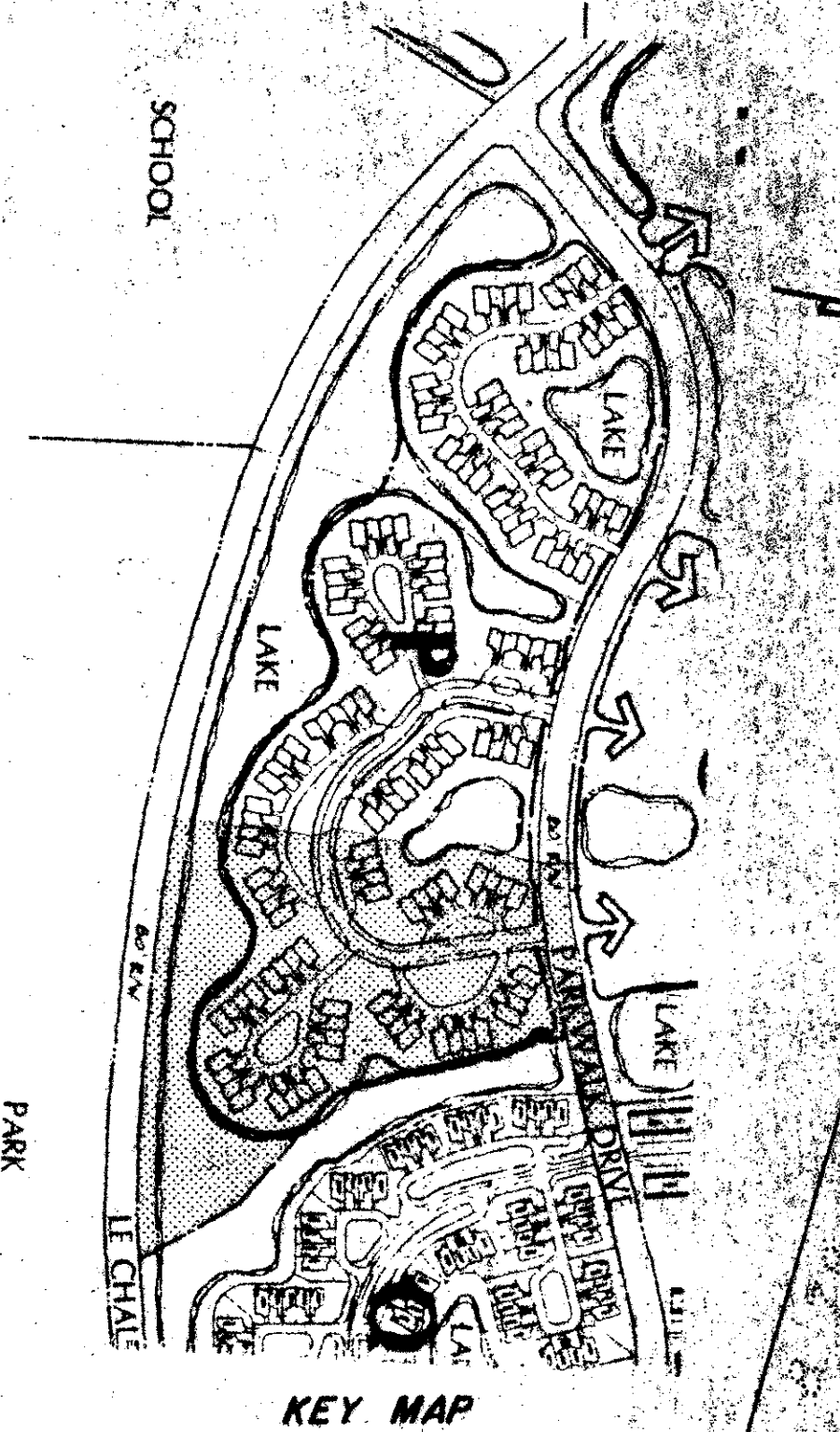
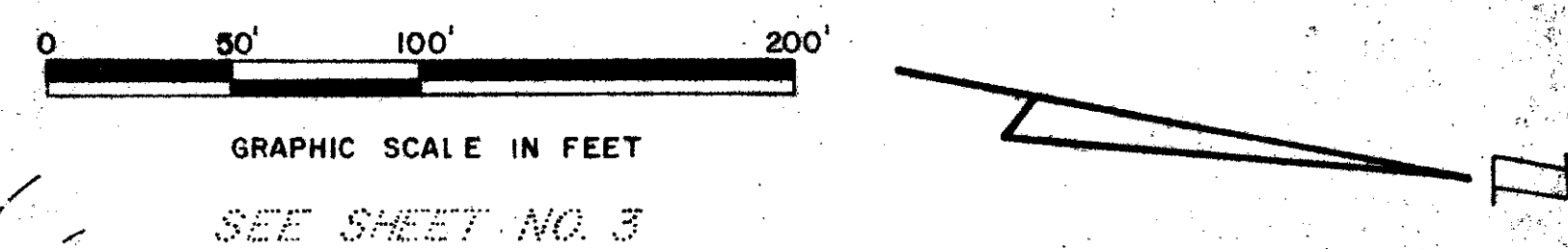
DRAWING NUMBER
50/159

PARKWALK - PLAT NO. 4

A PORTION OF A (P.U.D.)
SECTION 14 & 15, TOWNSHIP 45 SOUTH, RANGE 42 EAST
PALM BEACH COUNTY, FLORIDA - MAY, 1984

50/159

STATE OF FLORIDA
COUNTY OF PALM BEACH } ss
This Plat was filed for record at _____ M.
this _____ day of _____
19 _____, and duly recorded in Plat Book No. _____
on page _____
JOHN B. DUNKLE, Clerk Circuit Court
By _____, D.C.



DRAWING NUMBER

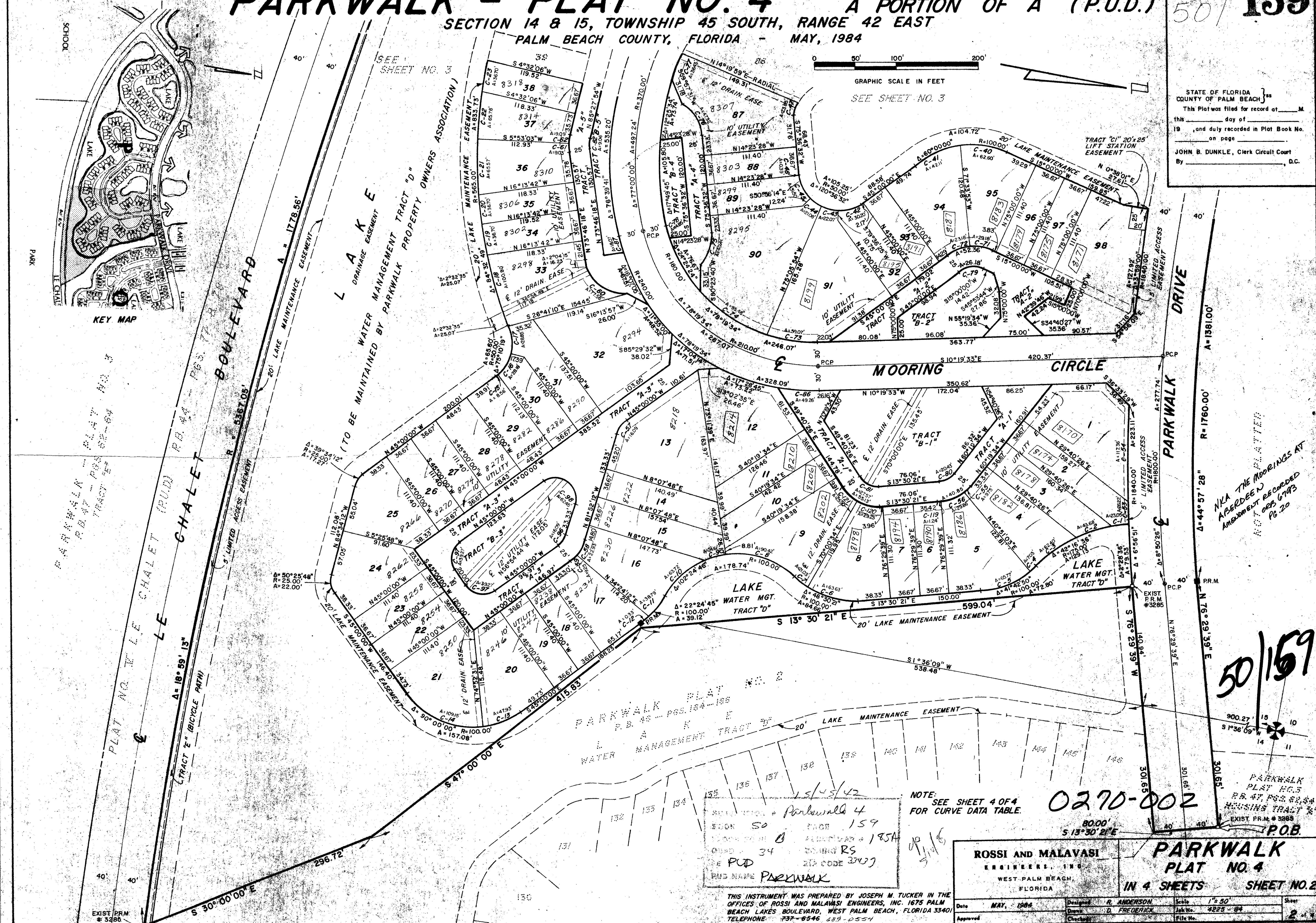
DRAWING NUMBER

DRAWING NUMBER

PLAN HOLD CORPORATION • IRVINE, CALIFORNIA
REORDER BY NUMBER 0734R

PLAN HOLD CORPORATION • IRVINE, CALIFORNIA
REORDER BY NUMBER 0734R

PLAN HOLD CORPORATION • IRVINE, CALIFORNIA
REORDER BY NUMBER 0734R



NKA THE MOORINGS AT
ABERDEEN
AMENDMENT RECORDED
PG. 20

15/45/42
PARKWALK 4
BOOK 50 PAGE 159
SUBDIVISION 0
PUD
PUD CODE 3700

NOTE: SEE SHEET 4 OF 4 FOR CURVE DATA TABLE.

0270-002

ROSSI AND MALAVASI
ENGINEERS, INC.
WEST PALM BEACH,
FLORIDA

**PARKWALK
PLAT NO. 4**
IN 4 SHEETS SHEET NO. 2

THIS INSTRUMENT WAS PREPARED BY JOSEPH M. TUCKER IN THE OFFICES OF ROSSI AND MALAVASI ENGINEERS, INC. 1675 PALM BEACH LAKES BOULEVARD, WEST PALM BEACH, FLORIDA 33401. TELEPHONE 737-8546 289-0554

Date	MAY, 1984	Designed	R. ANDERSON	Scale	1" = 50'	Sheet	2 of 4
Approved		Drawn	D. FREDERICK	Job No.	4225-84		
		Checked		File No.			

50/159

PARKWALK
PLAT NO. 3
PP. 47, 48, 49, 50, 51
HOUSING TRACT # 1
EXIST. P.R.M. # 3285
P.O.B.