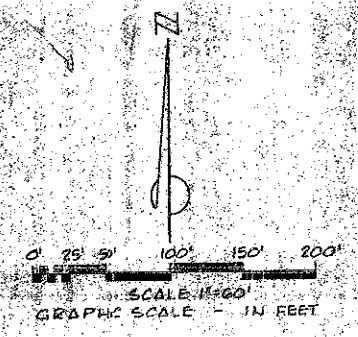


50/135

PLAT OF NASSAU SQUARE



MEEDE RACQUET CLUB No. 3
(P.B. 33 Pgs. 47-48)

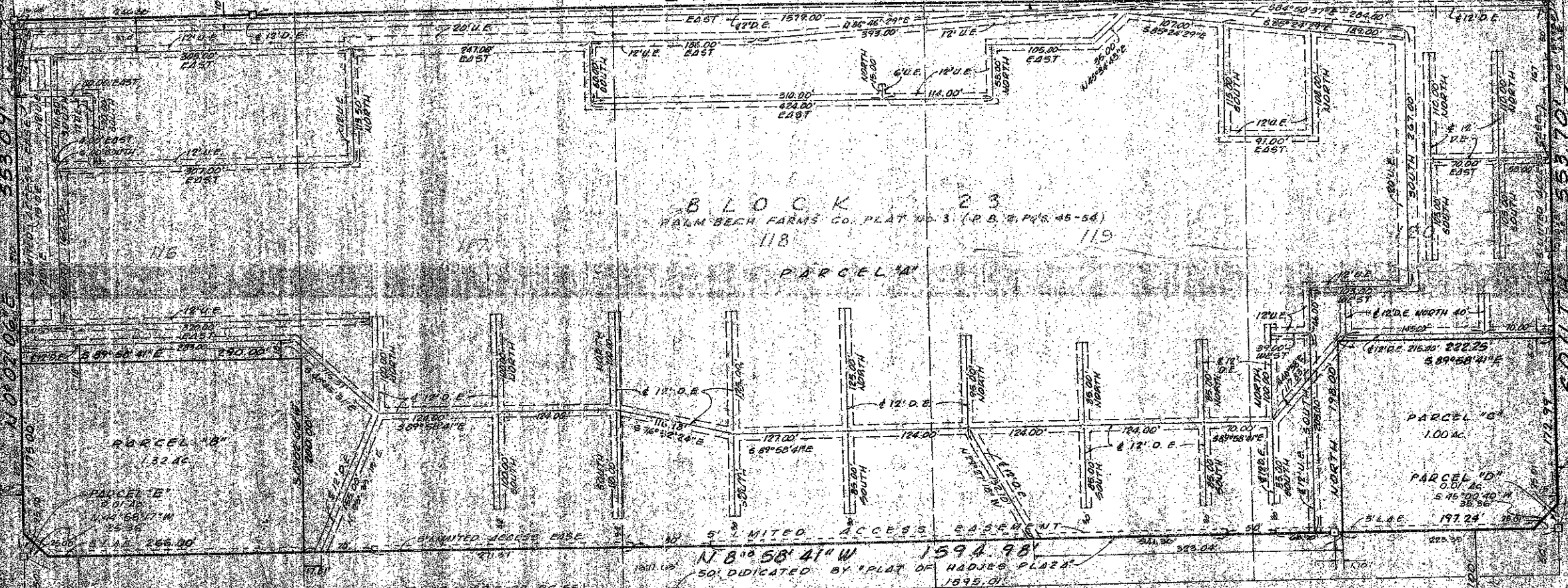
MEEDE RACQUET CLUB No. 2
(P.B. 32 Pgs. 151-152)

EAST 1594.64'

BLOCK 23
PALM BEACH FARMS CO. PLAT No. 3 (P.B. 8 Pgs. 45-54)
118

HAUGES BOULEVARD
N 0102 06 E
553 091

NASSAU ROAD
S 0102 06 W
553 701



PARCEL 1A
152.46

PARCEL 1B
144' 60" 47' W
55' 36"

PARCEL 1C
144' 60" 47' W
55' 36"

PARCEL 1D
1.00 AC

PARCEL 1D
545' 00" 40' W
38' 56"

BLK E
197.24

LAKE WORTH ROAD (S.R. 802)

1000-038

50/135

CURVE RADIUS	100'	PAGE	13
BOOK	5	FLOOR MAP	1779A
BLOCK ZONE	B	OWNER	
CHUCK #	112	ZIP CODE	33407
SE			
REVISION			

ADAIR & BRADY, INC. CONSULTING ENGINEERS & LAND SURVEYORS		RECORD PLAT	
DATE	P.B.	SCALE	SHEET
08/11/12	33	1/4" = 1'	2
BY	PC	DATE	EP 1356
AC		DATE	01/12