

50/81

50/81

GLENEAGLES PLAT TWO PARCELS B AND C OF COVENTRY A P.U.D.

SITUATE IN SECTION 21, TOWNSHIP 46 SOUTH, RANGE 42 EAST,
PALM BEACH COUNTY, FLORIDA, BEING A REPLAT OF A PORTION
OF GLENEAGLES PLAT ONE, (P.B. 50, PAGES 63-65).
SHEET 3 OF 3

STATE OF FLORIDA
COUNTY OF PALM BEACH
THIS PLAT WAS FILED FOR
RECORD AT
THIS DAY OF
AD, 1984 AND DULY RECORDED
IN PLAT BOOK ON PAGES
AND
JOHN B. DUNKLE, CLERK
CIRCUIT COURT
BY: _____, D.C.

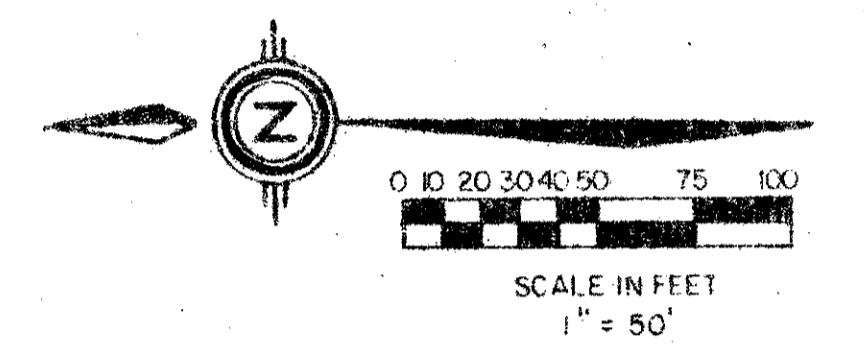
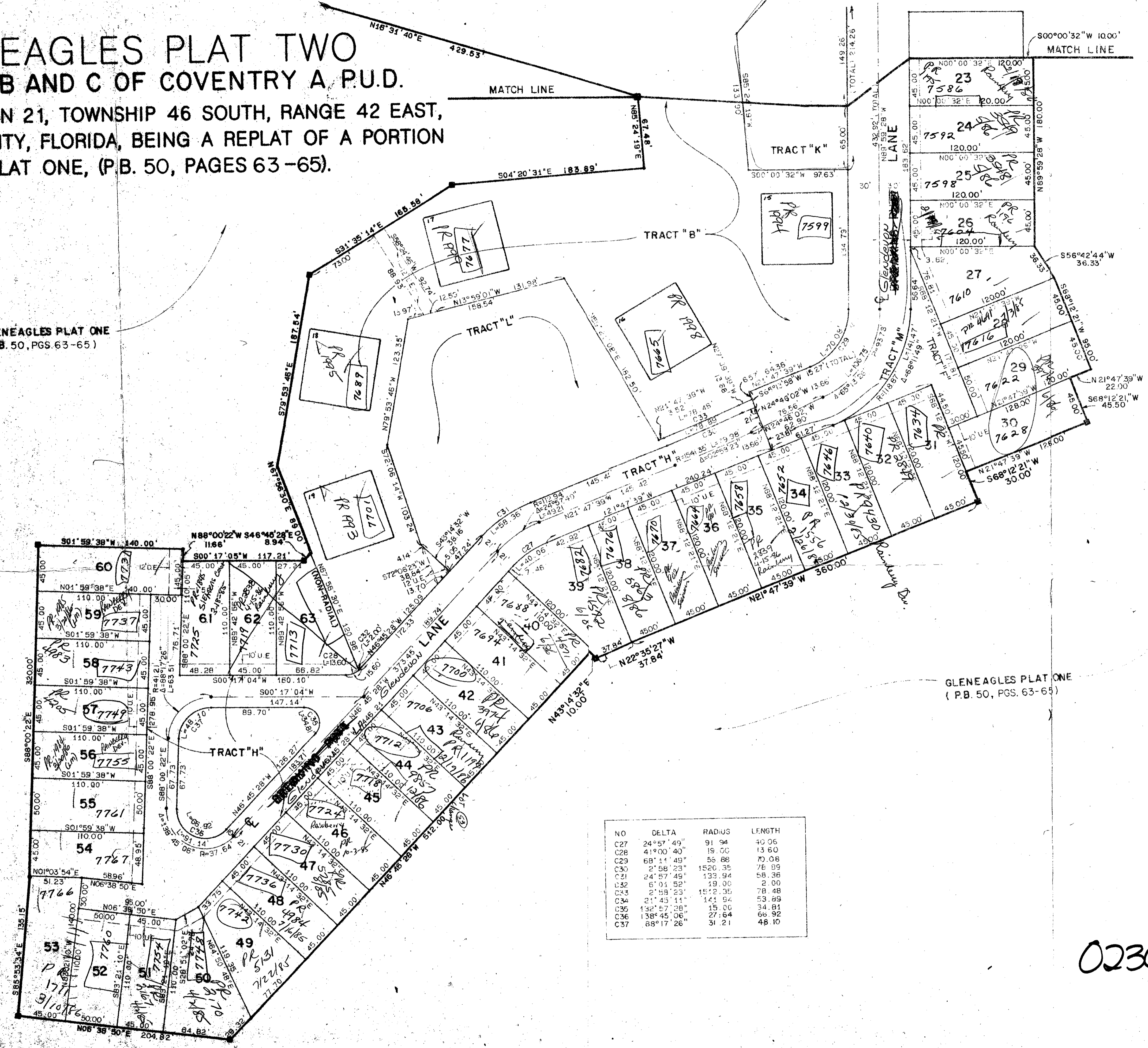
DRAWING NUMBER

DRAWING NUMBER

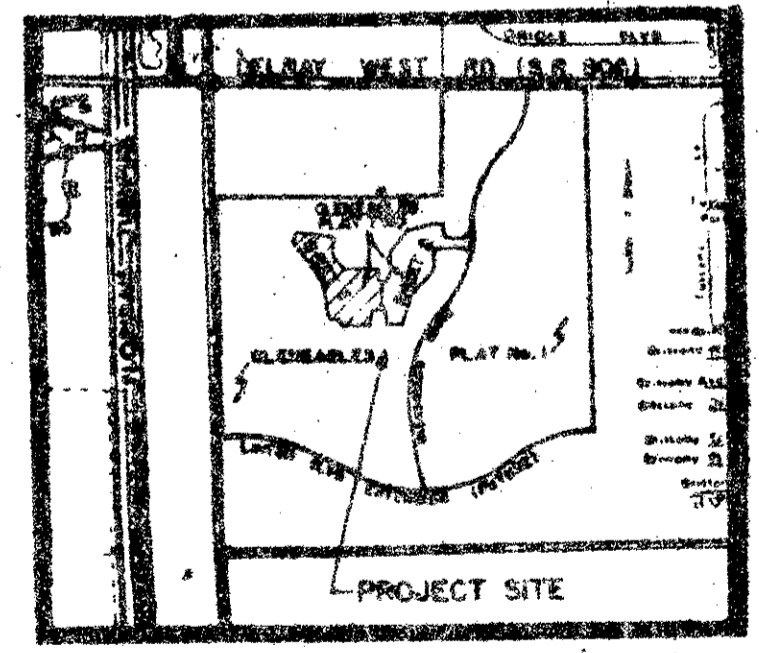
DRAWING NUMBER

GLENEAGLES PLAT ONE
(P.B. 50, PGS. 63-65)

GLENEAGLES PLAT ONE
(P.B. 50, PGS. 63-65)



p. 21/46/42
SUBDIVISION = *Meridian*
BOOK 50 PAGE 81
FLOOD ZONE B FLOOD MAP # 01A
QUAD # 22 ZONING RT
PUD ZIP CODE 33416
PUD NAME COVENTRY



SHEET LOCATION

| NO | DELTA | RADIUS | LENGTH |
|-----|------------|---------|--------|
| C27 | 24°57'49" | 91.94 | 40.06 |
| C28 | 41°00'40" | 19.00 | 13.60 |
| C29 | 68°11'49" | 55.88 | 70.08 |
| C30 | 2°58'23" | 1520.35 | 78.99 |
| C31 | 24°57'49" | 133.94 | 58.36 |
| C32 | 6°01'52" | 19.00 | 2.00 |
| C33 | 2°58'23" | 1520.35 | 78.48 |
| C34 | 21°45'11" | 144.54 | 53.89 |
| C35 | 138°57'28" | 15.00 | 34.81 |
| C36 | 138°45'06" | 27.64 | 66.92 |
| C37 | 68°17'26" | 31.21 | 48.10 |

0230-300

50/81

Meridian
Surveying and mapping inc.
WEST PALM BEACH, FLORIDA
DRAWN M.E.H. DATE JUNE, 1984
CHECKED SCALE 1"=50'
DRAWING NO. 84-P-035
GLENEAGLES PLAT TWO