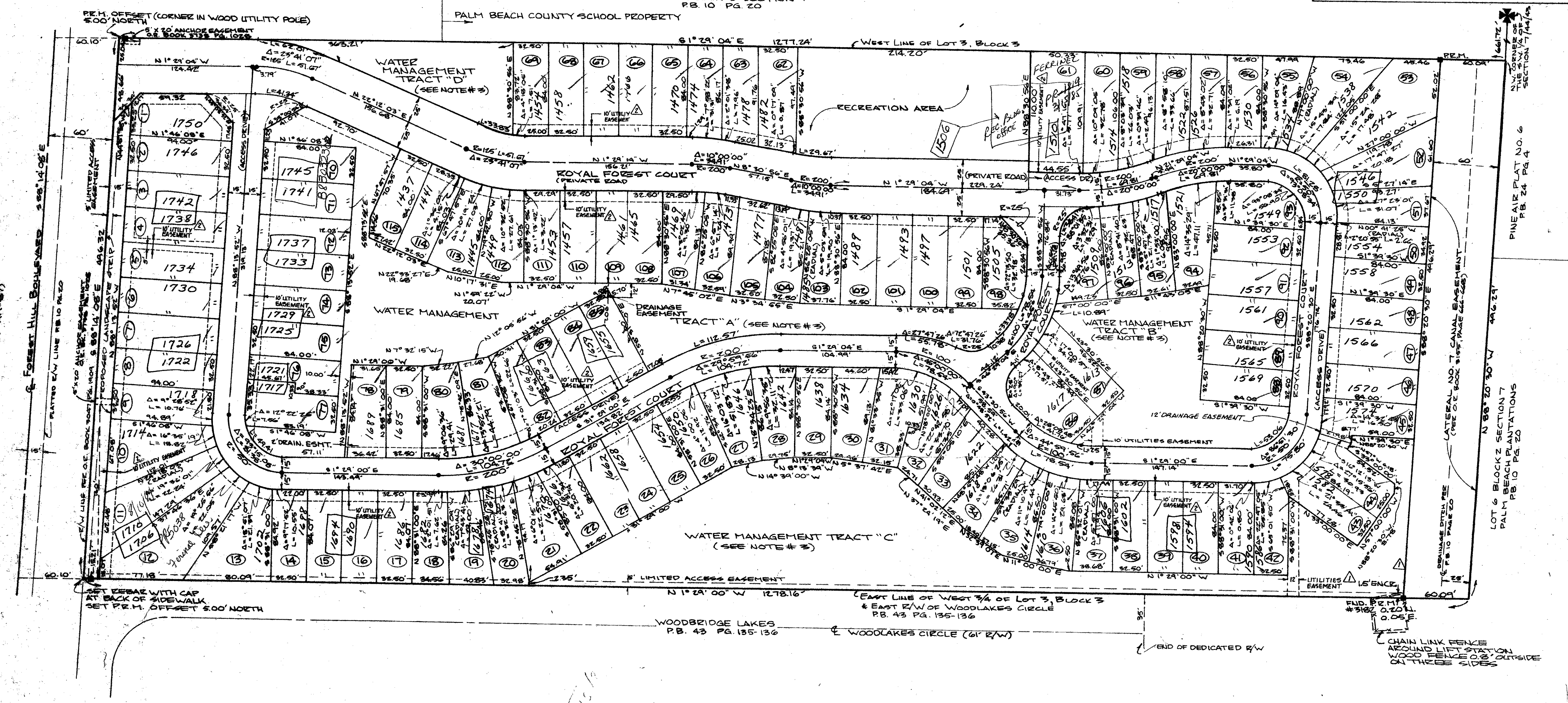
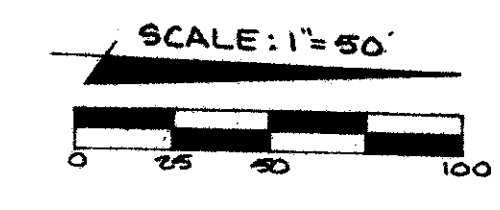


DRAWING NUMBER
50/71

50/71

A REPLAT OF ROYAL FOREST TOWNHOUSES

PLAT BOOK 49 PAGES 24-25 PALM BEACH COUNTY, FLORIDA
OCTOBER 1984 SECTION 7, TOWNSHIP 44 SOUTH, RANGE 43 EAST SHEET 2 OF 2



- SURVEYOR'S NOTES**
- Denotes Permanent Reference Monument.
 - Denotes Permanent Control Point.
 - Tracts "A", "B", "C", and "D" are water management tracts for on-site water retention and are to be maintained by the Royal Forest Homeowners' Association, Inc.
 - No buildings or any kind of construction shall be placed on utilities easements.
 - No structures, trees, or shrubs shall be placed on drainage easements.
 - Approval of landscaping on utility easements other than water or sewer shall be only with the approval of all utilities occupying same.
 - Maintenance of the landscape strip along Forest Hill Boulevard shall be the responsibility of Royal Forest Homeowners' Association, Inc., without recourse to Palm Beach County.
 - Building setbacks lines shall be required per ordinances of the City of Palm Beach.
 - Bearings as shown are based on an assumed bearing of S 88° 14' 42" E along the centerline of Forest Hill Boulevard.
 - Where drainage and utility easements cross, drainage easements shall take precedent.

1000-035 *4/21/85*
7/44/43
SOUTH BEACH FOREST
BLOCK 50 PAGE 71
FLOOR PLANS B
CROSS 17
65 N/A
AND MAKE N/A
1659
RM
33406

ROYAL FOREST TOWNHOUSES
50/71

DRAWING NUMBER

DRAWING NUMBER

DRAWING NUMBER

REVISION	DATE	BY	APPROVED BY

NOT VALID FOR CONSTRUCTION UNLESS SIGNED IN THIS BLOCK

Timothy J. Messler, Inc.
CONSULTING ENGINEERS
2560 FCA Boulevard Palm Beach Gardens, Florida 33410

PREPARED FOR
FERRINEL CORPORATION
9650 SOUTH A-1-A
JENSEN BEACH, FLORIDA 33457

DESIGN: EF	PROJ. NO.:
DRAWN: MVB	SCALE: 1"=50'
CHECKED: MVB	DATE: Oct/84
DATE: 10/84	SHT: 2 of 2