

50/22

DRAWING NUMBER

DRAWING NUMBER

DRAWING NUMBER

PLAT OF COUNTRY LANDING SECTION TWO

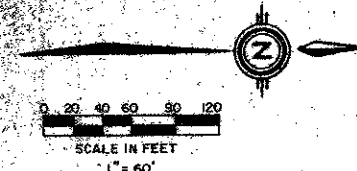
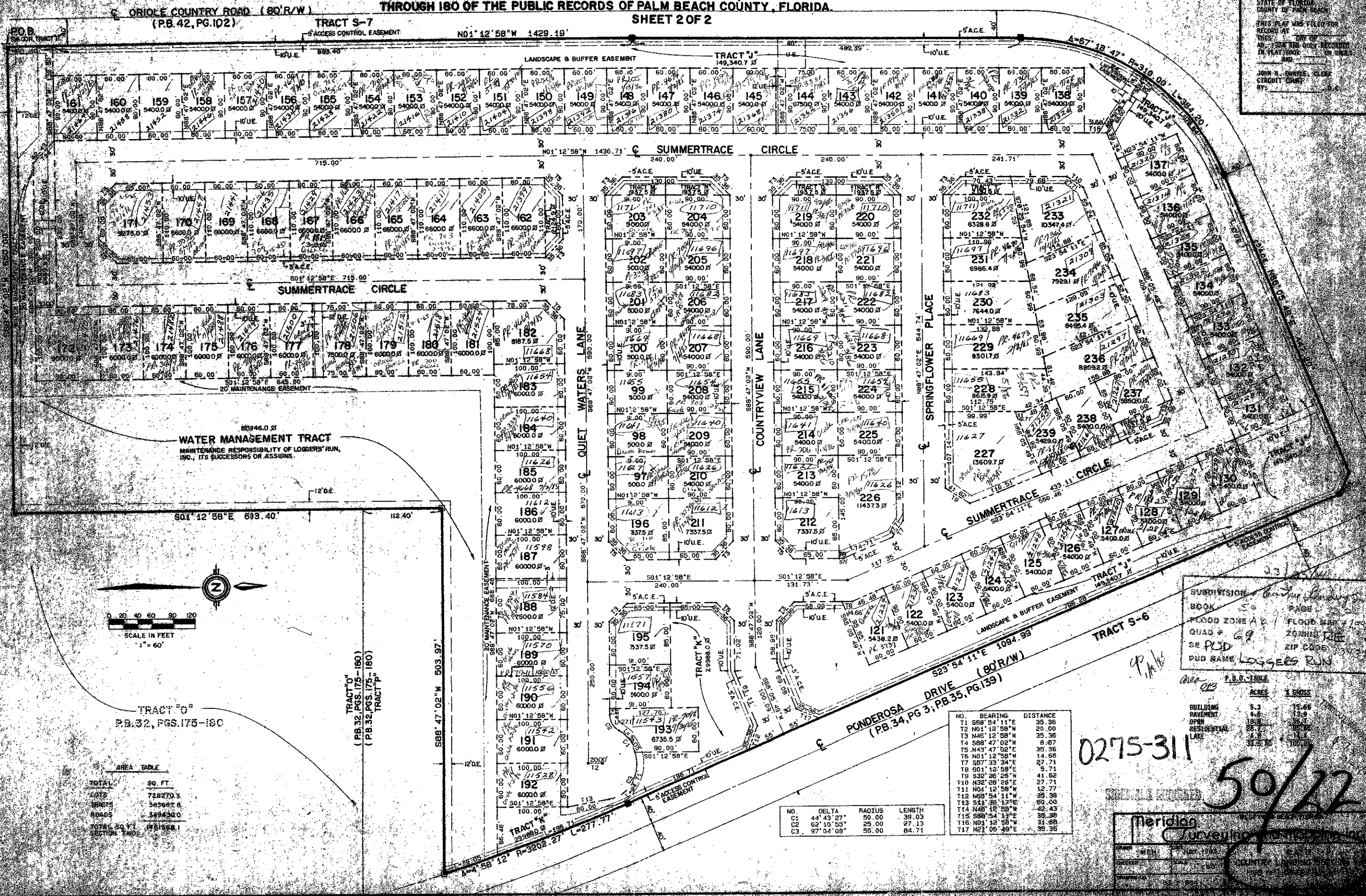
PART OF "LOGGERS' RUN, A P.U.D."

LYING IN SECTION 23, TOWNSHIP 47 SOUTH, RANGE 41 EAST, PALM BEACH COUNTY, FLORIDA, BEING A REPLAT OF A PORTION OF TRACT "P," BOUNDARY PLAT OF ORIOLE COUNTRY AS RECORDED IN PLAT BOOK 32, AT PAGES 175 THROUGH 180 OF THE PUBLIC RECORDS OF PALM BEACH COUNTY, FLORIDA.

SHEET 2 OF 2

STATE OF FLORIDA
COUNTY OF PALM BEACH
THIS PLAT WAS FILED FOR
RECORD AT
THIS DAY OF
A.D. 1984, BY
JOHN B. SUMNER, CLERK
CITY OF PALM BEACH

22



TRACT "O"
P.B. 32, PGS. 175-180

AREA TABLE

TOTAL	SQ. FT.
LOTS	728270.3
ROADS	303667.6
TOTAL	1031937.9
SECTION TWO	1031937.9

TRACT "O"
(P.B. 32, PGS. 175-180)
TRACT "P"
(P.B. 32, PGS. 175-180)

PONDEROSA DRIVE (80'R/W)
(P.B. 34, PG. 3; P.B. 35, PG. 159)

NO.	DELTA	RADIUS	LENGTH
C1	44° 42' 27"	50.00	39.03
C2	62° 10' 55"	25.00	27.13
C3	97° 04' 08"	50.00	84.71

NO.	BEARING	DISTANCE
T1	S89° 54' 11"E	25.36
T2	N01° 12' 58"W	20.00
T3	N46° 12' 58"W	25.36
T4	S89° 47' 02"W	8.67
T5	N43° 47' 32"E	25.36
T6	N01° 12' 58"W	14.58
T7	S87° 33' 24"E	27.71
T8	S01° 12' 58"E	5.71
T9	S32° 26' 29"W	41.62
T10	N32° 26' 29"E	27.71
T11	N04° 12' 58"W	12.77
T12	N89° 54' 11"W	25.36
T13	S44° 38' 17"E	20.00
T14	N46° 12' 58"W	42.43
T15	S89° 54' 11"E	25.36
T16	N01° 12' 58"W	31.68
T17	N21° 05' 49"E	25.36

SUBDIVISION: Country Landings
BOOK: 32 PAGE: 175-180
FLOOD ZONE: A-1 FLOOD MAP: 1-100
QUAD: 69 ZONING: R-1
SE PLD: ZIP CODE: 33409
PUD NAME: LOGGERS' RUN

Area: 0.13

P.L.O. TABLE	ACRES	% GROSS
BUILDING	1.3	15.44
IMPROVEMENT	1.0	11.93
OPEN	1.0	11.93
RESTOREMENT	0.0	0.00
LAKE	0.0	0.00
TOTAL	3.3	100.00

0275-311

50/22

Meridian
SUCCESSION