

49/136

BOCA WOODS COUNTRY CLUB PLAT 8

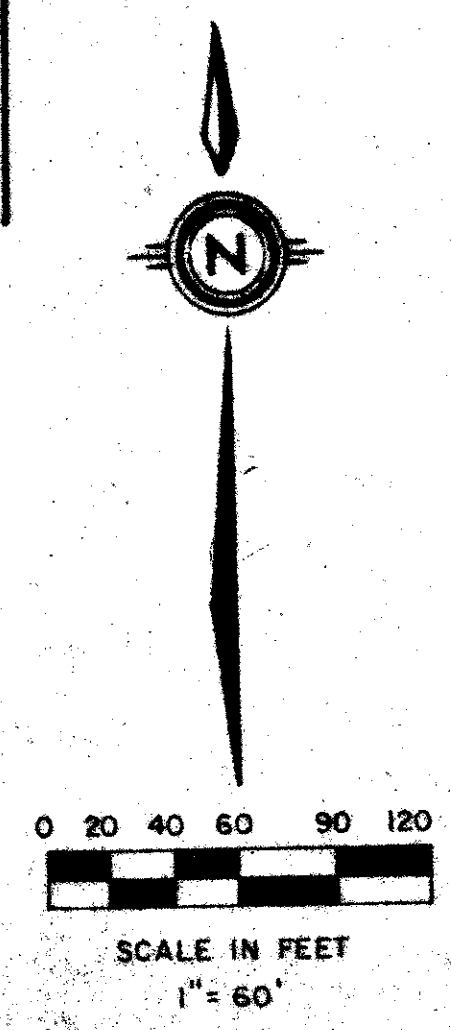
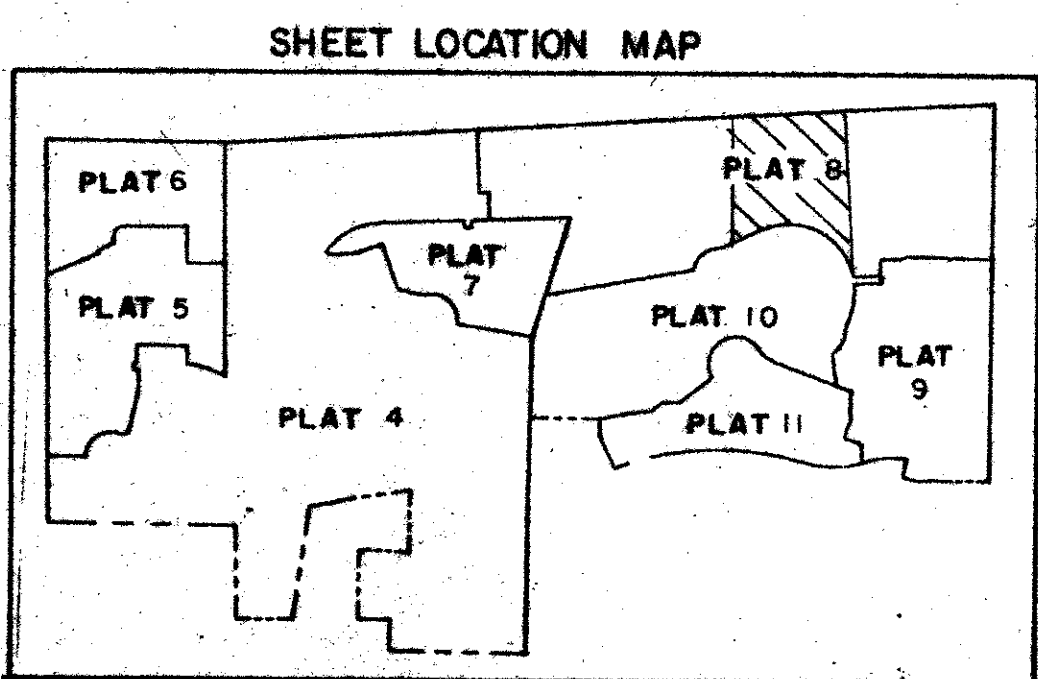
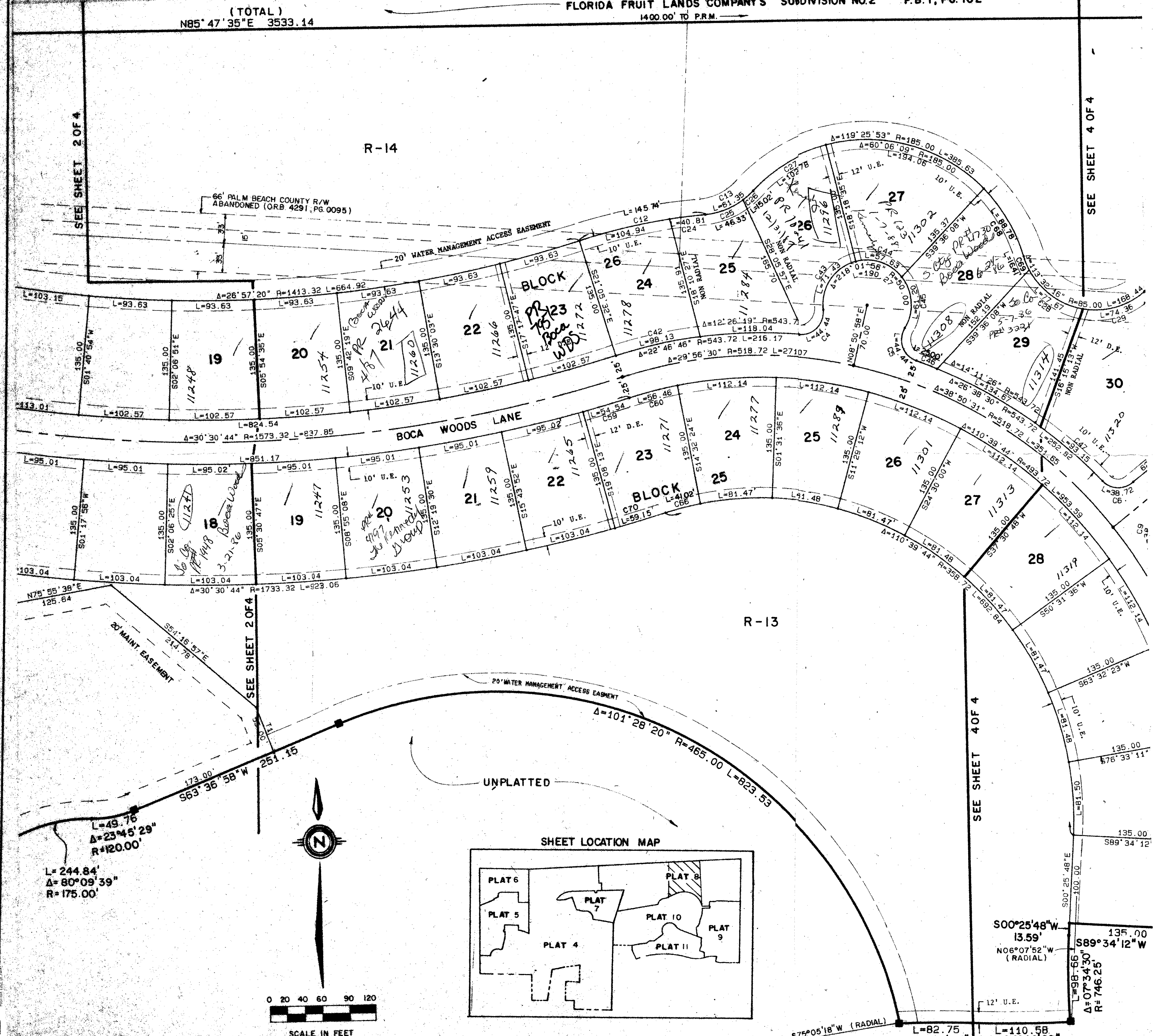
A PART OF BOCA WOODS COUNTRY CLUB, A P.U.D.
 SITUATE IN SECTIONS 13 AND 24, TOWNSHIP 47 SOUTH, RANGE 41 EAST,
 BEING A REPLAT OF A PORTION OF FLORIDA FRUIT LANDS COMPANY'S SUBDIVISION NO. 2
 PALM BEACH COUNTY, FLORIDA.

49/136

STATE OF FLORIDA
 COUNTY OF PALM BEACH
 THIS PLAT WAS FILED FOR
 RECORD AT _____ DAY OF _____
 AD. 1984 AND DULY RECORDED
 IN PLAT BOOK _____ ON PAGES
 AND _____
 JOHN B. DUNKLE, CLERK
 CIRCUIT COURT
 BY: _____, D.C.

TRACT 40 TRACT 57 SHEET 3 OF 4

FLORIDA FRUIT LANDS COMPANY'S SUBDIVISION NO.2 P.B. I, PG. 102



NO.	DELTA	RADIUS	LENGTH	NO.	DELTA	RADIUS	LENGTH
C1	103°33'52"	25.00	45.19	C47	9°48'59"	543.72	99.15
C2	103°33'52"	25.00	45.19	C48	86°34'14"	50.00	77.29
C3	2°13'14"	1058.24	41.05	C49	67°25'30"	50.00	59.84
C4	101°51'14"	25.00	44.44	C50	59°03'22"	50.00	51.54
C5	101°51'14"	25.00	44.44	C51	11°16'13"	543.72	106.95
C6	88°44'26"	25.00	38.72	C52	9°54'01"	543.72	93.95
C7	48°11'23"	25.00	21.03	C53	1°58'48"	543.72	18.79
C8	48°11'23"	25.00	21.03	C54	5°29'38"	646.85	62.02
C9	88°44'26"	25.00	38.72	C55	0°44'43"	646.85	8.41
C10	44°49'06"	85.00	56.49	C56	4°16'50"	1009.24	75.40
C11	50°42'26"	85.00	75.23	C57	3°46'23"	1009.24	66.46
C12	12°18'12"	678.72	145.74	C58	1°18'36"	1598.32	36.52
C13	41°21'10"	85.00	61.35	C59	1°57'18"	1598.32	54.54
C14	43°23'33"	185.00	140.11	C60	6°33'08"	493.72	56.46
C15	70°12'47"	85.00	104.16	C61	5°29'38"	781.95	74.97
C16	2°55'52"	461.85	23.63	C62	0°44'43"	781.95	10.17
C17	2°39'03"	1194.24	55.25	C63	4°16'50"	874.24	65.33
C18	3°19'16"	1194.24	69.22	C64	3°46'23"	874.24	57.57
C19	28°55'56"	85.00	42.92	C65	1°18'32"	1733.32	39.60
C20	15°53'09"	85.00	23.57	C66	6°33'08"	358.72	41.02
C21	8°13'32"	185.00	26.56	C67	51°46'57"	25.00	22.59
C22	16°54'47"	85.00	25.09	C68	27°29'49"	185.00	68.78
C23	33°47'39"	85.00	50.13	C69	11°03'32"	85.00	16.41
C24	3°26'41"	678.72	40.81	C70	1°57'18"	1733.32	59.15
C25	31°13'43"	85.00	46.33				
C26	10°07'27"	85.00	15.02				
C27	31°49'55"	185.00	102.78				
C28	52°21'29"	85.00	77.57				
C29	50°07'25"	85.00	74.36				
C30	4°57'25"	185.00	16.00				
C31	22°22'12"	185.00	72.23				
C32	6°44'40"	85.00	10.01				
C33	63°28'07"	85.00	94.16				
C34	1°58'49"	578.72	23.46				
C35	2°55'52"	596.85	30.53				
C36	2°39'03"	1059.24	49.00				
C37	4°11'02"	1059.24	77.35				
C38	60°49'59"	50.00	53.08				
C39	55°55'20"	50.00	81.10				
C40	2°13'14"	1059.24	41.05				
C41	3°33'24"	1548.32	96.11				
C42	10°20'27"	543.72	98.13				
C43	81°51'25"	50.00	71.43				
C44	66°02'34"	50.00	57.63				
C45	70°07'58"	50.00	61.20				
C46	2°38'05"	543.72	25.00				

Subdivision = Boca Woods CC 8
 BOOK 49 PAGE 136
 PLAT 8 ZONE C
 LEAD # 69
 BOCA WOODS COUNTRY CLUB

0215-302 49/136

Meridian Surveying and mapping inc.
 WEST PALM BEACH, FLORIDA

DRAWN: M.E.H. DATE: JAN 1984
 CHECKED: R.A.H. SCALE: 1" = 60'
 DRAWING NO. 82-P-051

BOCA WOODS COUNTRY CLUB
 PLAT 8