

49/118  
DRAWING NUMBER

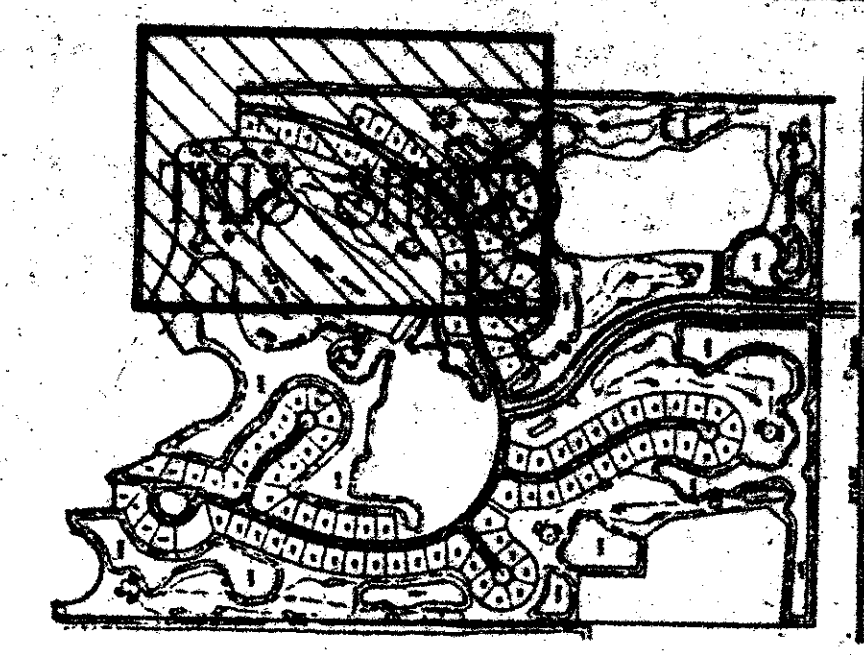
# A part of SOUTHERN MANOR P.U.D. STONEBRIDGE PLAT NO. 1

(a planned unit development)

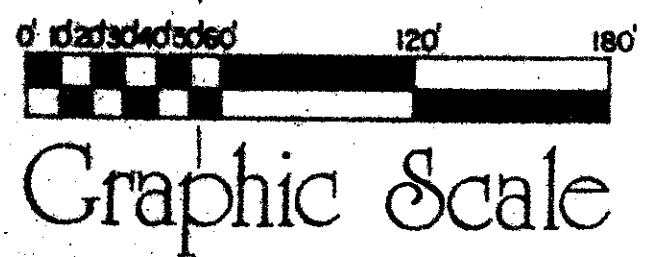
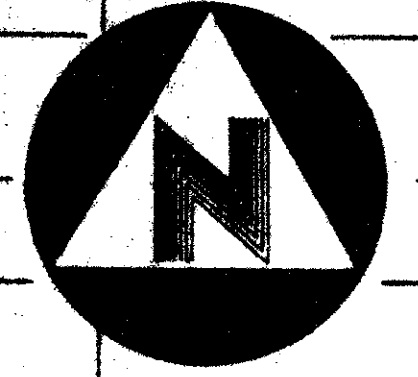
Lying in the South One-Half (S.1/2) of Block 69, Palm Beach Farms Company, Plat No. 3, Plat Book 2, Pages 45-54 (Inclusive),  
Section 36, Township 46 South, Range 41 East, Palm Beach County, Florida

June, 1984  
Sheet 7 of 8

PALM BEACH FARMS COMPANY  
PLAT NO. 3  
PLAT BOOK 2, PAGES 45-54 (INCLUSIVE)



STATE OF FLORIDA  
COUNTY OF PALM BEACH  
THIS PLAT WAS FILED FOR  
RECORD AT \_\_\_\_\_ DAY OF  
THIS \_\_\_\_\_ AD, 1984 AND  
DULY RECORDED IN PLAT BOOK  
\_\_\_\_ ON PAGES \_\_\_\_ AND  
JOHN B. DUNKLE, CLERK  
CIRCUIT COURT  
BY: \_\_\_\_\_ DC

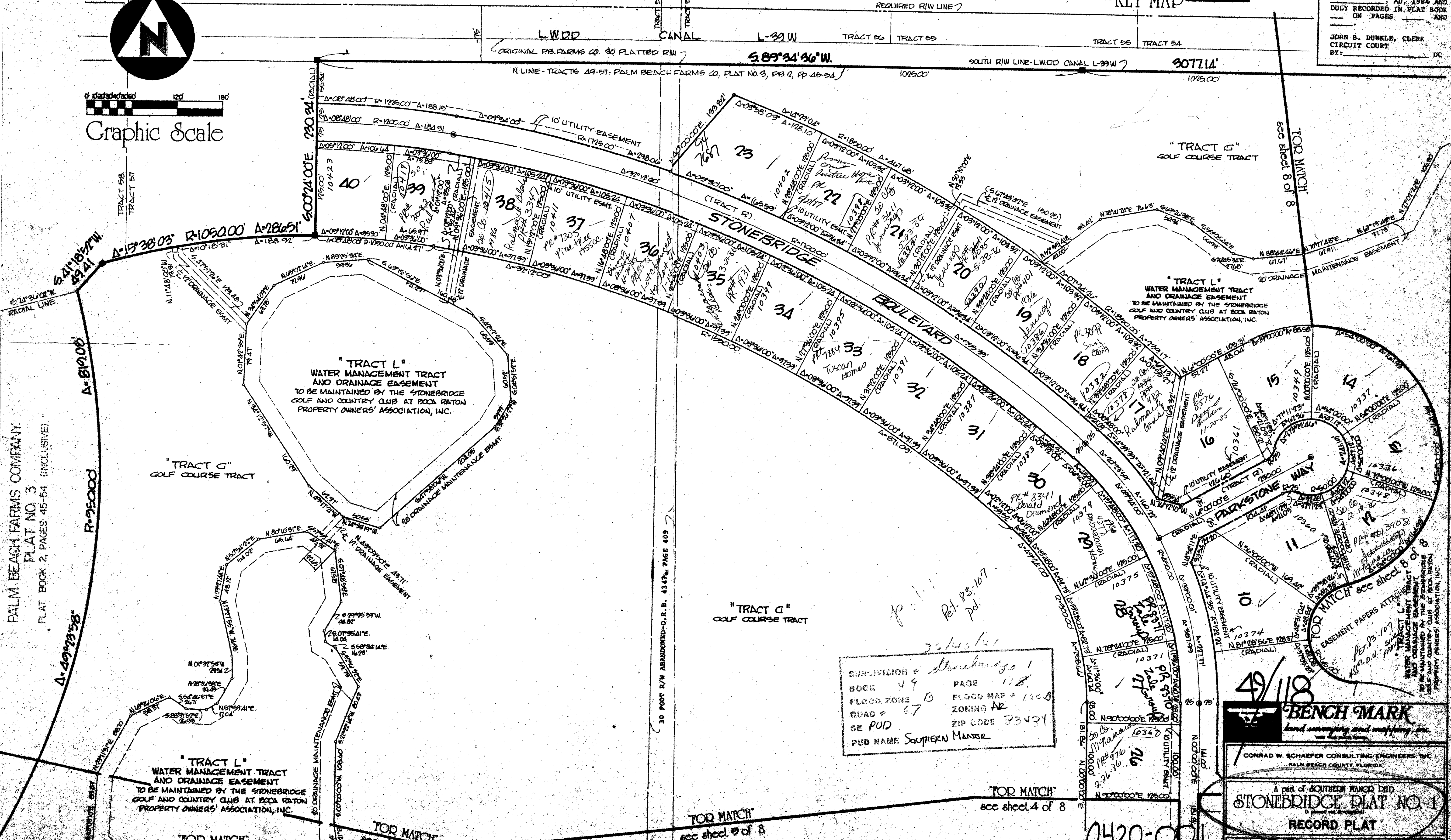


DRAWING NUMBER

DRAWING NUMBER

DRAWING NUMBER

PALM BEACH FARMS COMPANY  
PLAT NO. 3  
PLAT BOOK 2, PAGES 45-54 (INCLUSIVE)



SUBDIVISION Stonebridge 1  
BOOK 49 PAGE 118  
FLOOD ZONE B FLOOD MAP # 1000  
QUAD # 67 ZONING AR  
SE PUD ZIP CODE 33409  
PUD NAME SOUTHERN MANOR

**BENCH MARK**  
Land surveying and mapping, inc.  
CONRAD W. SCHAEFER CONSULTING ENGINEERS, INC.  
PALM BEACH COUNTY, FLORIDA

A part of SOUTHERN MANOR P.U.D.  
**STONEBRIDGE PLAT NO. 1**  
RECORD PLAT

THIS INSTRUMENT WAS PREPARED BY WILLIAM R. VAN CAMPEN IN THE  
OFFICES OF BENCHMARK LAND SURVEYING AND MAPPING, INC., 2833  
EXHIBIT COURT, WEST PALM BEACH, FLORIDA, 33409 (305-699-2111)