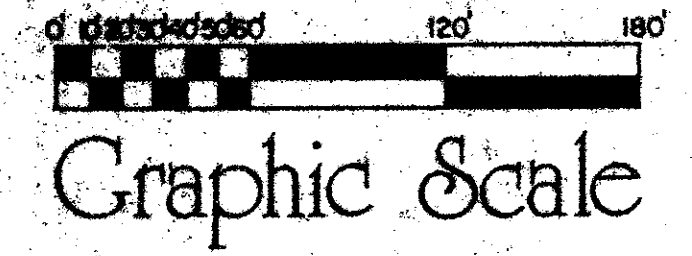


DRAWING NUMBER  
**49/115**



# A part of SOUTHERN MANOR P.U.D. STONEBRIDGE PLAT NO. 1

(a planned unit development)

Lying in the South One-Half (S.1/2) of Block 69, Palm Beach Farms Company, Plat No. 3, Plat Book 2, Pages 45-54 (Inclusive),  
Section 36, Township 46 South, Range 41 East, Palm Beach County, Florida  
June, 1984  
Sheet 4 of 8

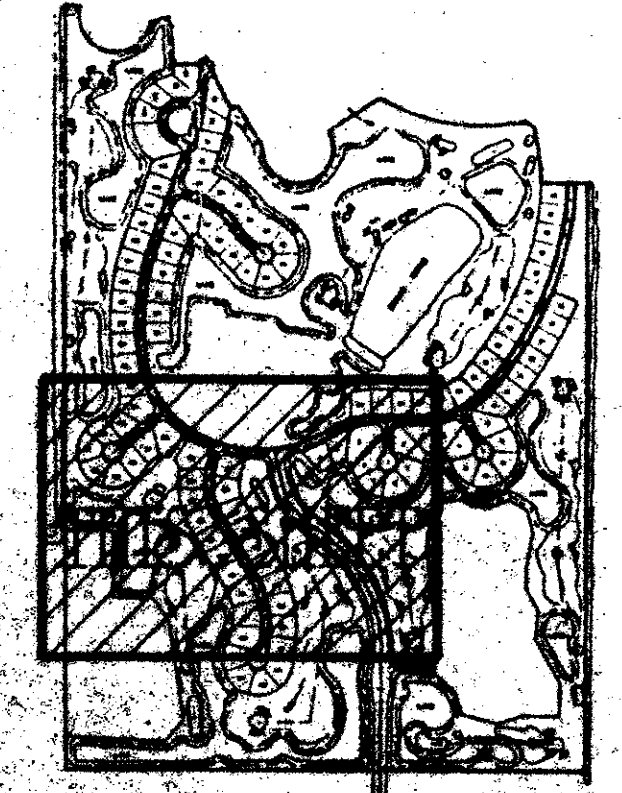
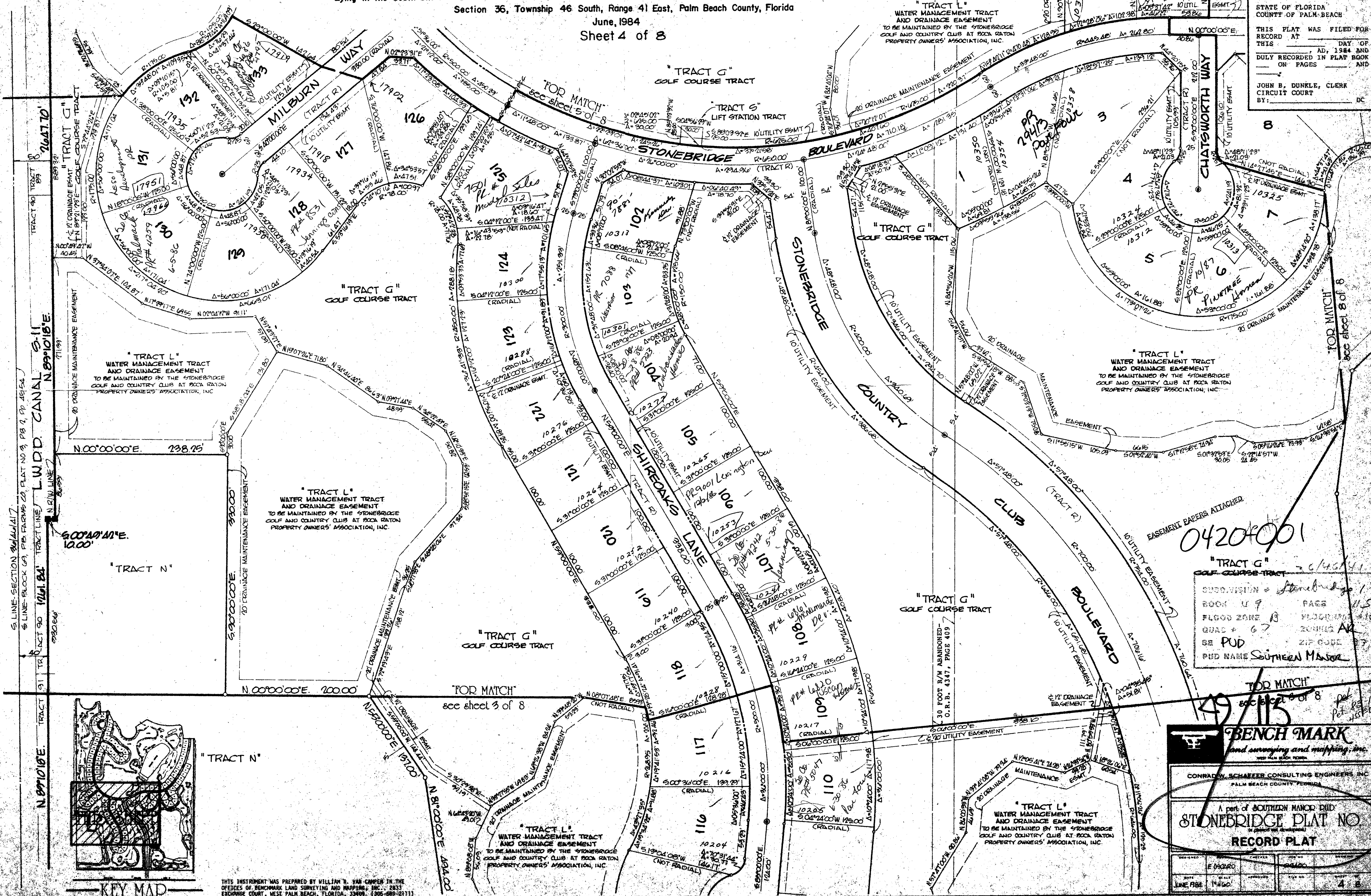
49/ **115**

STATE OF FLORIDA  
COUNTY OF PALM BEACH  
THIS PLAT WAS FILED FOR  
RECORD AT \_\_\_\_\_ DAY OF  
THIS \_\_\_\_\_ AD, 1984, AND  
DULY RECORDED IN PLAT BOOK  
\_\_\_\_\_ ON PAGES \_\_\_\_\_ AND  
\_\_\_\_\_  
JOHN B. DUNKLE, CLERK  
CIRCUIT COURT BY: \_\_\_\_\_ DC

DRAWING NUMBER

DRAWING NUMBER

DRAWING NUMBER



THIS INSTRUMENT WAS PREPARED BY WILLIAM R. VAN CAMPEN IN THE  
OFFICES OF EICHENMARK LAND SURVEYING AND MAPPING, INC., 2835  
EICHENMARK COURT, WEST PALM BEACH, FLORIDA, 33411, (561) 835-2111

0420001

"TRACT G"  
GOLF COURSE TRACT  
SUBDIVISION = Stonebridge  
BOOK 19 PAGE 115  
FLGOD ZONE B PLGODRANGE 1000  
QUAD # 67 ZONING AR  
SE PUD ZIP CODE 33408  
PUD NAME Southern Manor

49/115  
TOP MATCH  
see sheet 3 of 8  
see sheet 5 of 8

**BENCH MARK**  
land surveying and mapping, inc.  
CONRAD W. SCHAEFER CONSULTING ENGINEERS, INC.  
PALM BEACH COUNTY, FLORIDA  
A part of SOUTHERN MANOR P.U.D.  
**STONEBRIDGE PLAT NO. 1**  
RECORD PLAT

DATE	FILED	APPROVED	BY
LINE FILED	1984		4 8