

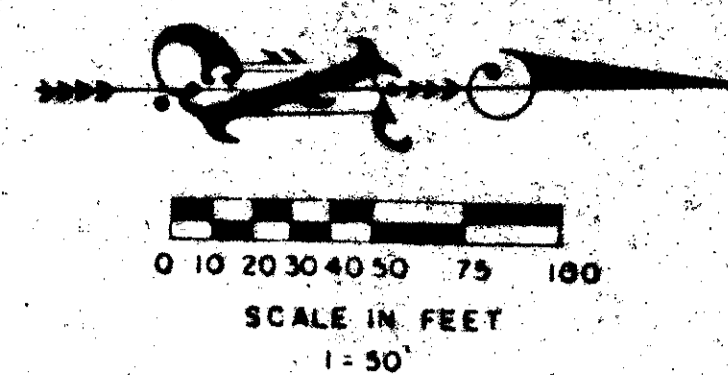
49/111

# THE PALM CLUB WEST - VILLAGE I A PART OF LAKESIDE GREEN - P.U.D.

SITUATE IN SECTION 13, TOWNSHIP 43 SOUTH, RANGE 42 EAST,  
PALM BEACH COUNTY, FLORIDA

SHEET 3 OF 3

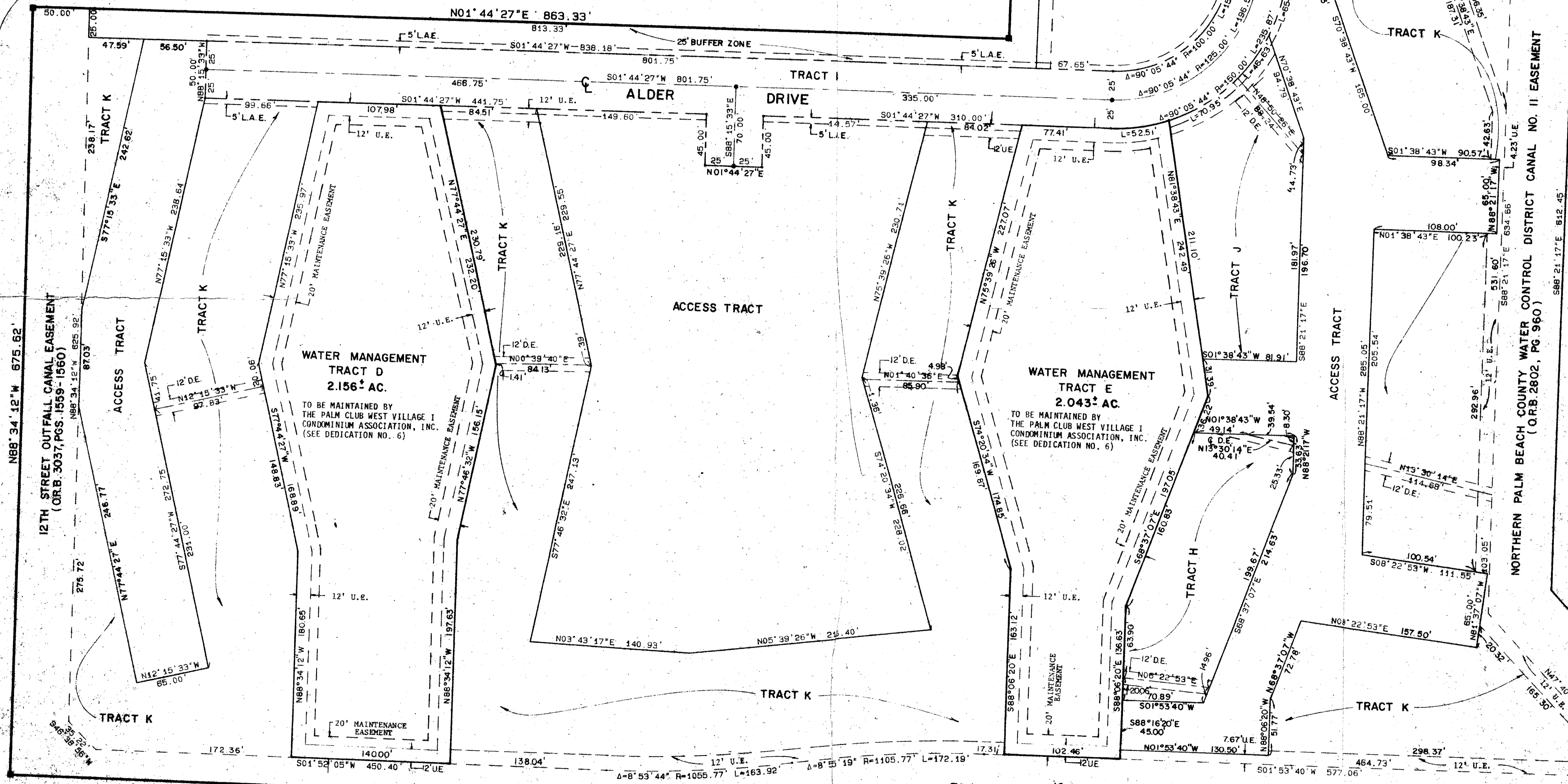
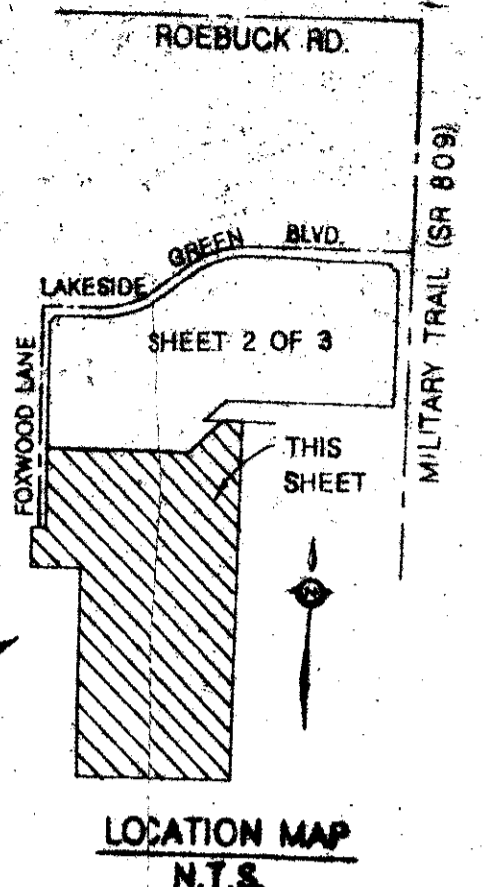
FOXWOOD ESTATES PLAT NO. 1  
OF LAKESIDE GREEN - P.U.D.  
(P.B. 34, PGS. 78-80)



111

STATE OF FLORIDA  
COUNTY OF PALM BEACH  
THIS PLAT WAS FILED FOR  
RECORD AT \_\_\_\_\_ DAY OF \_\_\_\_\_  
AD, 1984 AND DULY RECORDED  
IN PLAT BOOK \_\_\_\_\_ ON PAGE(S) \_\_\_\_\_  
AND \_\_\_\_\_  
JOHN B. DUNKLE, CLERK  
CIRCUIT COURT  
BY: \_\_\_\_\_, D.C.

FINERIDGE AT HAVERHILL - A P.U.D.  
(P.B. 43, PGS. 11-12)



MATCH LINE  
SEE SHEET 2 OF 3

13/2/84  
SUBDIVISION *The Palm Club West Village I*  
BOOK 49 PAGE 111  
FLOOD ZONE 0 FLOOD MAP 850  
CHART 30 ZONING RS  
SE PUD ZIP CODE 33409  
PUD NAME LAKESIDE GREEN

*Note due per letter 10/77/81/5*

0265-309 49/111

Meridian Surveying and mapping inc  
WEST PALM BEACH, FLORIDA  
DATE: APRIL, 1984  
SCALE: 1" = 50'  
PROJECT: THE PALM CLUB WEST - VILLAGE I  
A PART OF LAKESIDE GREEN - P.U.D.  
DRAWING NO. 84-P-029

DRAWING NUMBER

DRAWING NUMBER

DRAWING NUMBER

PLAN HOLD CORPORATION • IRVINE, CALIFORNIA  
REORDER BY NUMBER 07348

UNPLATTED