

DRAWING NUMBER
49/110

THE PALM CLUB WEST - VILLAGE I A PART OF LAKESIDE GREEN - P.U.D.

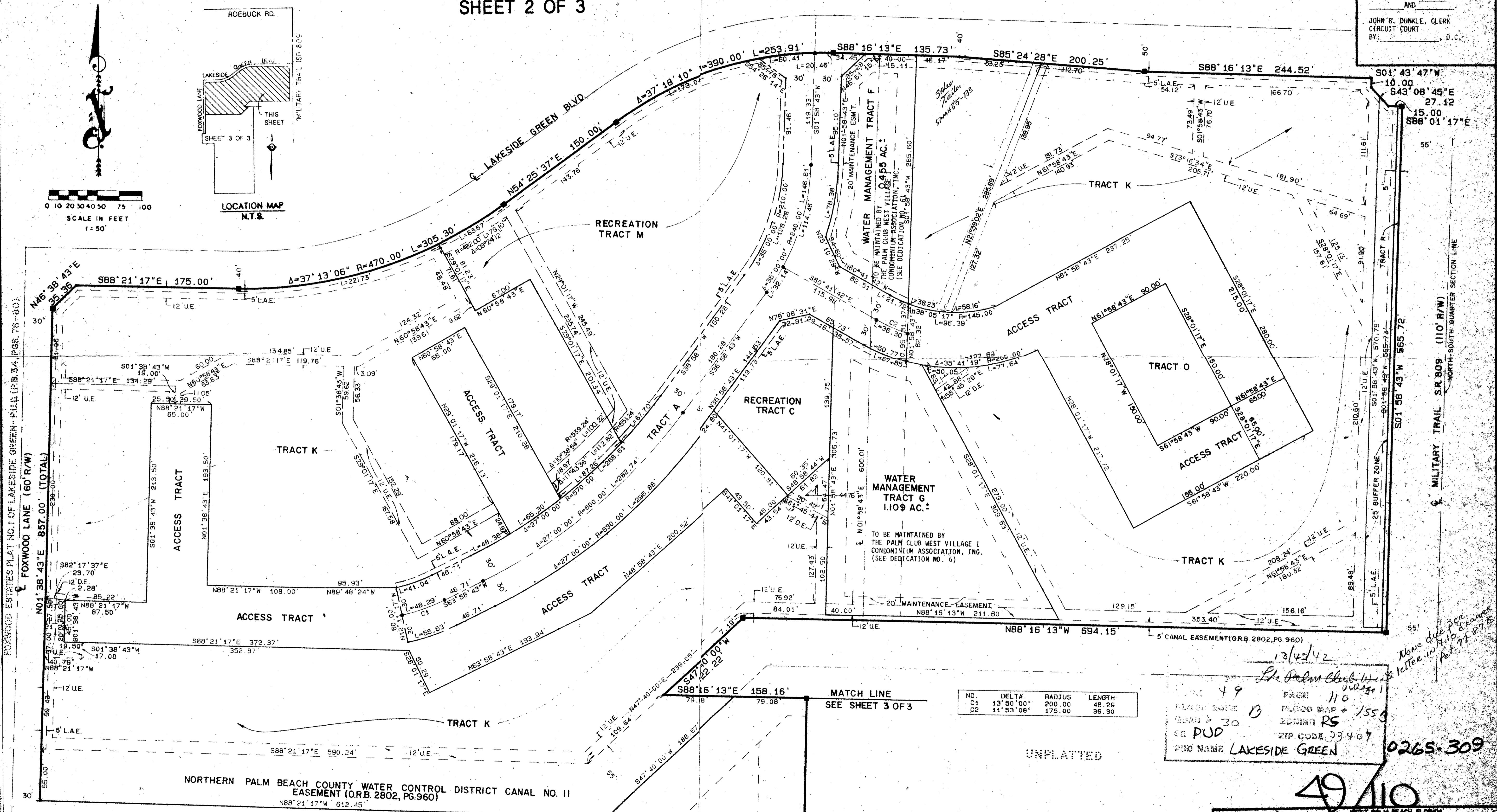
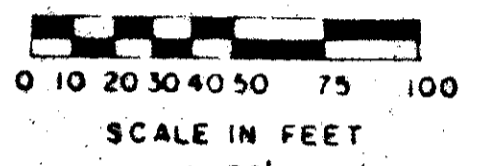
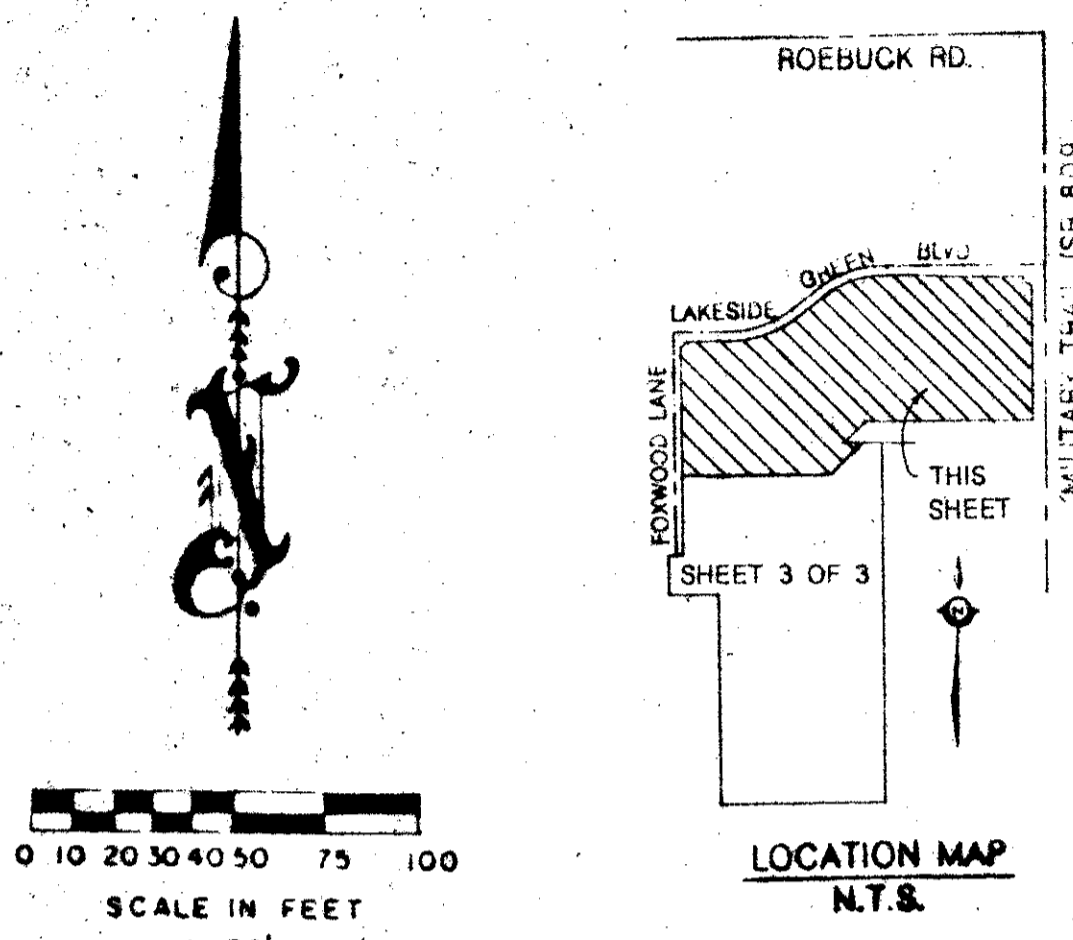
110

SITUATE IN SECTION 13, TOWNSHIP 43 SOUTH, RANGE 42 EAST,
PALM BEACH COUNTY, FLORIDA

SHEET 2 OF 3

FOXWOOD ESTATES PLAT NO. 3
OF LAKESIDE GREEN - P.U.D.
(P.B. 40, PGS 124-125)

STATE OF FLORIDA
COUNTY OF PALM BEACH
THIS PLAT WAS FILED FOR
RECORD AT _____ DAY OF _____
AD. 1984 AND DULY RECORDED
IN PLAT BOOK _____ ON PAGE _____
AND _____
JOHN B. DUNKLE, CLERK
CIRCUIT COURT
BY: _____, D.C.



DRAWING NUMBER

DRAWING NUMBER

DRAWING NUMBER

NO.	DELTA	RADIUS	LENGTH
C1	13° 50' 00"	200.00	48.29
C2	11° 53' 08"	175.00	36.30

13/12/42
The Palm Club West Village I
PAGE 110
PLAT BOOK 0 FLOOD MAP 1559
ROAD 30 ZONING RS
SR PUD ZIP CODE 33407
PUD NAME LAKESIDE GREEN

0265-309

Meridian Surveying and Mapping Inc.
WEST PALM BEACH, FLORIDA

DRAWN	MEH	DATE	APRIL 1984
CHECKED	MEH	SCALE	1" = 5'
DRAWING NO.	84-P-023		

THE PALM CLUB WEST - VILLAGE I
A PART OF LAKESIDE GREEN - P.U.D.