

DRAWING NUMBER
49/70

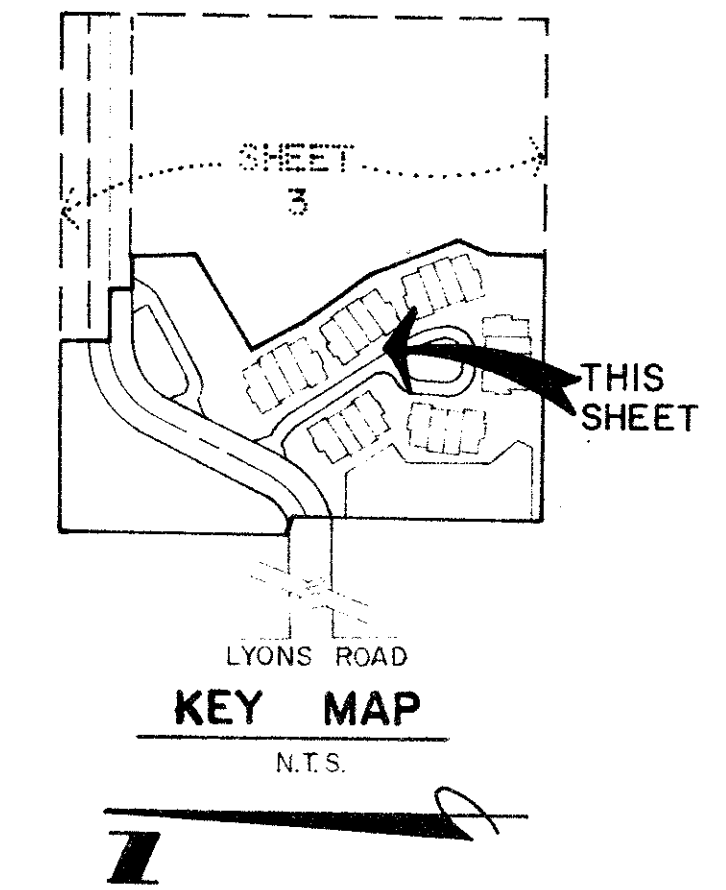
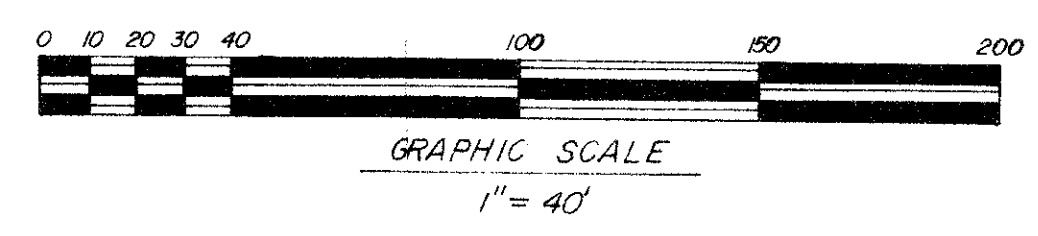
DRAWING NUMBER

DRAWING NUMBER

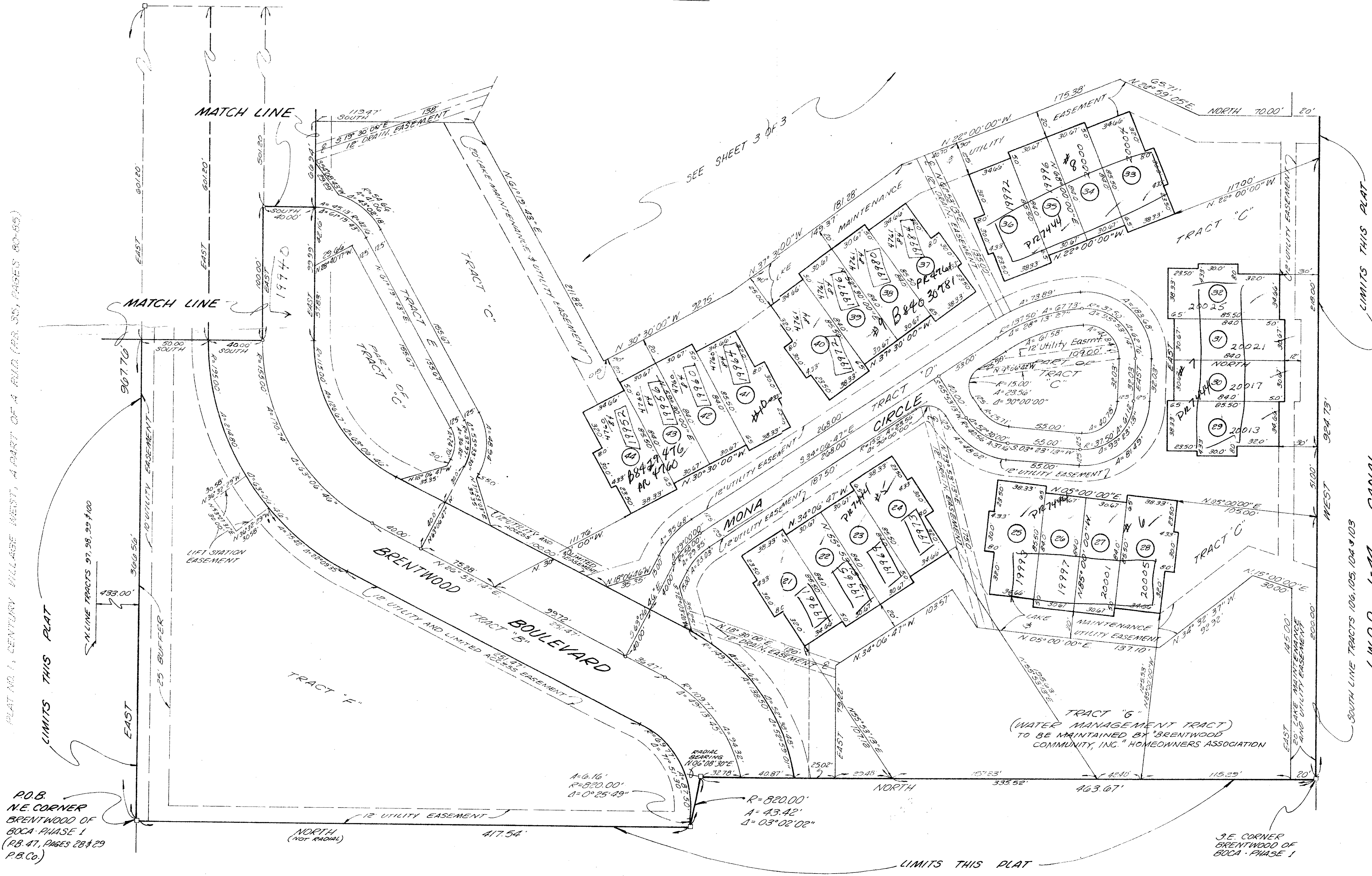
DRAWING NUMBER

BRENTWOOD OF BOCA · PHASE 2

A PART OF "BRENTWOOD PLACE" P.U.D.
A REPLAT OF TRACTS 104 AND 105, AND A PORTION OF TRACTS 97, 98, 99, 103 AND 106, ALL IN BLOCK 75,
THE PALM BEACH FARMS COMPANY PLAT No. 3 AS RECORDED IN PLAT BOOK 2, PAGES 45 THROUGH 54,
LYING IN SECTIONS 8 AND 17, TOWNSHIP 47 SOUTH, RANGE 42 EAST, PALM BEACH COUNTY, FLORIDA

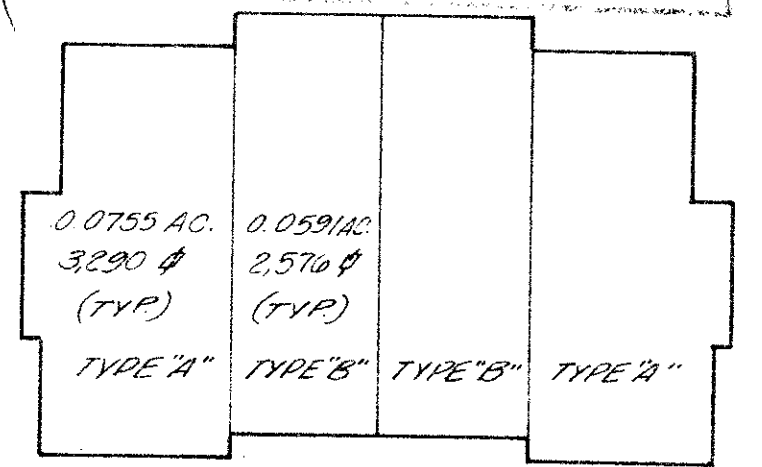


49/70



NOTES:

1. □ INDICATES P.R.M. PERMANENT REFERENCE MONUMENT
2. ○ INDICATES P.C.P. PERMANENT CONTROL POINT
3. SETBACKS SHALL BE IN ACCORDANCE WITH PALM BEACH COUNTY ZONING CODE
4. BEARINGS SHOWN HEREON ARE BASED ON AN ASSUMED MERIDIAN OF EAST ALONG THE NORTH BOUNDARY OF "BRENTWOOD OF BOCA PHASE 1" AS RECORDED IN PLAT BOOK 47, PAGES 28 & 29 OF THE PUBLIC RECORDS OF PALM BEACH COUNTY, FLORIDA
5. a) NO BUILDINGS OR ANY KIND OF CONSTRUCTION SHALL BE PLACED ON UTILITY OR DRAINAGE EASEMENTS
- b) NO STRUCTURES, TREES OR SHRUBS SHALL BE PLACED ON DRAINAGE EASEMENTS
- c) APPROVAL OF LANDSCAPING ON UTILITY EASEMENTS OTHER THAN WATER AND SEWER SHALL BE ONLY WITH THE APPROVAL OF ALL UTILITIES OCCUPYING SAME.
6. ① INDICATES LOT NUMBERS.



0218-002

	ACRES	SQ. FOOTAGE
TRACT "B"	2.055	89,528
TRACT "C"	6.149	267,834
TRACT "D"	0.923	40,215
TRACT "E"	0.183	7,958
TRACT "F"	2.457	107,046
TRACT "G"	3.979	173,336
26 TYPE "A" LOTS	1.963	85,540
26 TYPE "B" LOTS	1.538	66,976
TOTAL THIS PLAT	19.246	838,433

TOTAL ACRES	19.246 ACRES
RECREATION AREA	2.935 ACRES
OPEN SPACE	10.25 ACRES
TOTAL DWELLING UNITS	52
DWELLING UNITS/ACRE	2.702

BRENTWOOD OF BOCA · PHASE 1 A PART OF "BRENTWOOD PLACE" P.U.D. (P.B. 47, PAGES 28 & 29)

BRENTWOOD OF BOCA #2 49/70 SHEET 2 OF 3