

A PART OF A P. U. D. HARBOUR LANDING

A PLAT OF A PORTION OF SECTION 1, TOWNSHIP 47 SOUTH, RANGE 41 EAST
AND ALSO BEING A REPLAT OF PARCEL N OF LAKES AT BOCA RATON—PHASE I AS RECORDED IN
PLAT BOOK 48, PAGES 139 — 141 OF THE PUBLIC RECORDS OF PALM BEACH COUNTY, FLORIDA
PALM BEACH COUNTY, FLORIDA

JOHN A. GRANT, JR., INC.

CONSULTING ENGINEERS AND LAND SURVEYORS

BOCA RATON, FLORIDA

APRIL 1984

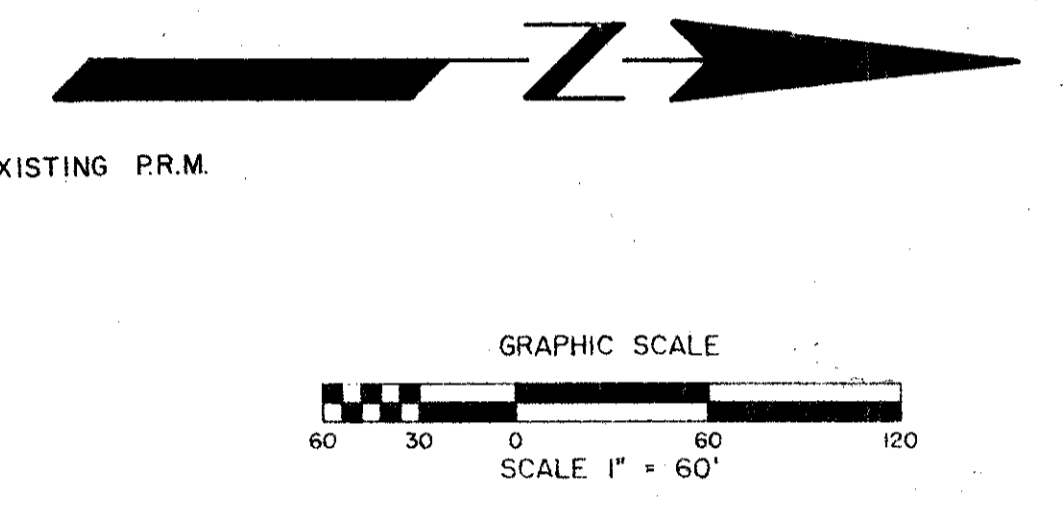
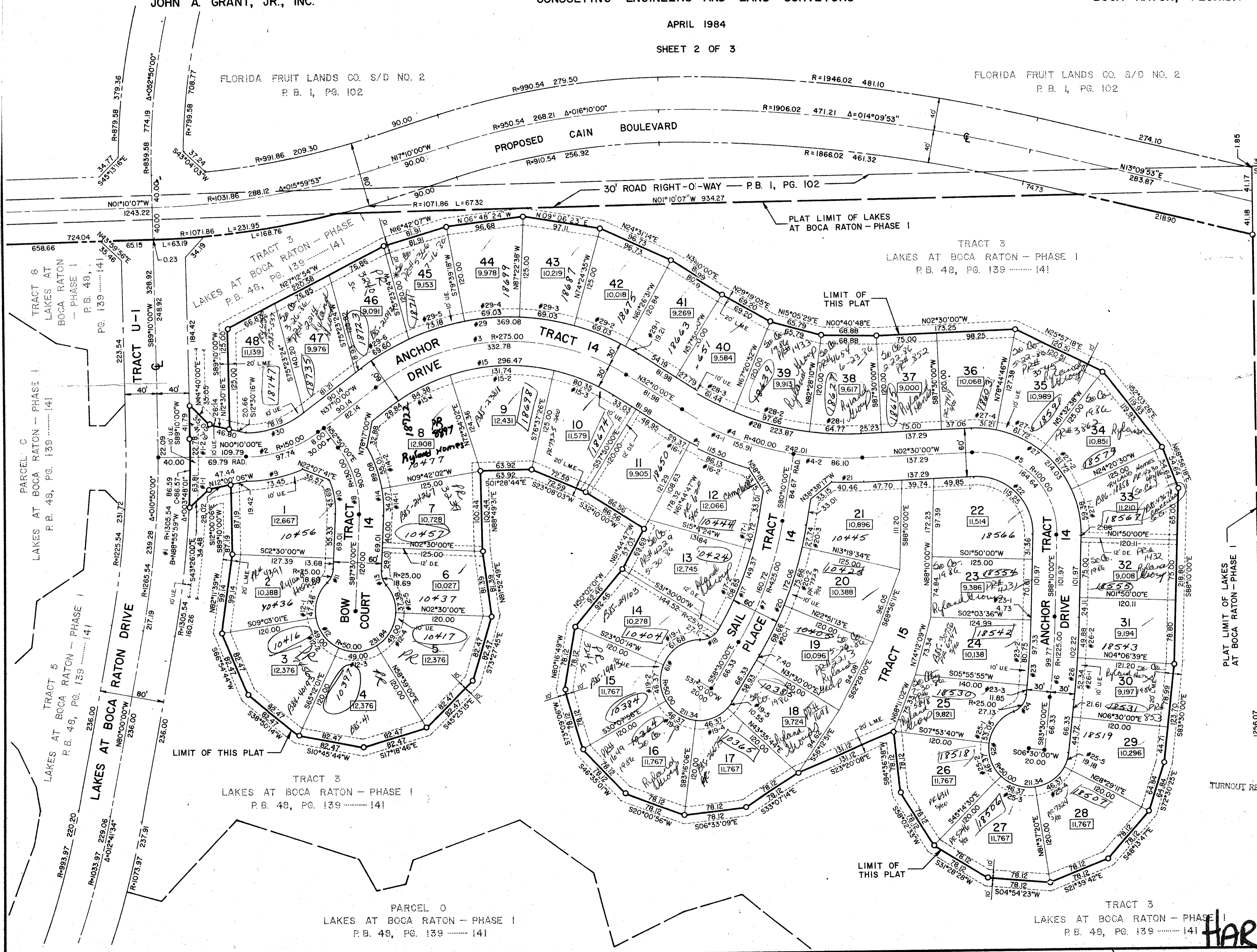
SHEET 2 OF 3

49/22
DRAWING NUMBER

DRAWING NUMBER

DRAWING NUMBER

DRAWING NUMBER



BOCA CHASE SECTION FOUR
P.B. 45, PG. 197 & 198

47/41

SECTION 4 Harbour Landing
BOOK 49 PAGE 22
FLOOD ZONE B FLOOD MAP 1000
ROAD * G* BOARDS RTS
PUD ZIP CODE 33433
PUB NAME LAKES AT BOCA RATON

- NOTES:
- Bearings shown hereon are based on a bearing of S.00°59'03"E. along the Range line (West line Sec. 6, T. 47 S., R. 42 E.) as obtained from the Section breakdown map - Sec. 1, T. 47 S., R. 41 E. from Palm Beach County.
 - No buildings or any kind of construction shall be placed on utility or drainage easements.
 - No structures, trees or shrubs shall be placed on drainage easements.
 - Approval of landscaping on utility easements, other than water and sewer, shall be only with the approval of all utilities occupying same.
 - P.R.M. Indicates Permanent Reference Monument.
 - P.C.P. Indicates Permanent Control Point.
 - U.E. Indicates Utility Easement.
 - D.E. Indicates Drainage Easement.
 - L.M.E. Indicates Lake Maintenance Easement.
 - * Indicates non-radial course.
 - All other side lot lines drawn to arcs in this plat are radial to such arcs.

0388-304

49/22
HARBOUR LANDING

This instrument was prepared by:
John A. Grant, Jr., John A. Grant, Jr., Inc.
3333 North Federal Highway, Boca Raton, Florida 33431.