

DRAWING NUMBER
49/10

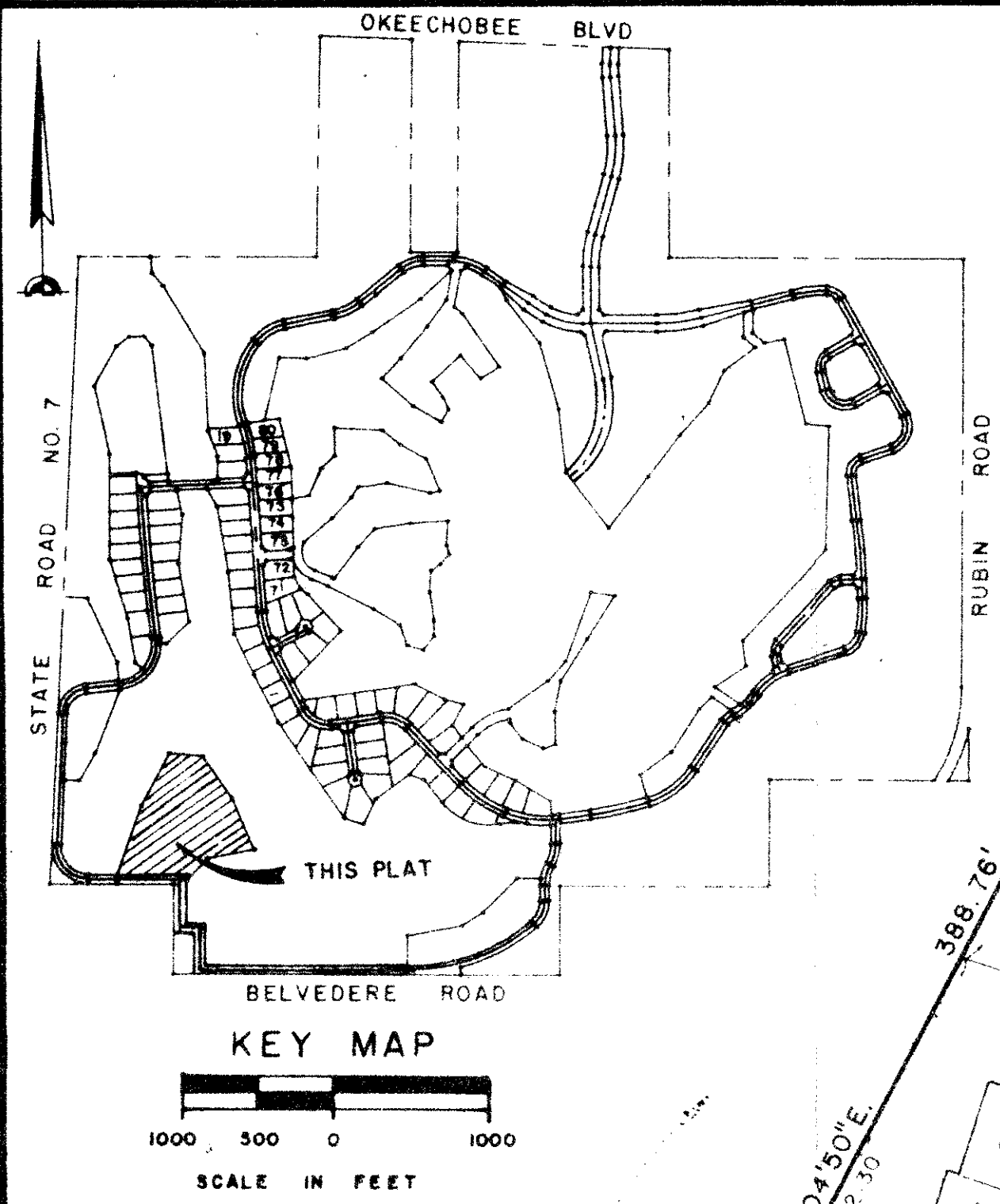
PLAN HOLD CORPORATION • IRVINE, CALIFORNIA
REORDER BY NUMBER 07548

10

— "A PART OF A PLANNED UNIT DEVELOPMENT" —
BREAKERS WEST PLAT NO. 6
SAND DRIFT VILLAS

FALM BEACH COUNTY, FLORIDA
SHEET 2 OF 2 SHEETS
APRIL 1984

HUTCHEON ENGINEERS
CIVIL ENGINEERS & SURVEYORS
1111 S. W. 11th St. Ft. Lauderdale, Fla. 33304



DRAWING NUMBER

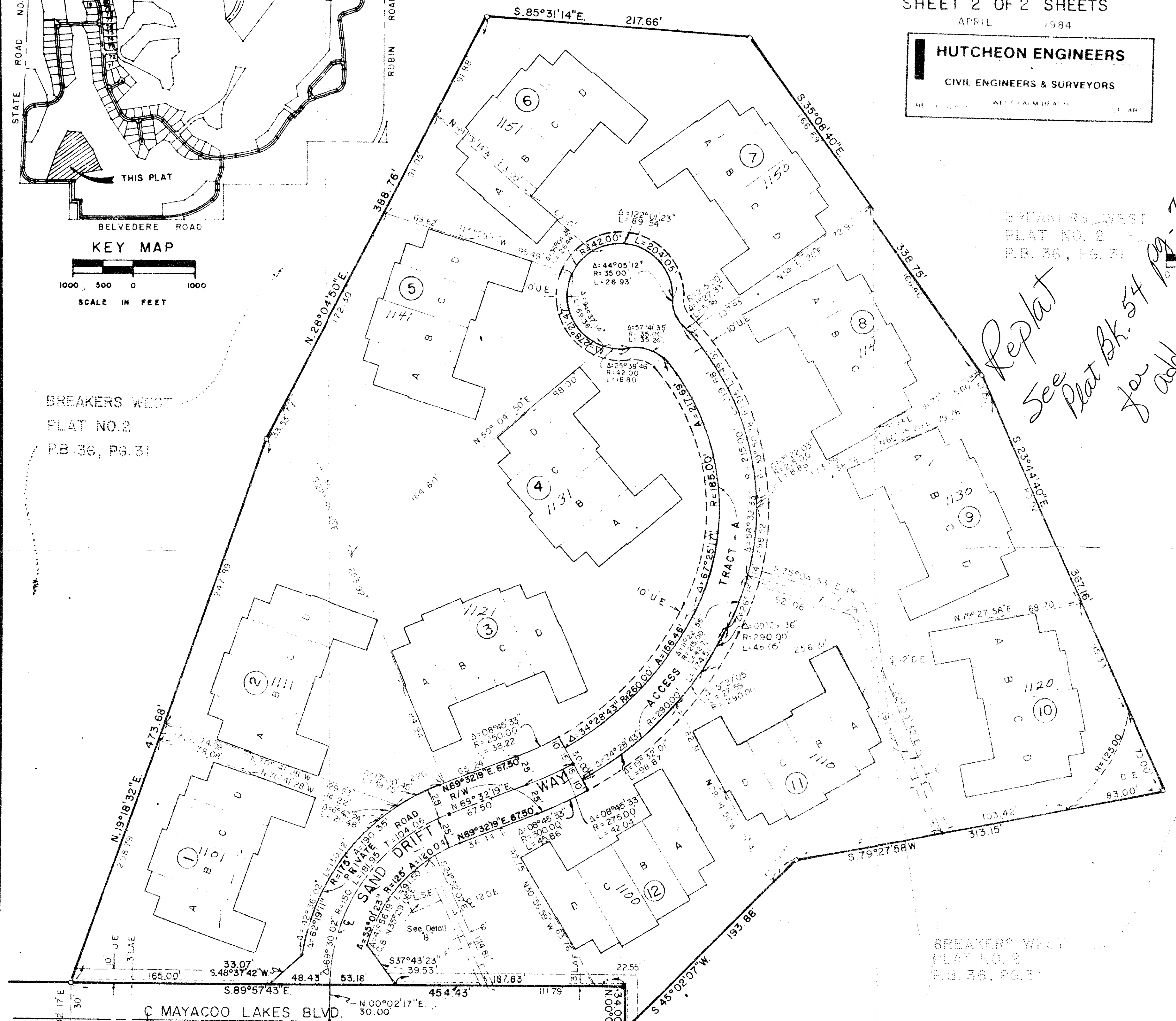
DRAWING NUMBER

DRAWING NUMBER

PLAN HOLD CORPORATION • IRVINE, CALIFORNIA
REORDER BY NUMBER 07548

PLAN HOLD CORPORATION • IRVINE, CALIFORNIA
REORDER BY NUMBER 07548

BREAKERS WEST
PLAT NO. 2
P.B. 36, P.G. 31



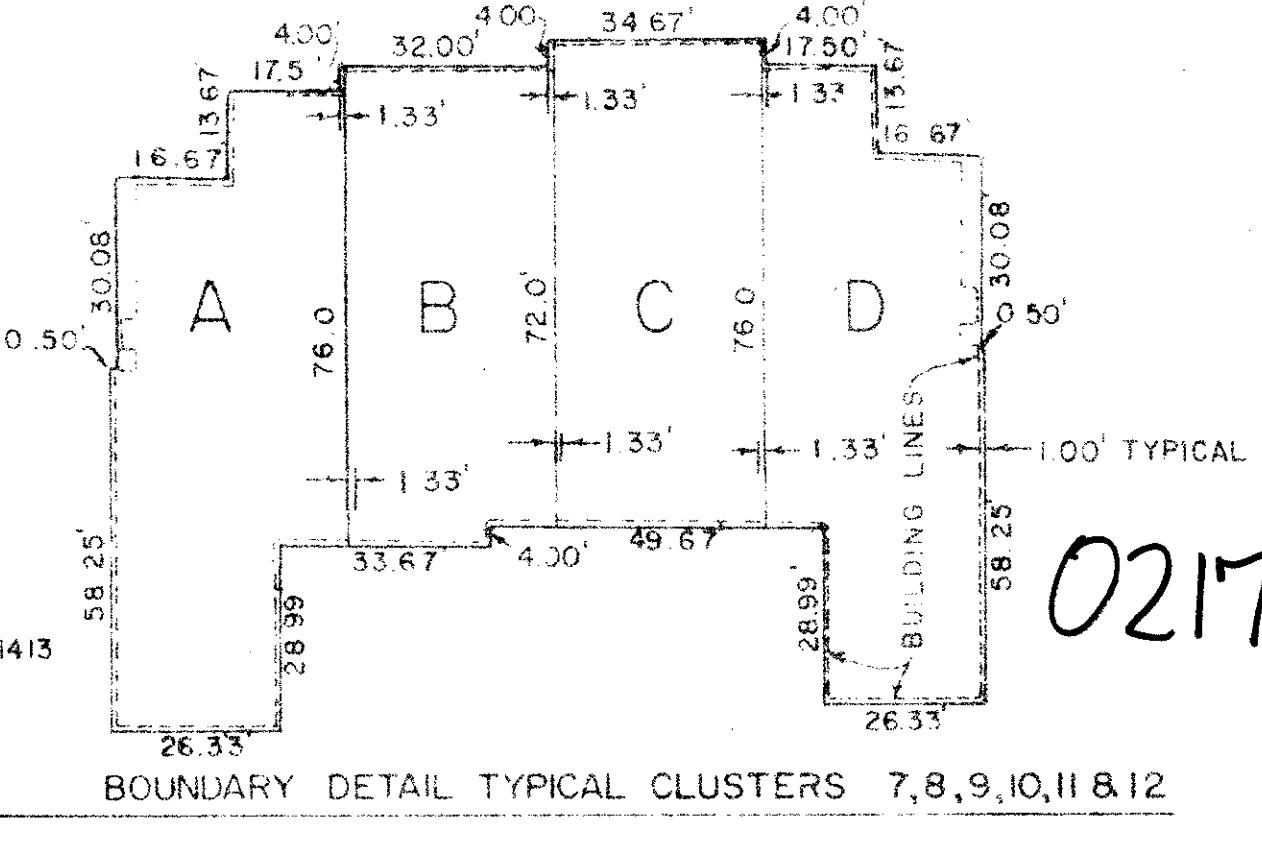
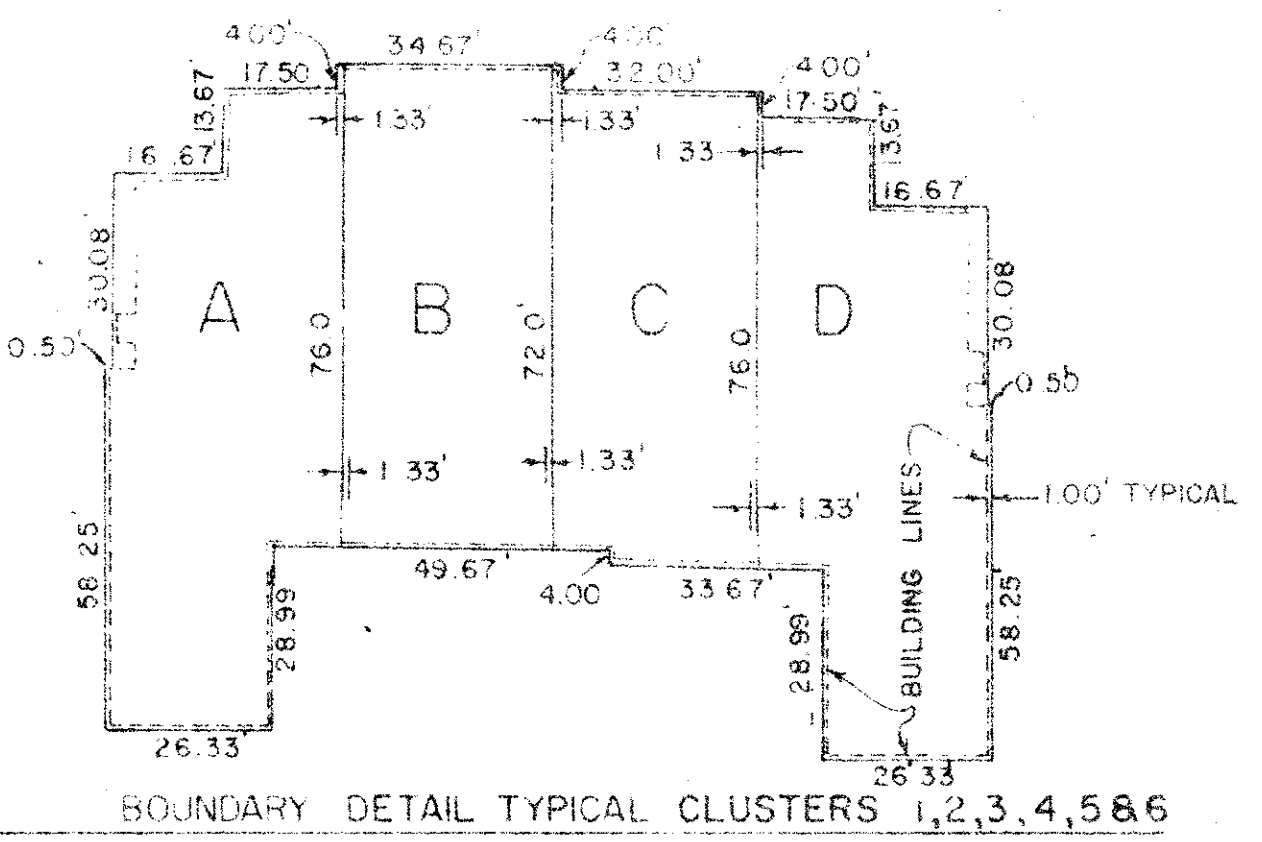
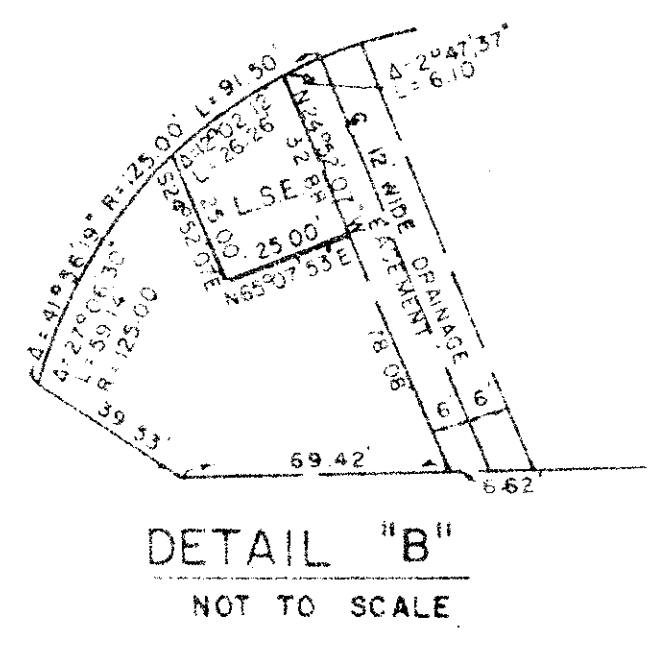
BREAKERS WEST
PLAT NO. 2
P.B. 36, P.G. 31

*Replat
See Plat Bk. 54 pg. 72-73
for address.*

DESCRIPTION

A TRACT OF LAND LYING IN SECTIONS 30 AND 31, TOWNSHIP 43 NORTH, RANGE 42 EAST, PALM BEACH COUNTY, FLORIDA, MORE PARTICULARLY DESCRIBED AS FOLLOWS:
PLATING PARCEL F, BREAKERS WEST PLAT NO. 3 AS RECORDED IN PLAT BOOK 45, PAGES 25 AND 26 OF THE PUBLIC RECORDS OF PALM BEACH COUNTY, FLORIDA
LESS AND INCLUDING THAT PART IDENTIFIED AS "PRIVATE ROAD" ON SAID PLAT NO. 3

REVISION	PAGE
1	BLOOD MAP #
2	ZONING
3	FIA CODE



SURVEYOR'S NOTES

1. NO BUILDINGS OR ANY KIND OF CONSTRUCTION SHALL BE PLACED ON UTILITY OR DRAINAGE EASEMENTS.
2. NO STRUCTURES, TREES OR SHRUBS SHALL BE PLACED ON DRAINAGE EASEMENTS.
3. APPROVAL OF LANDSCAPING OR UTILITY EASEMENTS OTHER THAN WATER OR SEWER SHALL BE OBTAINED WITH APPROVAL OF ALL UTILITIES OCCUPYING SAME.
4. BEARINGS SHOWN HEREON ARE BASED ON AN ASSUMED BEARING OF N. 89° 57' 42" W. PER THE NORTHER LINE OF TRACT 13, BLOCK 1, PALM BEACH TOWN COMPANY'S PLAT NO. 3.
5. EACH LETTERED TRACT SHOWN HEREON IS A FOOT WITH THE EXCEPTION OF ACCESS TRACT A.
6. THE ANGLES AT ALL LOT CORNERS ARE 90°.

LEGEND

- DENOTES SET P.R.M. (PERMANENT REFERENCE MONUMENT)
- DENOTES FOUND P.R.M. (PERMANENT REFERENCE MONUMENT) RLS# 1413
- (R) DENOTES RADIAL LINE
- C DENOTES CENTER LINE
- U.E. DENOTES UTILITIES EASEMENT
- D.E. DENOTES DRAINAGE EASEMENT
- L.A.E. DENOTES LIMITED ACCESS EASEMENT
- C.B. DENOTES CHORD BEARING
- DENOTES SET P.C.P.
- L.S.E. DENOTES LIFT STATION EASEMENT

PALM BEACH TOWN COMPANY'S
PLAT NO. 3
P.B. 2 P.G. 4

BREAKERS WEST #6 49/10

0217-304