

A PLANNED UNIT DEVELOPMENT

THE TENNIS CLUB OF PALM BEACH, PLAT No. 5

IN SECTION 24, TOWNSHIP 43 SOUTH, RANGE 42 EAST, PALM BEACH COUNTY, FLORIDA

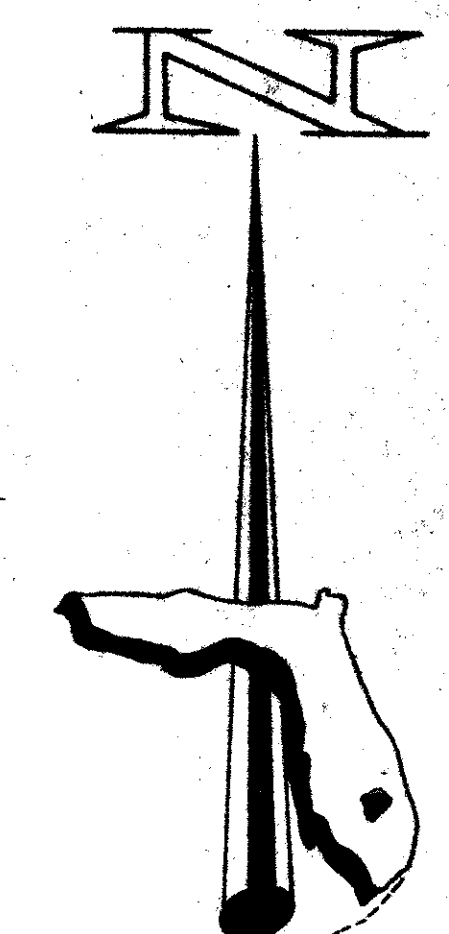
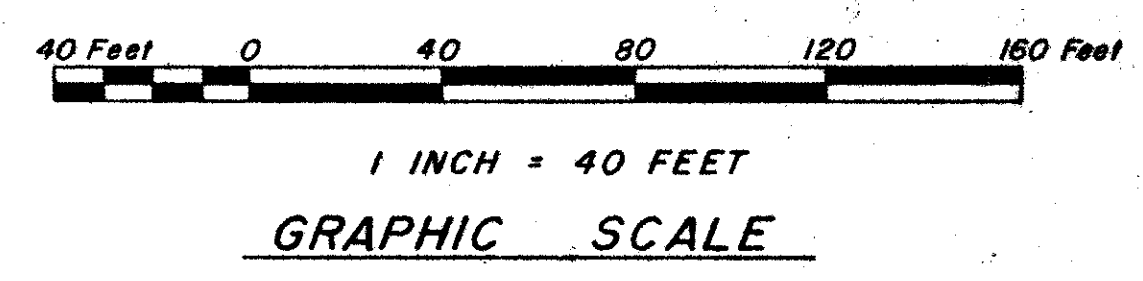
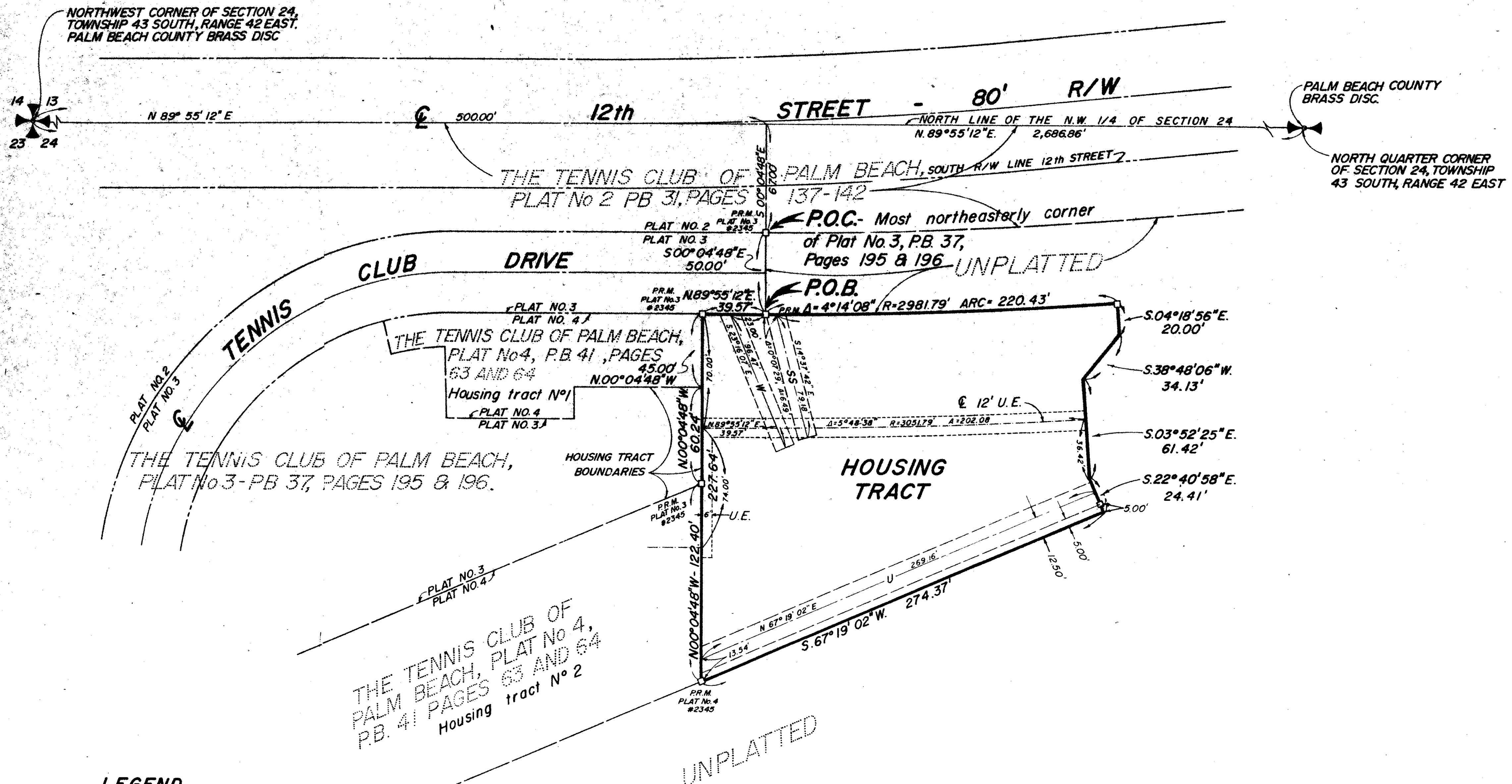
FEBRUARY 1984

48/145

DRAWING NUMBER

DRAWING NUMBER

DRAWING NUMBER



BEARING DATUM

ALL BEARINGS SHOWN HEREON ARE RELATIVE TO AN ASSUMED BEARING OF NORTH 89°55'12" EAST ALONG THE NORTH LINE OF THE NORTHWEST ONE QUARTER (NW 1/4) OF SECTION 24, TOWNSHIP 43 S. RANGE 42 E.

NOTES:

1. NO BUILDINGS OR ANY KIND OF STRUCTURES OR TREES OR SHRUBS SHALL BE PLACED WITHIN EASEMENTS.
2. DRAINAGE EASEMENTS TAKE PRECEDENCE OVER UTILITY EASEMENTS.
3. MAINTENANCE ACCESS RIGHTS ARE GRANTED OVER ALL TRACTS SHOWN HEREON FOR THE PURPOSE OF MAINTENANCE OF UTILITIES AND DRAINAGE.

LEGEND

THIS SYMBOL	INDICATES:
	12' DRAINAGE EASEMENT
	12' SANITARY SEWER EASEMENT
	12' WATER EASEMENT
	15' UTILITY EASEMENT
	PERMANENT REFERENCE MONUMENT
	PERMANENT CONTROL POINT
	12' UTILITY EASEMENT

PROPOSED DENSITY TABULATION:

PROPOSED NUMBER OF UNITS, PLAT NO. 5	= 42
TOTAL ACREAGE, PLAT NO. 5	= 1.0128
PROPOSED DENSITY, PLAT NO. 5	= 41.47 UNITS/ACRE
TOTAL NUMBER OF PLATTED UNITS, PLATS 2 THROUGH 4	= 223
TOTAL ACREAGE, PLATS 2 THROUGH 4	= 27.334
PROPOSED CUMULATIVE NUMBER OF UNITS, PLATS 2 THROUGH 5	= 265
TOTAL ACREAGE, PLATS 2 THROUGH 5	= 28.3468
PROPOSED CUMULATIVE DENSITY, PLATS 2 THROUGH 5	= 9.348 UNITS/ACRE

0317-001

48/145

IN TWO SHEETS, SHEET No. 2
FLORIDA SURVEYING & MAPPING, INC.
REGISTERED LAND SURVEYORS
WEST PALM BEACH, FLORIDA 33406

SCALE	DATE	BY	DATE
1" = 40'	FEBRUARY 1984	J.P.	

THE TENNIS CLUB OF PALM BEACH, PLAT No. 5 1.83-216