

48/83

A PLANNED UNIT DEVELOPMENT THE TENNIS CLUB OF PALM BEACH, PLAT No. 7

IN SECTION 24, TOWNSHIP 43, SOUTH, RANGE 42, EAST, PALM BEACH COUNTY, FLORIDA

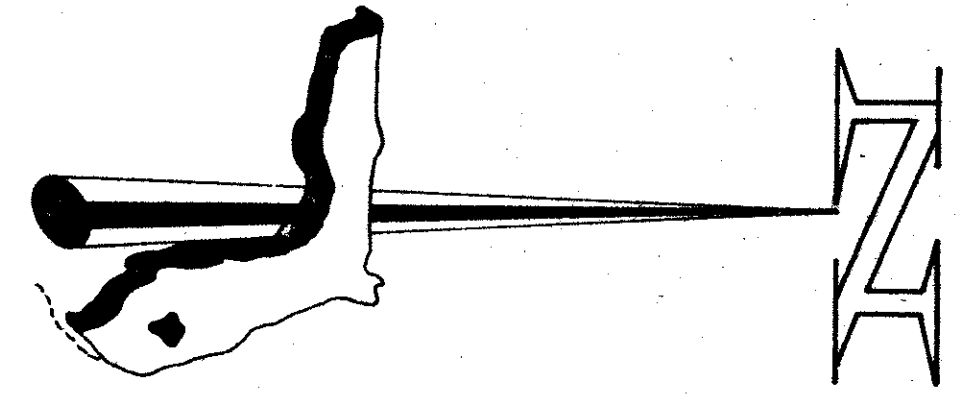
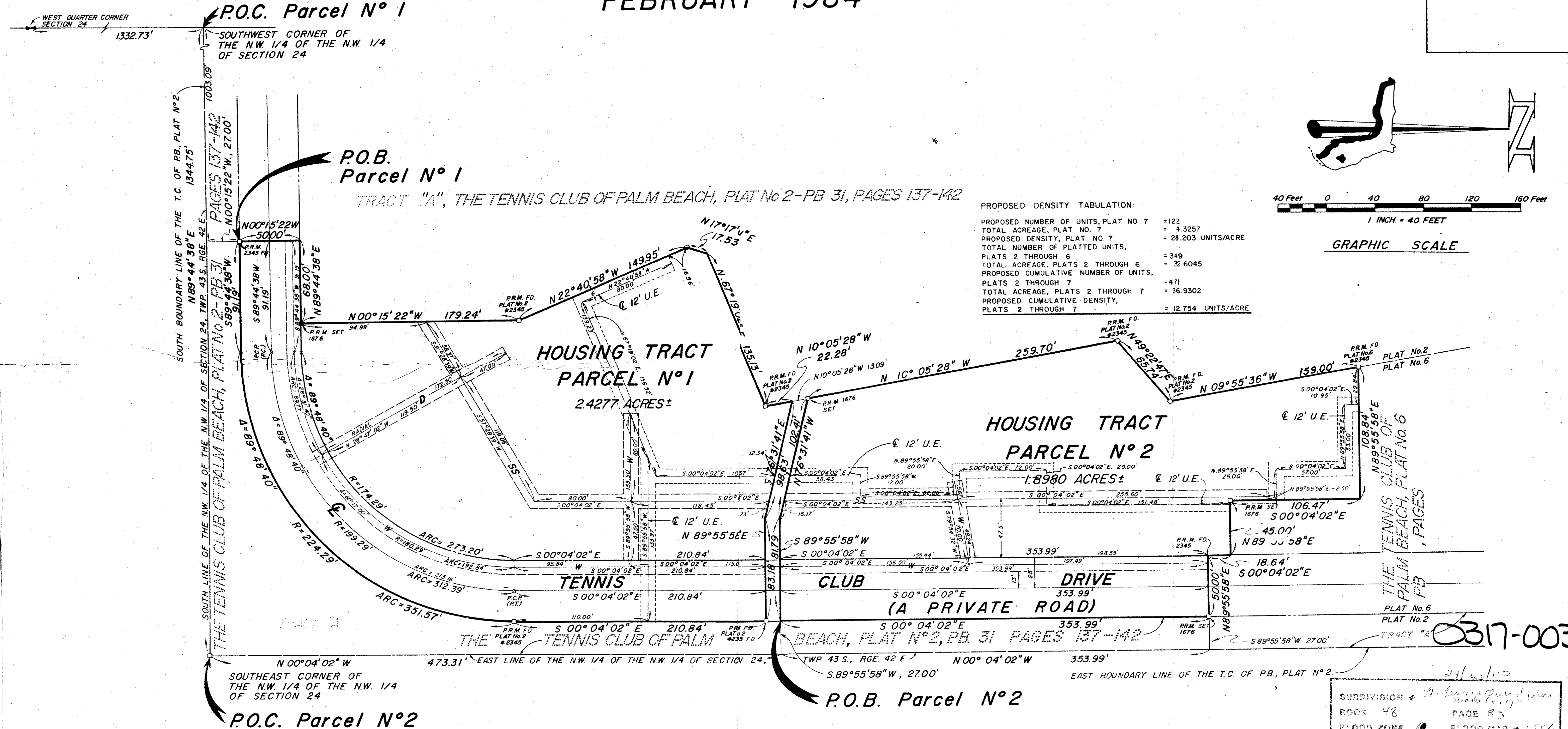
FEBRUARY 1984

DRAWING NUMBER

DRAWING NUMBER

DRAWING NUMBER

PLAN HOLD CORPORATION • IRVINE, CALIFORNIA



PROPOSED DENSITY TABULATION:

PROPOSED NUMBER OF UNITS, PLAT NO. 7	= 122
TOTAL ACREAGE, PLAT NO. 7	= 4.3257
PROPOSED DENSITY, PLAT NO. 7	= 28.203 UNITS/ACRE
TOTAL NUMBER OF PLATTED UNITS, PLATS 2 THROUGH 6	= 349
TOTAL ACREAGE, PLATS 2 THROUGH 6	= 32.6045
PROPOSED CUMULATIVE NUMBER OF UNITS, PLATS 2 THROUGH 7	= 471
TOTAL ACREAGE, PLATS 2 THROUGH 7	= 36.9302
PROPOSED CUMULATIVE DENSITY, PLATS 2 THROUGH 7	= 12.754 UNITS/ACRE

GRAPHIC SCALE

BEARING DATUM

ALL BEARINGS SHOWN HEREON ARE RELATIVE TO AN ASSUMED BEARING OF NORTH 00° 04' 02" WEST ALONG THE EAST LINE OF THE NORTHWEST ONE-QUARTER OF THE NORTHWEST ONE-QUARTER OF SECTION 24, TOWNSHIP 43 SOUTH, RANGE 42 EAST

LEGEND

THIS SYMBOL	INDICATES:
—D—	12' DRAINAGE EASEMENT
—SS—	12' SANITARY SEWER EASEMENT
—W—	12' WATER EASEMENT
—U—	15' UTILITY EASEMENT
□ P.R.M.	PERMANENT REFERENCE MONUMENT
○ P.C.P.	PERMANENT CONTROL POINT
---	12' UTILITY EASEMENT

- NOTES**
- NO BUILDINGS OR ANY KIND OF STRUCTURES OR TREES OR SHRUBS SHALL BE PLACED WITHIN EASEMENTS.
 - DRAINAGE EASEMENTS TAKE PRECEDENCE OVER UTILITY EASEMENTS.
 - MAINTENANCE ACCESS RIGHTS ARE GRANTED OVER ALL TRACTS SHOWN HEREON FOR THE PURPOSE OF MAINTENANCE OF UTILITIES AND DRAINAGE.

SUBDIVISION: *The Tennis Club of Palm Beach, Inc.*
 BOOK: 48 PAGE: 83
 FLOOD ZONE: FLOOD MAP # 1554
 ZONING: *RC-1*
 E: *384*

IN TWO SHEETS, SHEET No. 2.

FLORIDA SURVEYING & MAPPING, INC.
 REGISTERED LAND SURVEYORS
 WEST PALM BEACH, FLORIDA 33406

REVISIONS: *1* BY: *J.P.* DATE: *2/1/84*

NO. 183-217
 D.2

0317-003

48/83