

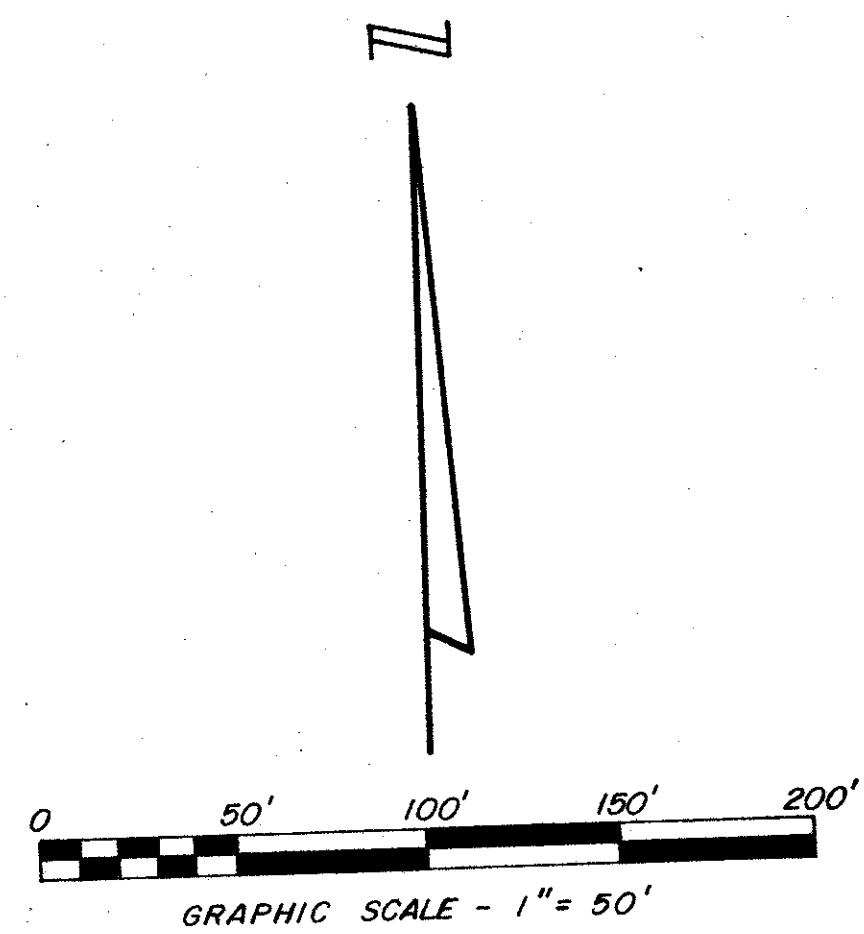
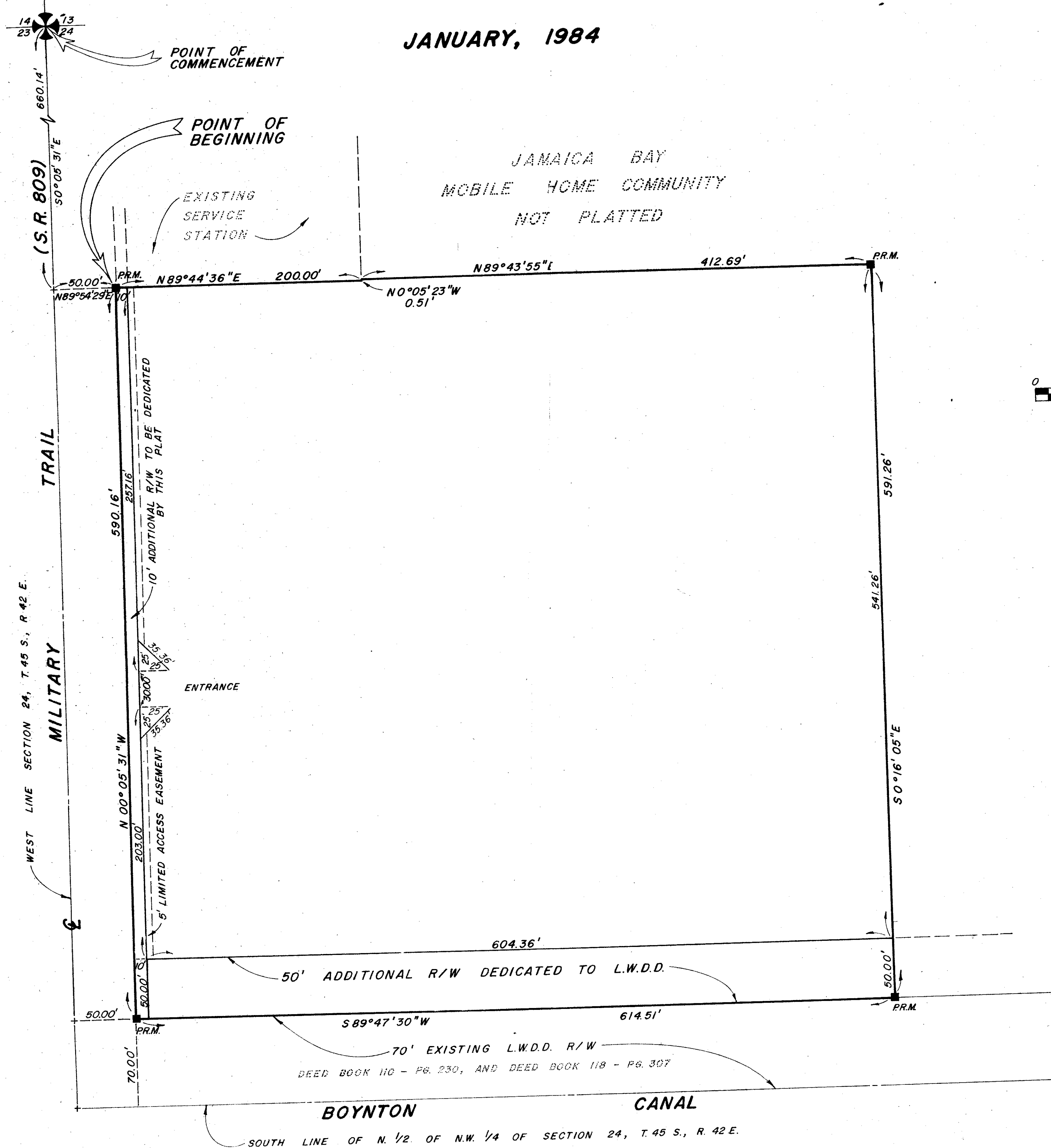
# LA PALOMA - PLAT NO. 1

IN SECTION 24, TOWNSHIP 45 SOUTH, RANGE 42 EAST

PALM BEACH COUNTY, FLORIDA

JANUARY, 1984

STATE OF FLORIDA } ss  
 COUNTY OF PALM BEACH }  
 This Plat was filed for record at \_\_\_\_\_ M.  
 this \_\_\_\_\_ day of \_\_\_\_\_  
 19 \_\_\_\_\_, and duly recorded in Plat Book No. \_\_\_\_\_  
 on page \_\_\_\_\_  
 JOHN B. DUNKLE, Clerk Circuit Court  
 By \_\_\_\_\_, D.C.



FUTURE  
 LA PALOMA  
 MOBILE HOME COMMUNITY  
 NOT PLATTED

4000-050

48/76

THIS INSTRUMENT WAS PREPARED BY JOSEPH M. TUCKER IN THE OFFICES OF  
 ROSSI AND MALAVASI ENGINEERS, INC., 1675 PALM BEACH LAKES BLVD.  
 WEST PALM BEACH, FLORIDA 33401.  
 PHONE: 737-6546

|   |               |                               |           |
|---|---------------|-------------------------------|-----------|
| <b>ROSSI AND MALAVASI ENGINEERS, INC.</b> |               | <b>LA PALOMA - PLAT NO. 1</b> |           |
| WEST PALM BEACH, FLORIDA                  |               | PALM BEACH COUNTY, FLORIDA    |           |
| IN 2 SHEETS SHEET NO. 2                   |               |                               |           |
| Date                                      | JANUARY, 1984 | Scale                         | 1" = 50'  |
| Designed                                  | R. ANDERSON   | Job No.                       | 3279-83   |
| Drawn                                     | C. GOSS       | File No.                      | S-1287-00 |
| Checked                                   |               | Sheet                         | 2 of 2    |

DRAWING NUMBER  
48/76

DRAWING NUMBER

DRAWING NUMBER

DRAWING NUMBER

PLAN HOLD CORPORATION - IRVINE, CALIFORNIA  
 PLAN HOLD CORPORATION - IRVINE, CALIFORNIA  
 PLAN HOLD CORPORATION - IRVINE, CALIFORNIA  
 PLAN HOLD CORPORATION - IRVINE, CALIFORNIA