

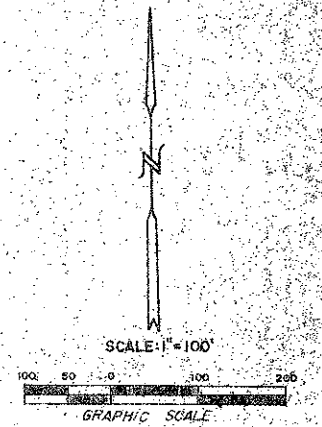
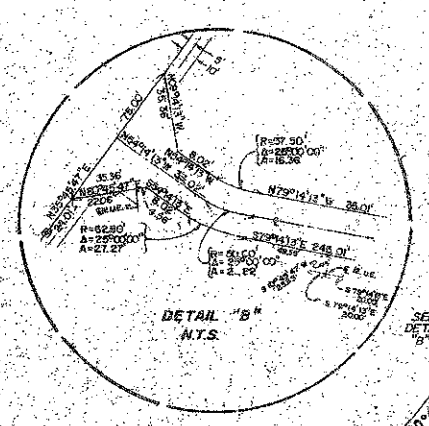
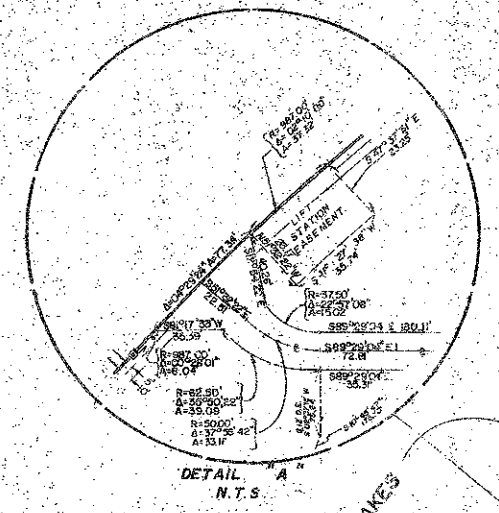
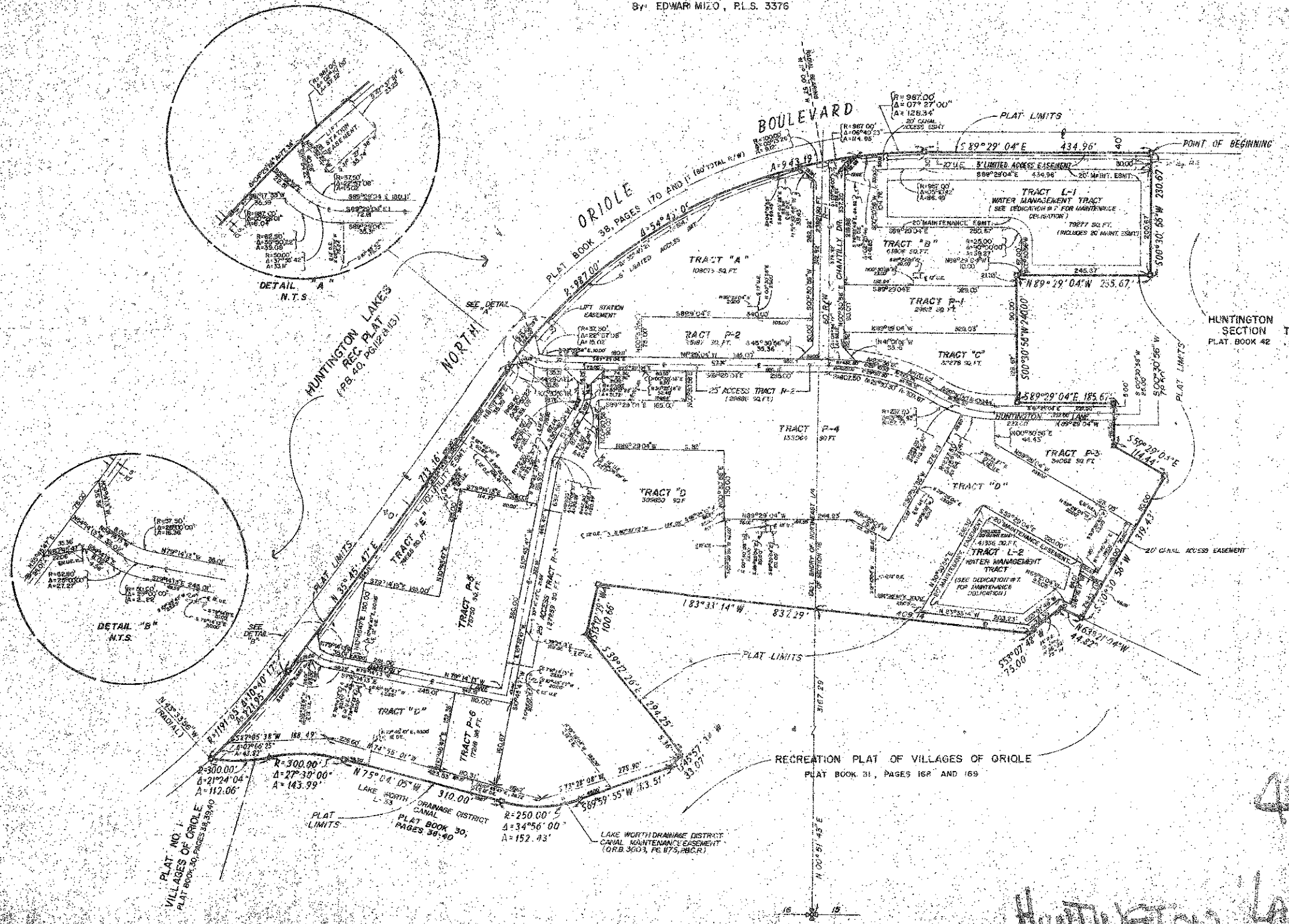
48/58

HUNTINGTON LAKES SECTION THREE

A PART OF A P.U.D.
BEING A REPLAT OF A PORTION OF TRACT "B" PLAT No. 1
VILLAGES OF ORIOLE (P.B. 30, PAGES 38, 39 & 40)
SECTIONS 15 & 16, TOWNSHIP 46 SOUTH, RANGE 42 EAST
PALM BEACH COUNTY, FLORIDA

PREPARED BY
CRAIG A. SMITH & ASSOCIATES
CONSULTING ENGINEERS & SURVEYORS
CORAL SPRINGS, FLORIDA
BY EDUAR MIZO, P.L.S. 3376

SHEET 2 of 2 SHEETS



HUNTINGTON LAKES SECTION TWO
PLAT BOOK 42, PAGE 152 B

0326-307

PM - PERMANENT REFERENCE MONUMENT
PC - PERMANENT CONTROL POINT

HUNTINGTON LAKES SECTION THREE PN