

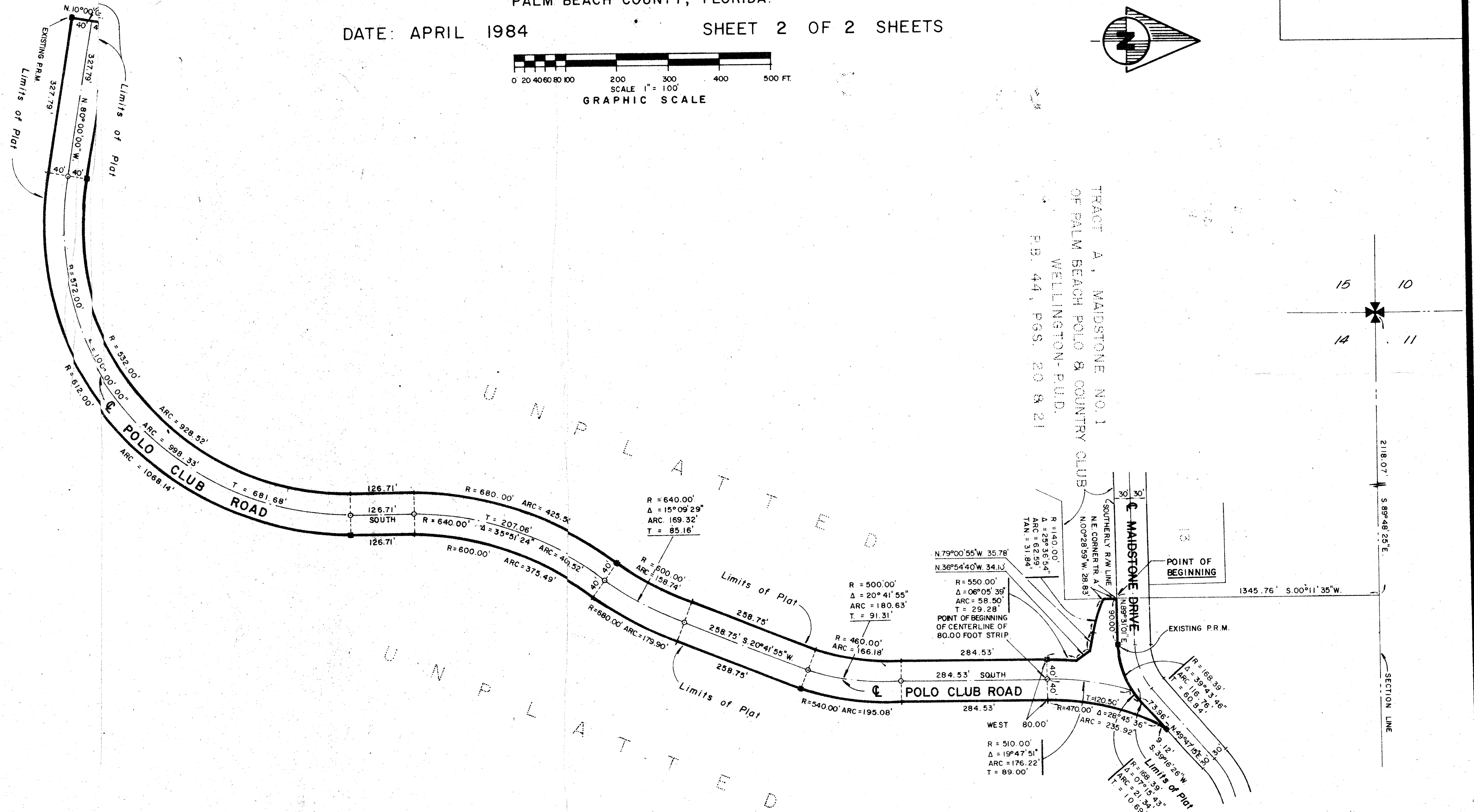
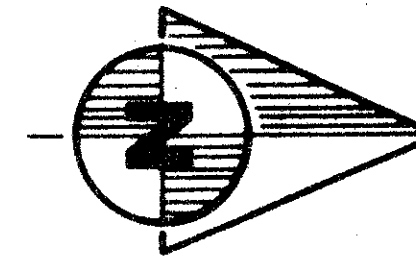
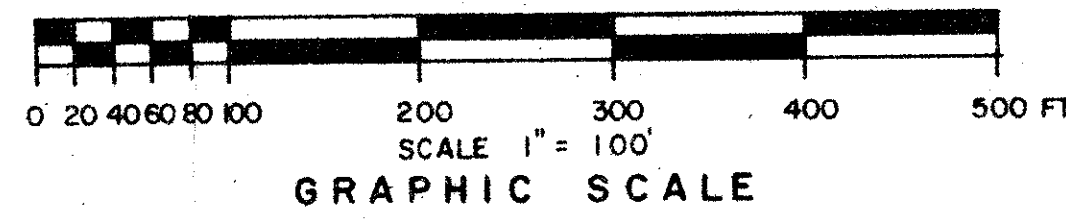
# POLO CLUB ROAD PLAT NO. 1 OF PALM BEACH POLO AND COUNTRY CLUB WELLINGTON - P.U.D.

IN PART OF SECTION 14, TWP. 44 S., RGE. 41 E.

PALM BEACH COUNTY, FLORIDA.

DATE: APRIL 1984

SHEET 2 OF 2 SHEETS



48/29

DRAWING NUMBER

DRAWING NUMBER

DRAWING NUMBER

PLAN HOLD CORPORATION • IRVINE, CALIFORNIA  
RECORDED BY NUMBER 07548

PLAN HOLD CORPORATION • IRVINE, CALIFORNIA  
RECORDED BY NUMBER 07548

PLAN HOLD CORPORATION • IRVINE, CALIFORNIA  
RECORDED BY NUMBER 07548

**NOTES**  
ALL BEARINGS SHOWN HEREON ARE RELATIVE TO AN ASSUMED MERIDIAN USED THROUGHOUT WELLINGTON.  
■ DENOTES PERMANENT REFERENCE MONUMENT  
○ DENOTES PERMANENT CONTROL POINT

THIS INSTRUMENT WAS PREPARED BY:  
NICK MILLER OF DAILEY-FOTONY,  
1028 SOUTH MILITARY TRAIL,  
WEST PALM BEACH, FLORIDA

**Dailey-Fotony, inc.**  
land surveyors, planners, engineers  
1028 So Military Trail West Palm Beach, Florida 33406 Phone 305 965-8787

Polo Club Road #1 P.B.P.C.C. 29

0332-039