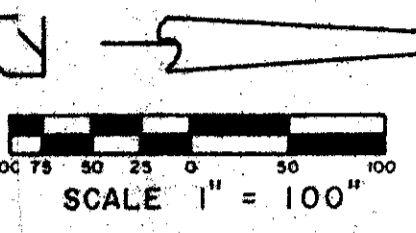


"A PLANNED UNIT DEVELOPMENT" BREAKERS WEST PLAT NO. 5

PALM BEACH COUNTY FLORIDA
SHEET 3 OF 4 SHEETS

HUTCHEON ENGINEERS
INCORPORATED
CIVIL ENGINEERS & SURVEYORS
BELLE GLADE WEST PALM BEACH STUART

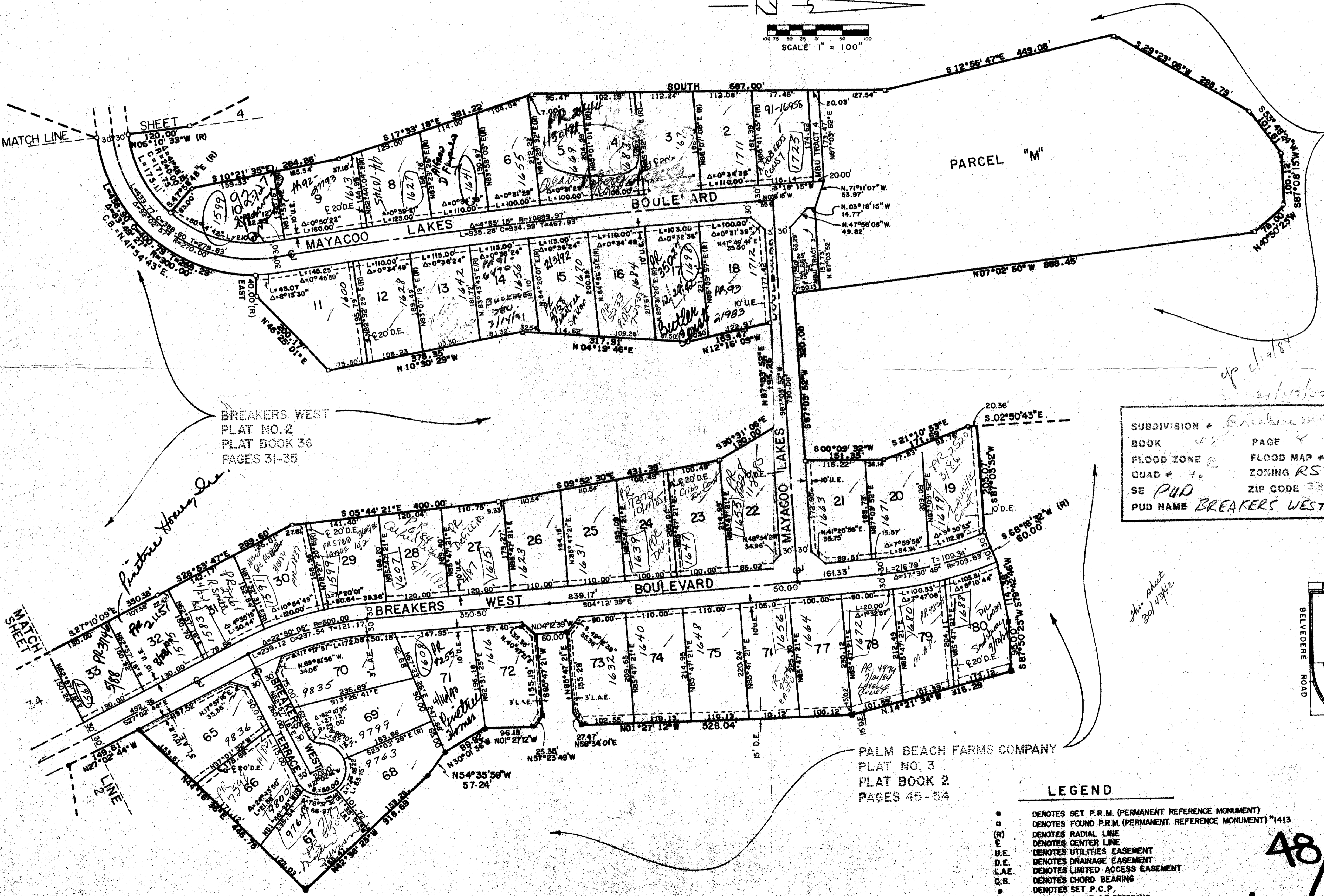


48/8
DRAWING NUMBER

DRAWING NUMBER

DRAWING NUMBER

DRAWING NUMBER



BREAKERS WEST
PLAT NO. 2
PLAT BOOK 36
PAGES 31-35

SURVEYOR'S NOTES

1. NO BUILDINGS OR ANY KIND OF CONSTRUCTION SHALL BE PLACED ON UTILITY OR DRAINAGE EASEMENTS.
2. NO STRUCTURES, TREES OR SHRUBS SHALL BE PLACED ON DRAINAGE EASEMENTS.
3. APPROVAL OF LANDSCAPING ON UTILITY EASEMENTS OTHER THAN WATER OR SEWER SHALL BE ONLY WITH APPROVAL OF ALL UTILITIES OCCUPYING SAME.
4. BEARINGS SHOWN HEREON ARE BASED ON AN ASSUMED BEARING ON N. 89°57'43" W. FOR THE NORTH LINE OF TRACT 13, BLOCK 1, PALM BEACH FARMS COMPANY, PLAT NO. 3.
5. PARCEL "M" AS SHOWN HEREON MUST BE REPLATTED PRIOR TO DEVELOPMENT OF SAID PARCEL "M".

SUBDIVISION + Breakers West
BOOK 48 PAGE 8
FLOOD ZONE FLOOD MAP # 151A
QUAD # 46 ZONING RS
SE PUD ZIP CODE 33411
PUD NAME BREAKERS WEST

PALM BEACH FARMS COMPANY
PLAT NO. 3
PLAT BOOK 2
PAGES 45-54

LEGEND

- DENOTES SET P.R.M. (PERMANENT REFERENCE MONUMENT)
- DENOTES FOUND P.R.M. (PERMANENT REFERENCE MONUMENT) *1413
- (R) DENOTES RADIAL LINE
- DENOTES CENTER LINE
- U.E. DENOTES UTILITIES EASEMENT
- D.E. DENOTES DRAINAGE EASEMENT
- L.A.E. DENOTES LIMITED ACCESS EASEMENT
- C.B. DENOTES CHORD BEARING
- DENOTES SET P.C.P.
- P.O.B. DENOTES POINT OF BEGINNING
- M&U DENOTES MAINTENANCE AND UTILITY
- L.S.E. DENOTES LIFT STATION EASEMENT

