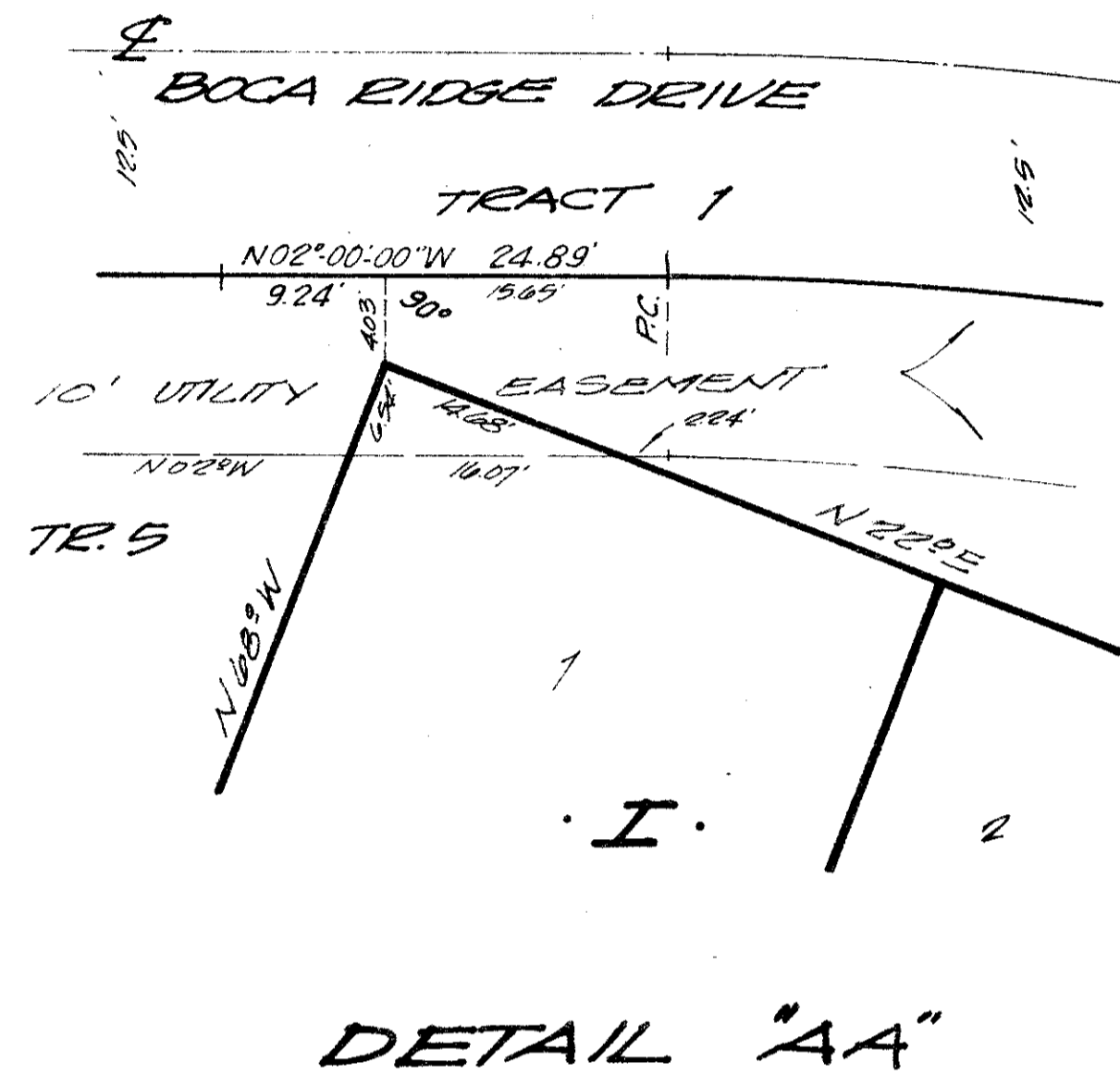
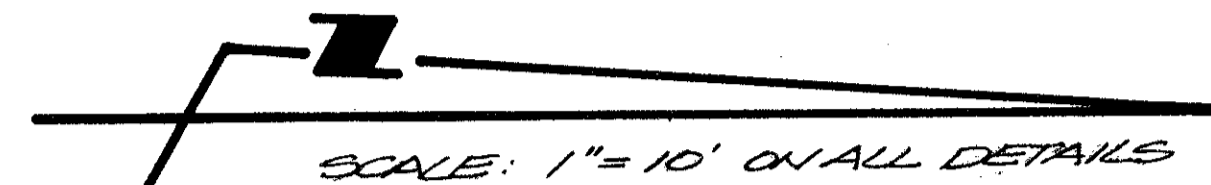


47/174

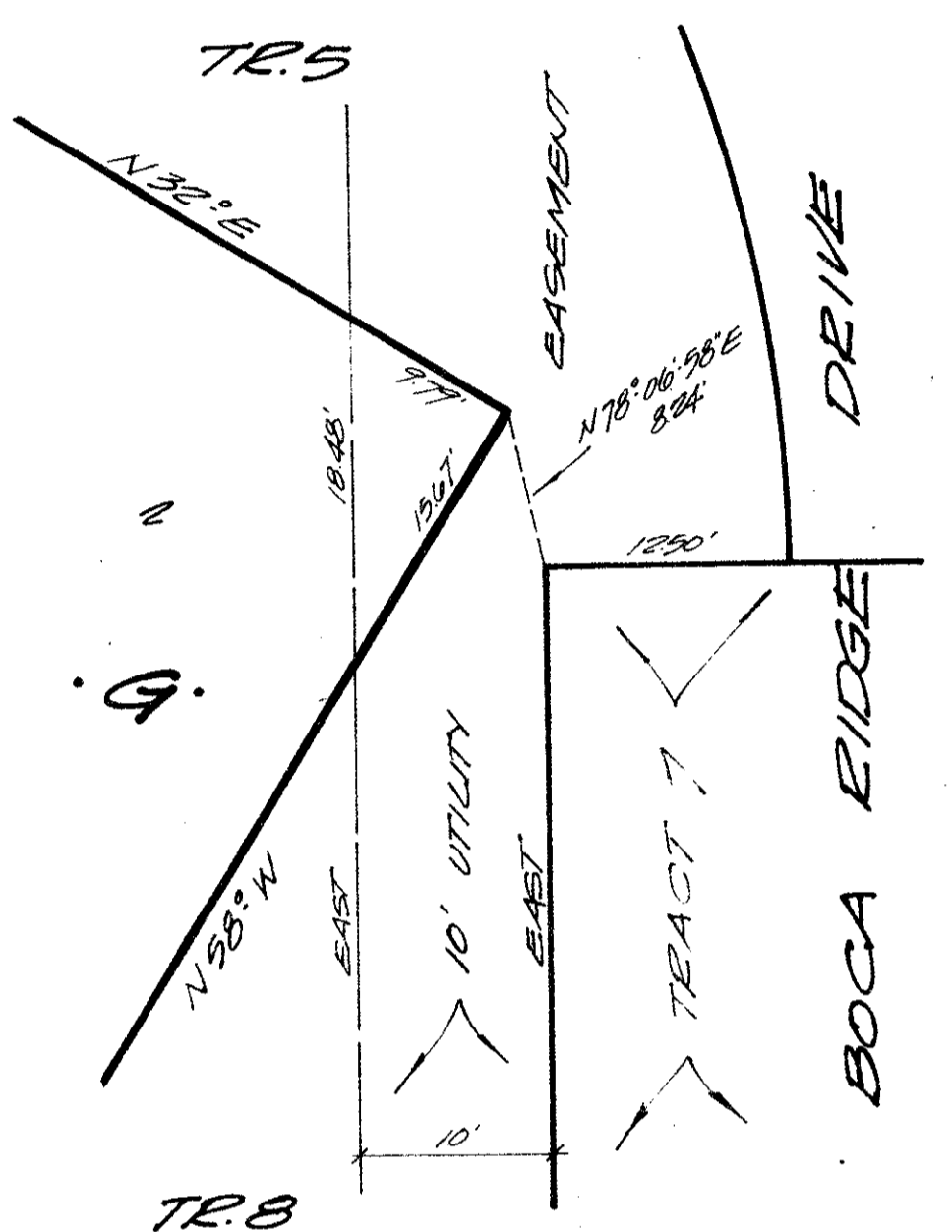
BOCA RIDGE GLEN

P. U. D.

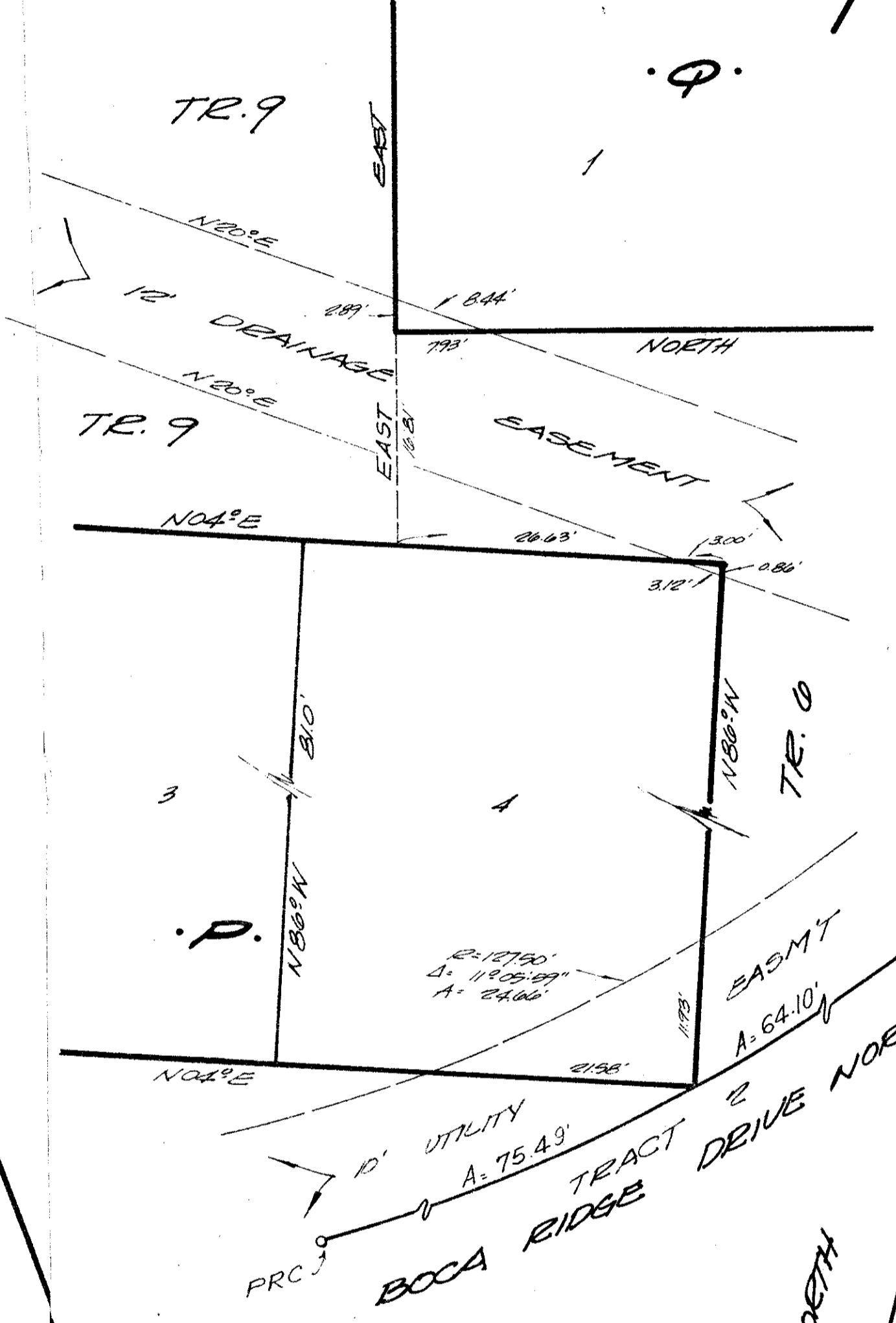
BEING IN SECTION 18, TOWNSHIP 47 SOUTH, RANGE 42 EAST, PALM BEACH COUNTY, FLORIDA.
A REPLAT OF TRACTS 103, 104, 121, 122 AND A PORTION OF 123, BLOCK 77 OF THE PLAT OF "PALM BEACH FARMS COMPANY PLAT NO. 3".
RECORDED IN PLAT BOOK 2 AT PAGES 45 THROUGH 54 OF THE PUBLIC RECORD OF PALM BEACH COUNTY, FLORIDA.



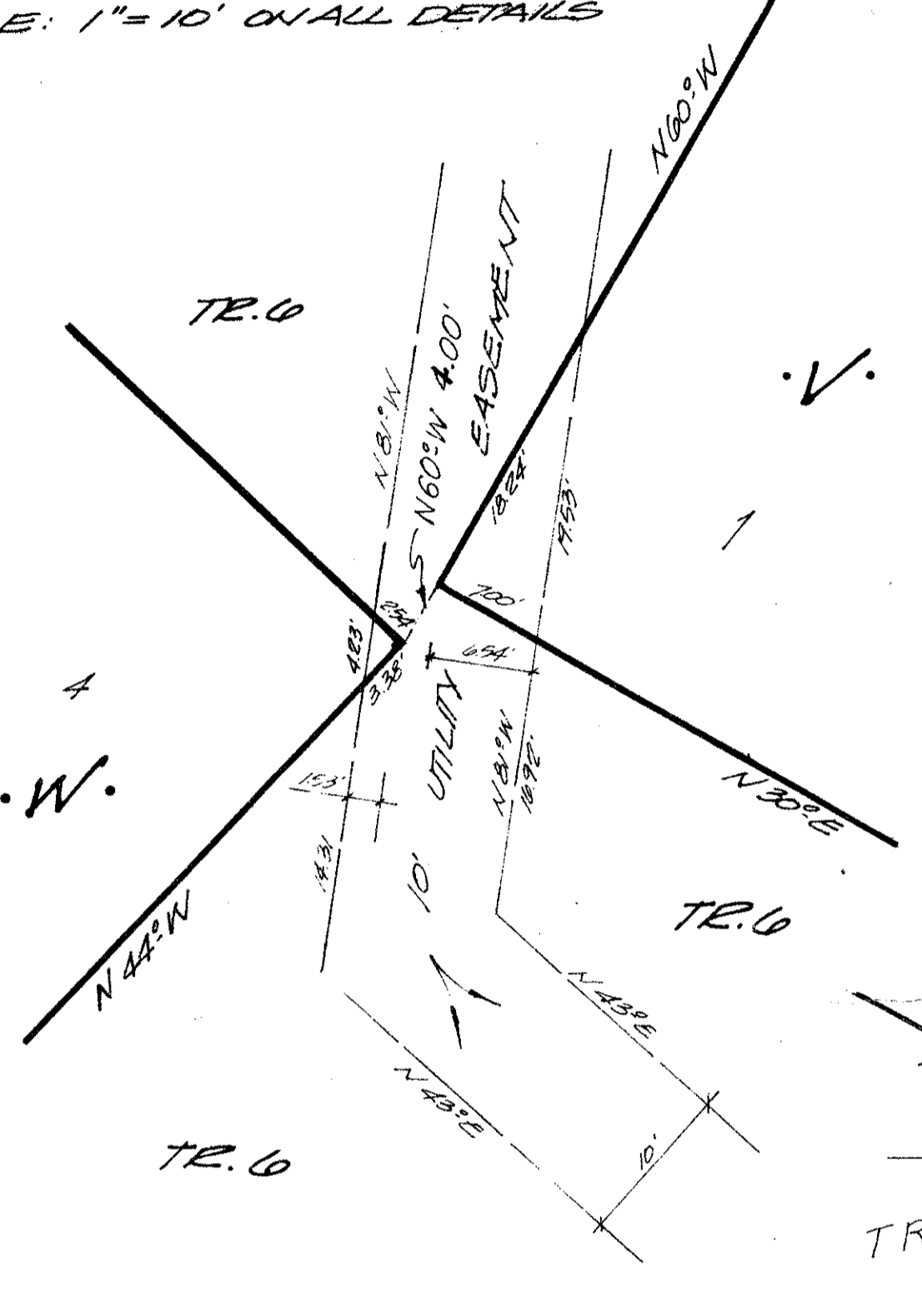
DETAIL "AA"



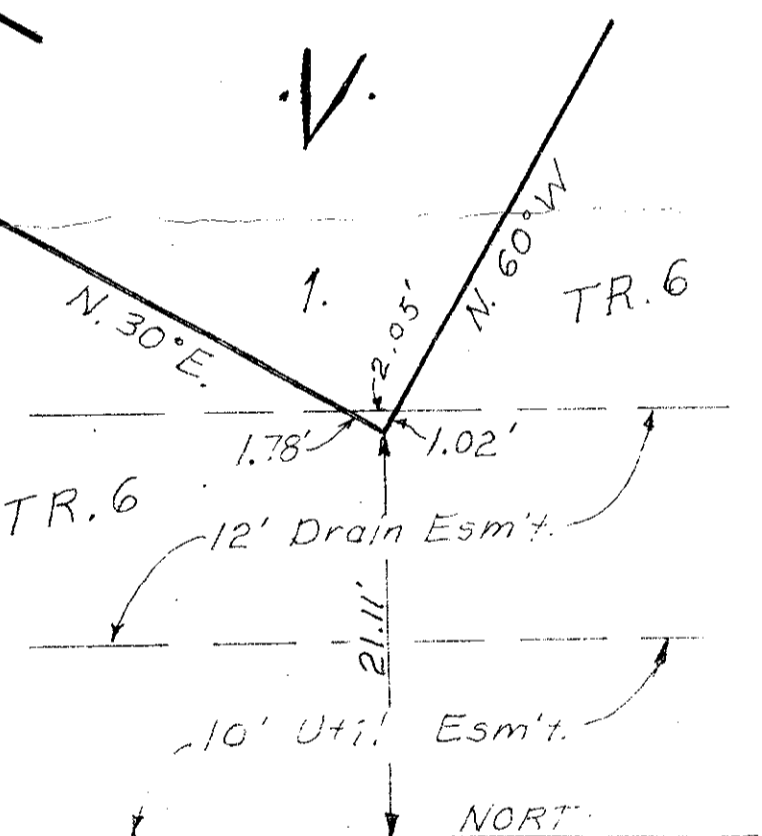
DETAIL "CC"



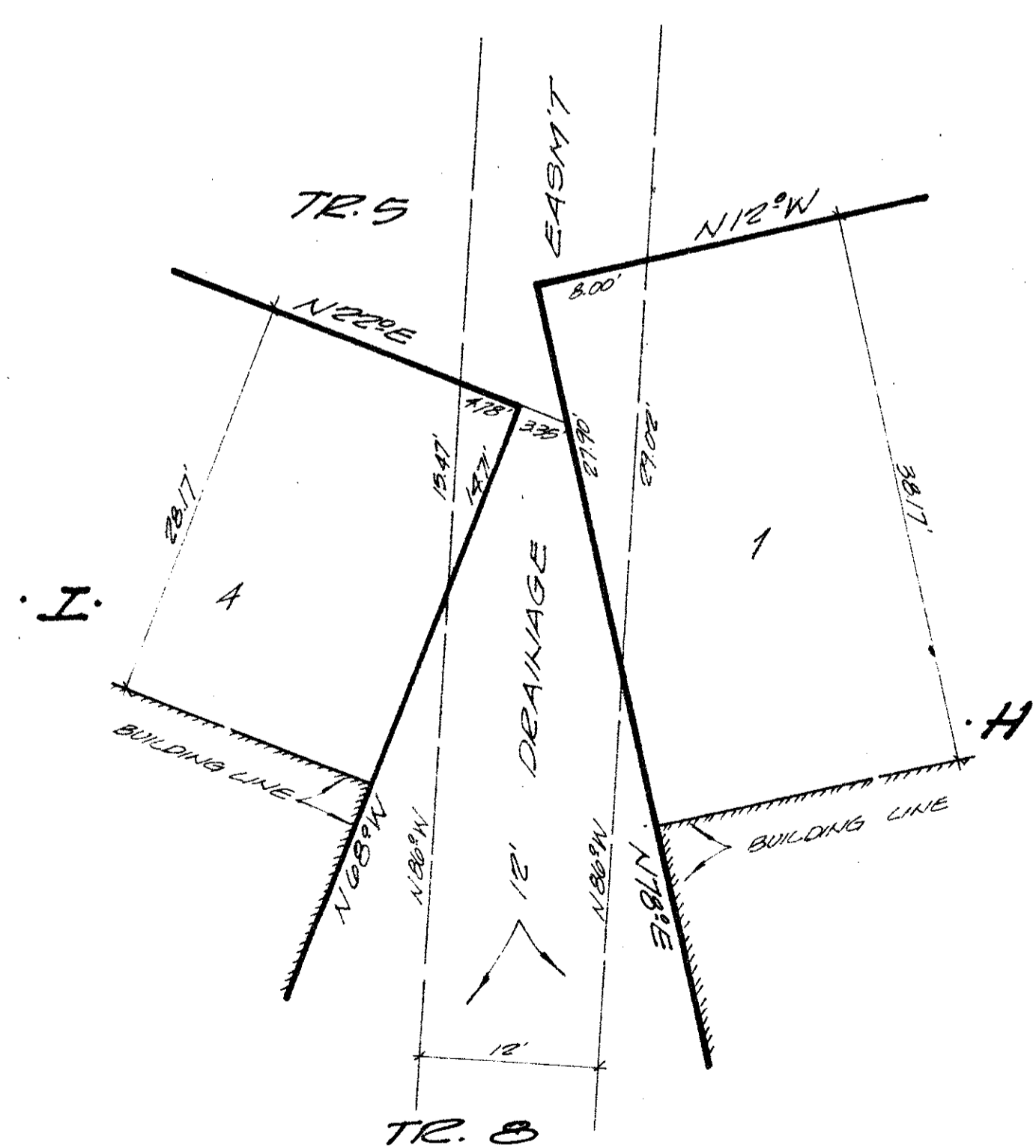
DETAIL "FF"



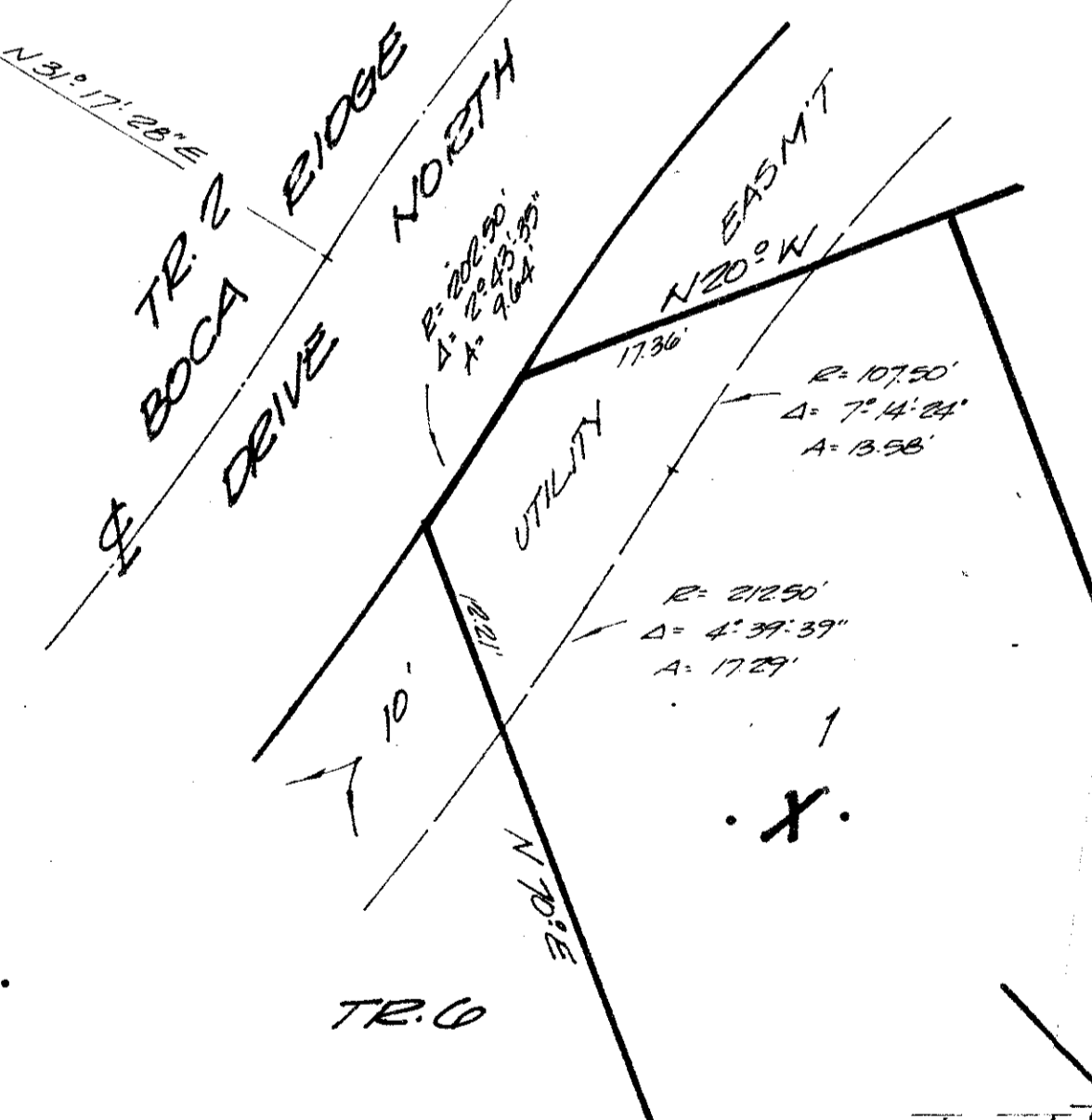
DETAIL "GG"



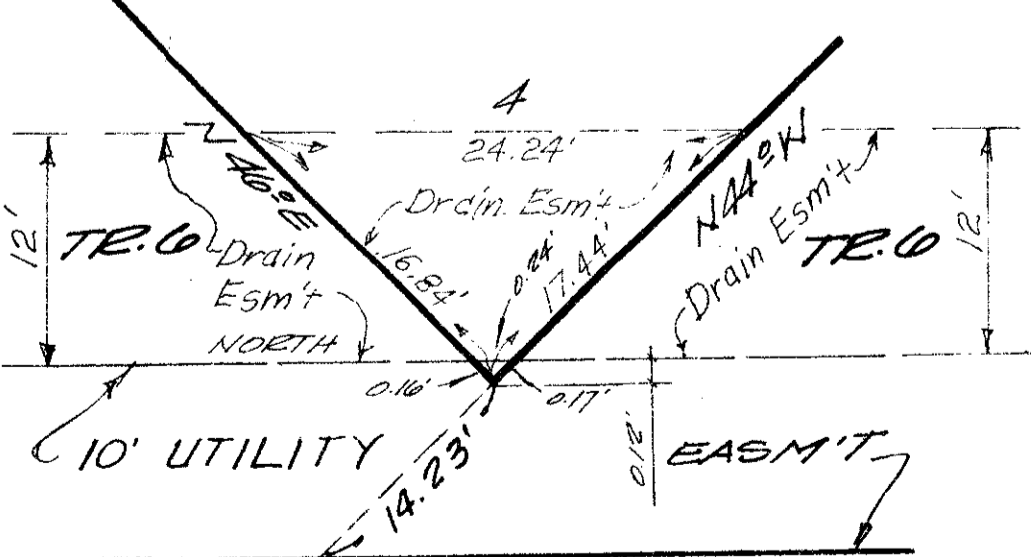
DETAIL "JJ"



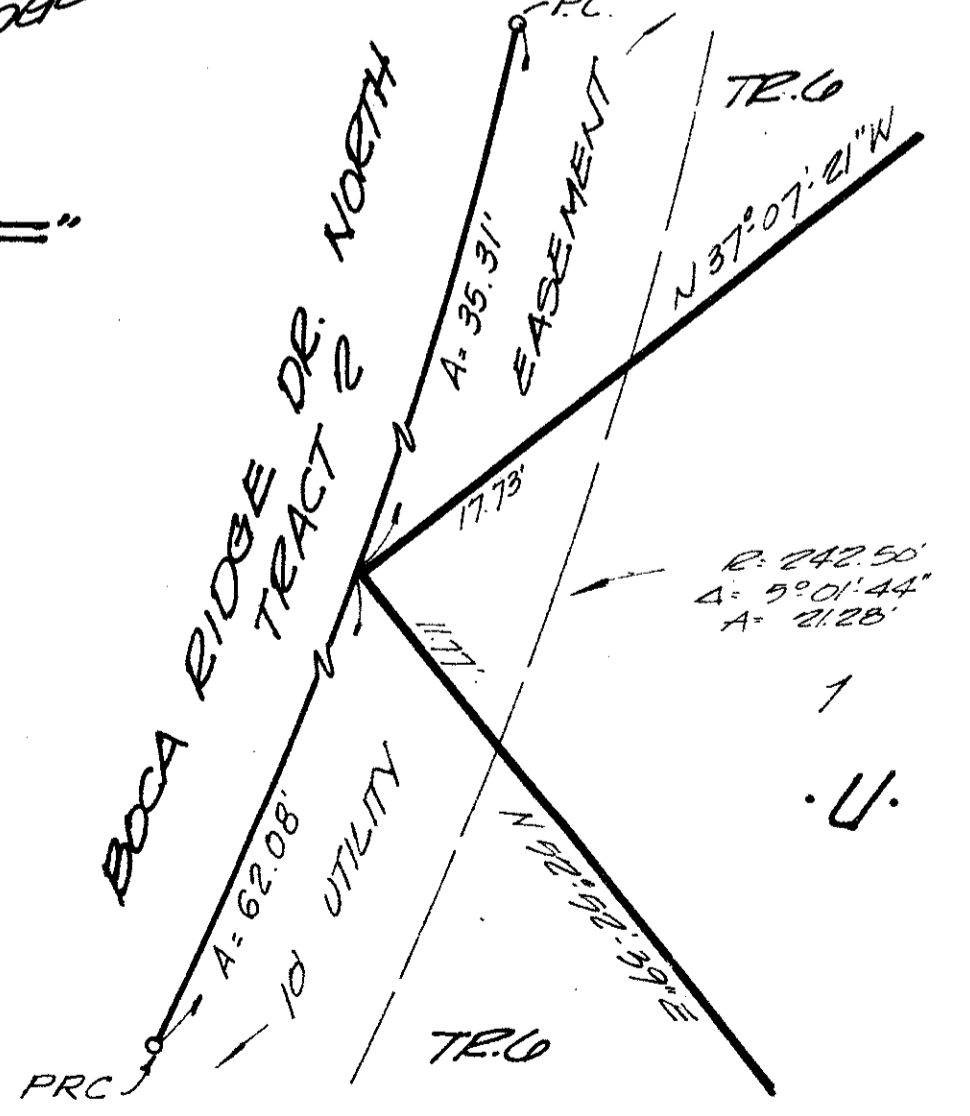
DETAIL "BB"



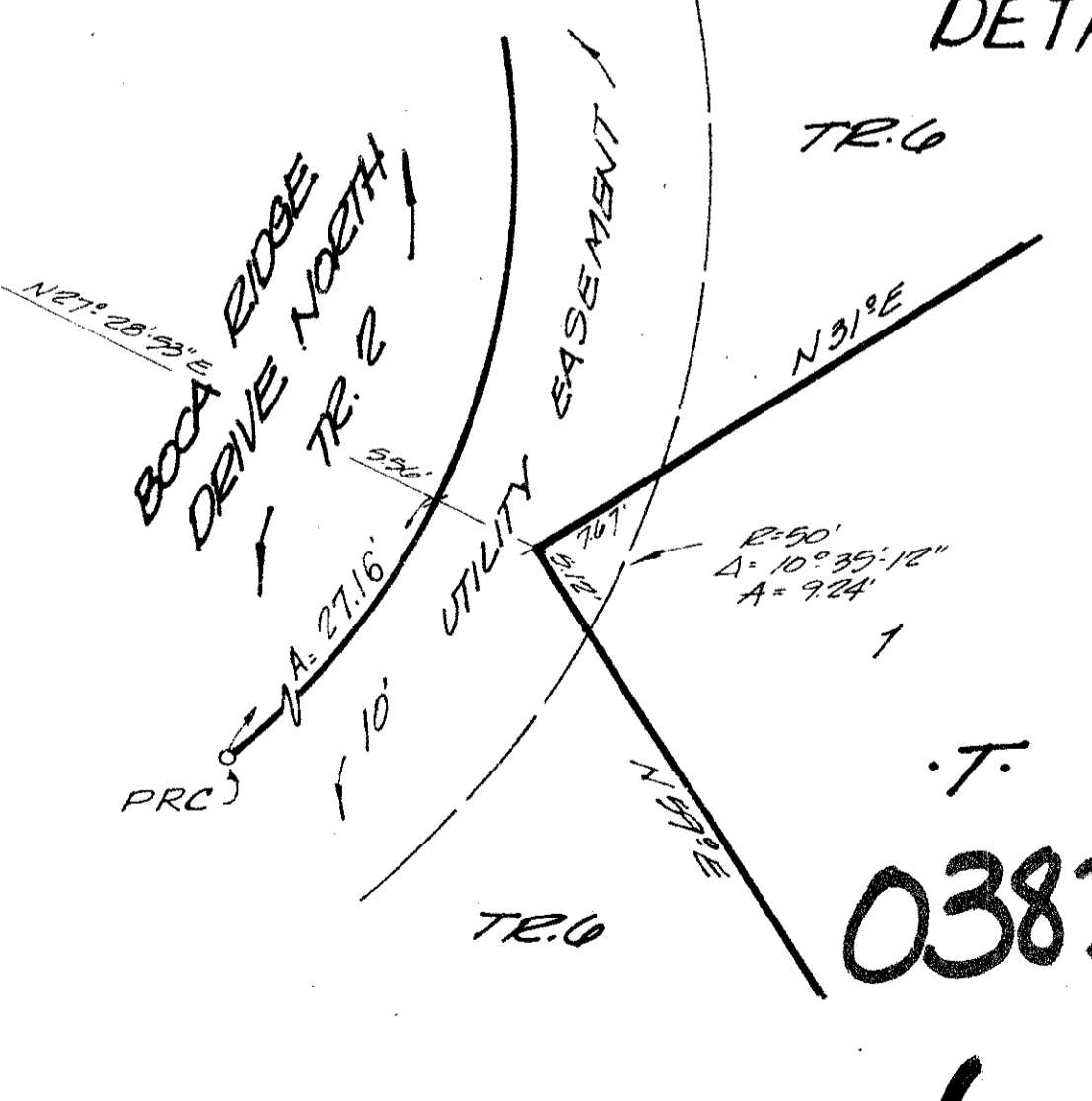
DETAIL "DD"



DETAIL "EE"



DETAIL "HH"



DETAIL "II"

0382-000

Boca Ridge Glen 47/174 SHEET 3 OF 3 SHEETS