

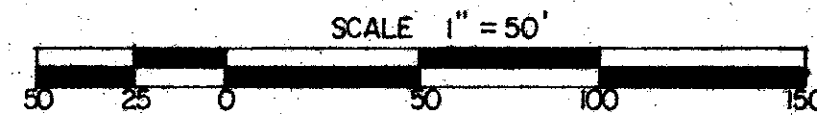
47/167

MERIDIANA AT BOCA POINTE PLAT II

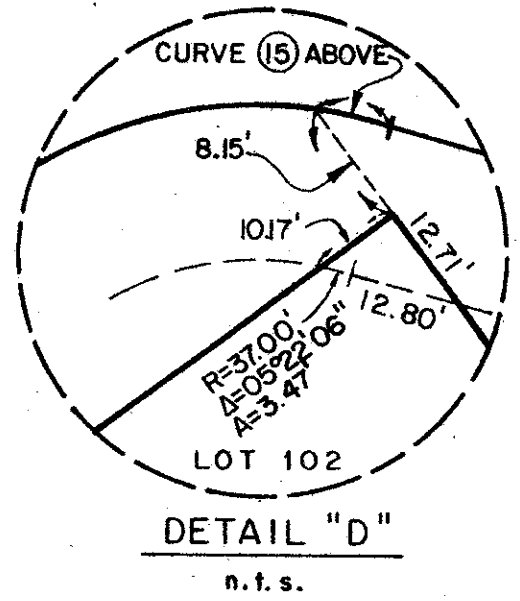
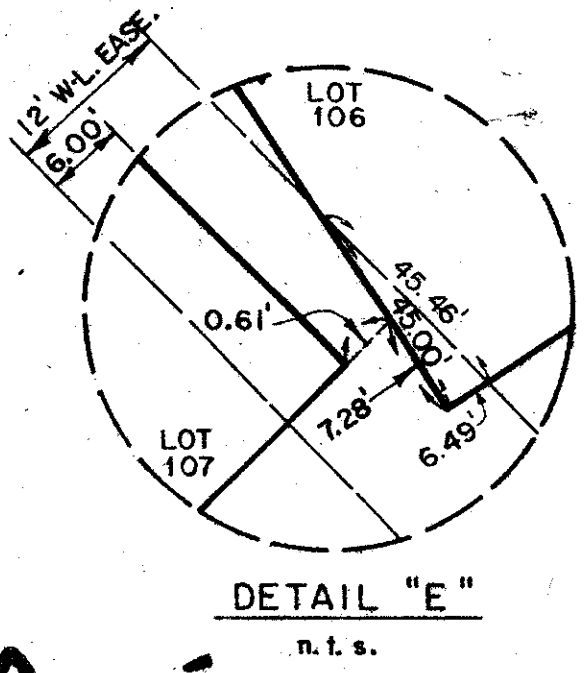
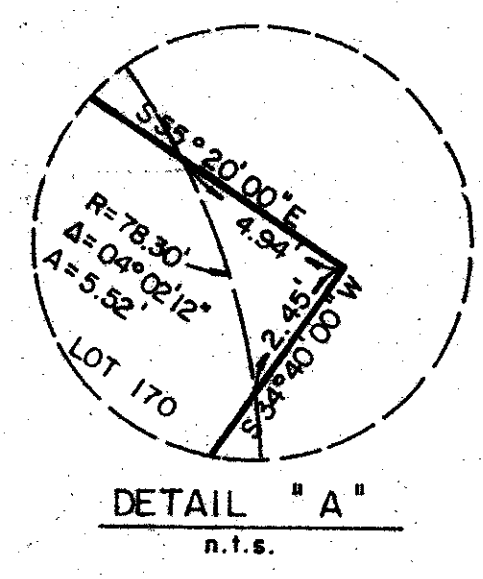
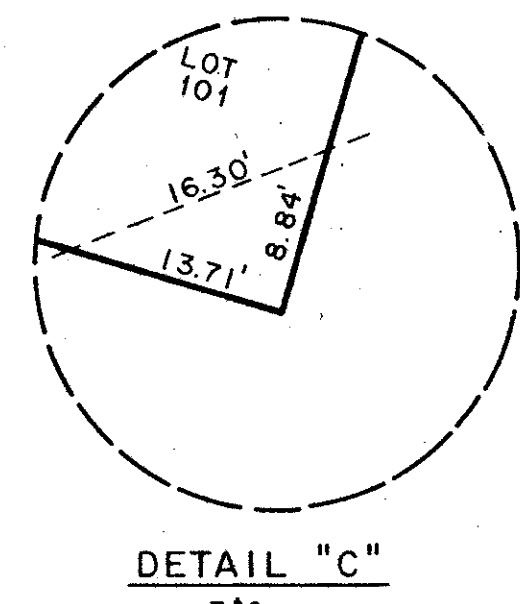
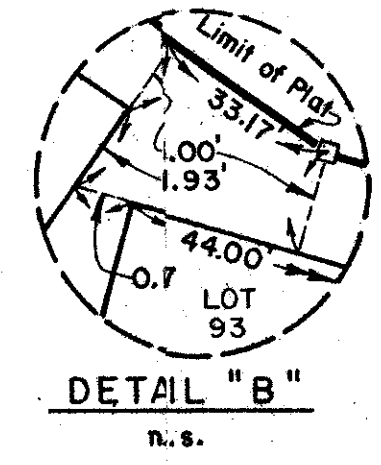
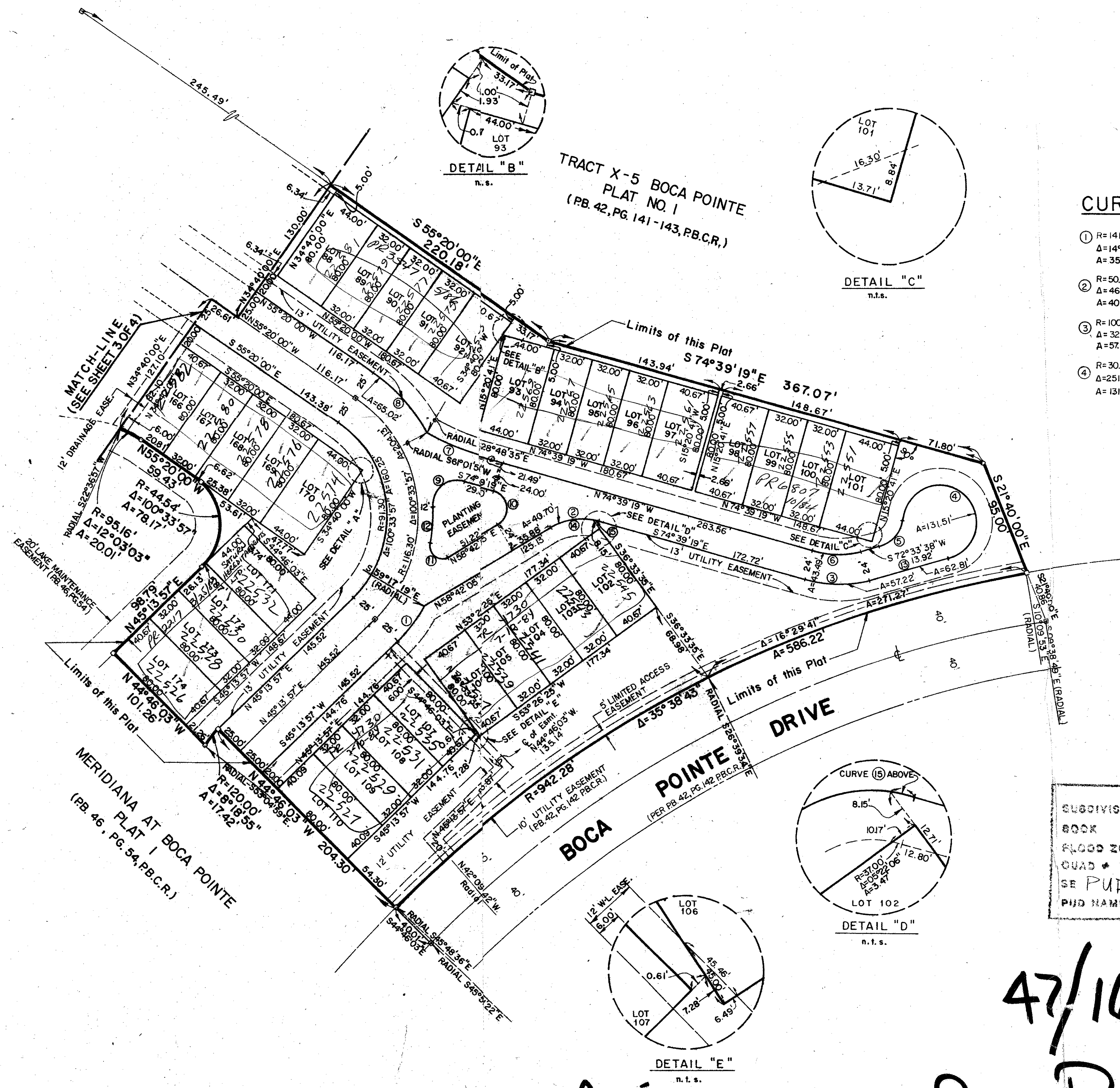
167

PART OF A P.U.D.

A REPLAT OF A PORTION OF TRACT X OF BOCA POINTE No. 1, LYING IN SECTION 28, TOWNSHIP 47 SOUTH, RANGE 42 EAST, AS RECORDED IN PLAT BOOK 42, PAGES 141 THROUGH 143 INCLUSIVE OF THE PUBLIC RECORDS OF PALM BEACH COUNTY, BEING IN PALM BEACH COUNTY, FLORIDA



SHEET 4 of 4 contains 4.8198 Ac.±



CURVE DATA for SHEET 4 of 4

① R=141.30' Δ=14°31'16" A=35.81'	⑤ R=25.00' Δ=67°26'21" A=29.43'	⑨ R=20.00' Δ=109°22'52" A=38.48'	⑬ R=967.28' Δ=0°3'43'13" A=62.81'
② R=50.00' Δ=46°38'36" A=40.70'	⑥ R=76.00' Δ=32°47'03" A=43.49'	⑩ R=15.00' Δ=133°21'24" A=34.92'	⑭ R=50.00' Δ=42°31'06" A=37.10'
③ R=100.00' Δ=32°47'03" A=57.22'	⑦ R=200.00' Δ=13°27'54" A=47.00'	⑪ R=10.00' Δ=131°01'16" A=22.87'	⑮ R=50.00' Δ=0°4'07'30" A=3.60'
④ R=30.00' Δ=251°09'33" A=131.51'	⑧ R=141.30' Δ=26°21'50" A=65.02'	⑫ R=128.30' Δ=13°45'32" A=30.81'	

29/47/42

SUBDIVISION * Meridiana *
 BOOK 47 PAGE 167
 FLOOD ZONE B FLOOD MAP # 2108
 QUAD * 54 ZONING RS
 SE PUD ZIP CODE 334733
 PHD NAME [unclear]

47/167 0211-316
 Darby and Way, Inc.
 PROFESSIONAL SURVEYORS AND ENGINEERS

MERIDIANA AT Boca Pointe PLAT II