

47/103

# PROMENADE AT BOCA POINTE NO. 2 PART OF BOCA POINTE, A P.U.D.

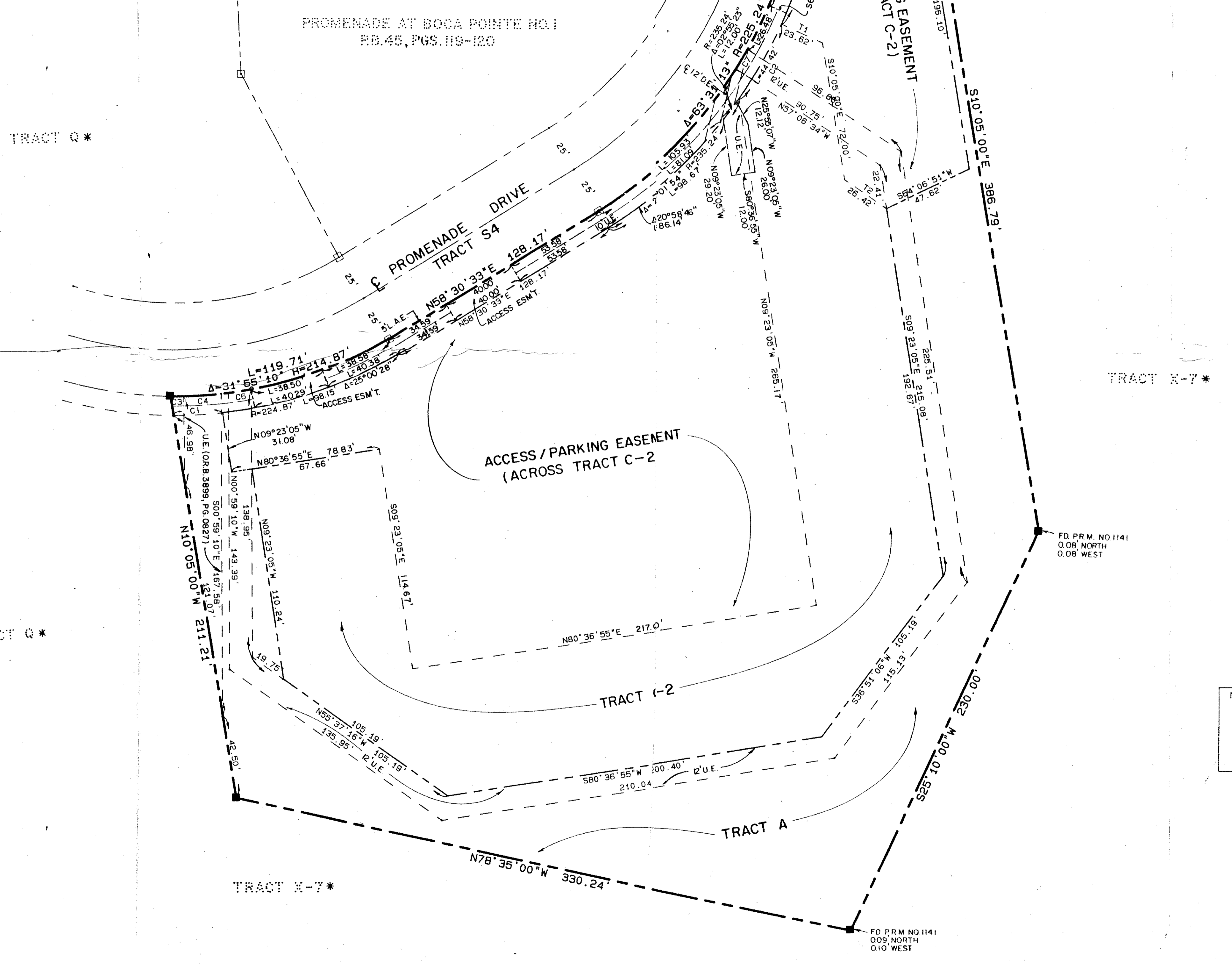
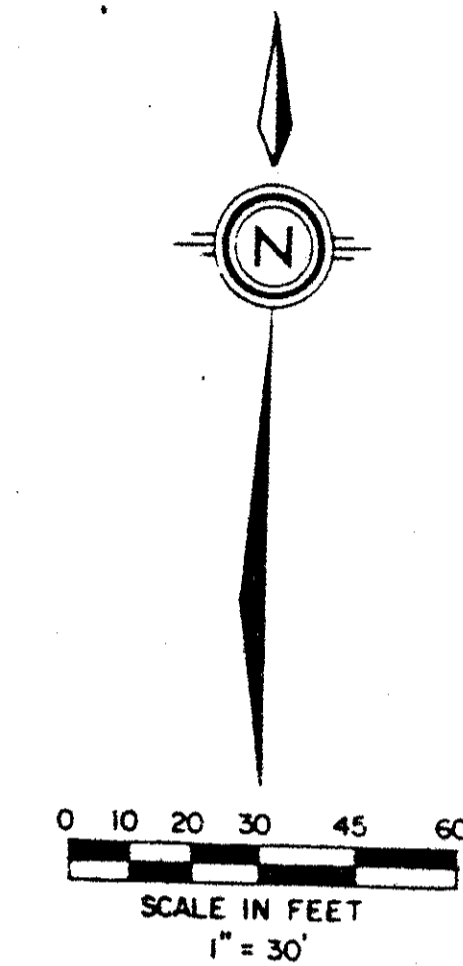
SITUATE IN SECTION 33, TOWNSHIP 47 SOUTH, RANGE 42 EAST,  
PALM BEACH COUNTY, FLORIDA, BEING A REPLAT OF A PORTION  
OF TRACT Q OF BOCA POINTE NO. 1, A P.U.D. (PLAT BOOK 42,  
PAGES 141 THROUGH 143).

JANUARY, 1984

SHEET 2 OF 2

# 103

STATE OF FLORIDA  
COUNTY OF PALM BEACH  
THIS PLAT WAS FILED FOR  
RECORD AT \_\_\_\_\_ DAY OF \_\_\_\_\_  
AD, 1984 AND DULY RECORDED  
IN PLAT BOOK \_\_\_\_\_ ON PAGES  
\_\_\_\_\_ AND \_\_\_\_\_  
JOHN B. DUNKLE, CLERK  
CIRCUIT COURT  
BY: \_\_\_\_\_, D.C.



NO.	BEARING	DISTANCE
T1	S66°20'32"E	23.62
T2	S56°38'29"E	26.42

NO.	DELTA	RADIUS	LENGTH
C1	6°26'22"	224.87	25.27
C2	10°52'46"	235.24	44.67
C3	1°54'00"	214.87	7.13
C4	5°13'20"	214.87	19.58
C5	1°00'30"	214.87	3.78
C6	3°14'04"	214.87	12.13
C7	3°03'24"	225.24	12.02

0211-315

47/103

\* REFER TO THE PLAT OF BOCA POINTE NO. 1 (P.B. 42, PGS. 141-143)

Meridian Surveying and mapping inc. WEST PALM BEACH, FLORIDA

DRAWN	M E H	DATE	JUNE, 1983
CHECKED		SCALE	1" = 30'
DRAWING NO	81-P-077	PROMENADE AT BOCA POINTE NO. 2 PART OF BOCA POINTE, A P.U.D.	