

DRAWING NUMBER
46/202

DRAWING NUMBER

DRAWING NUMBER

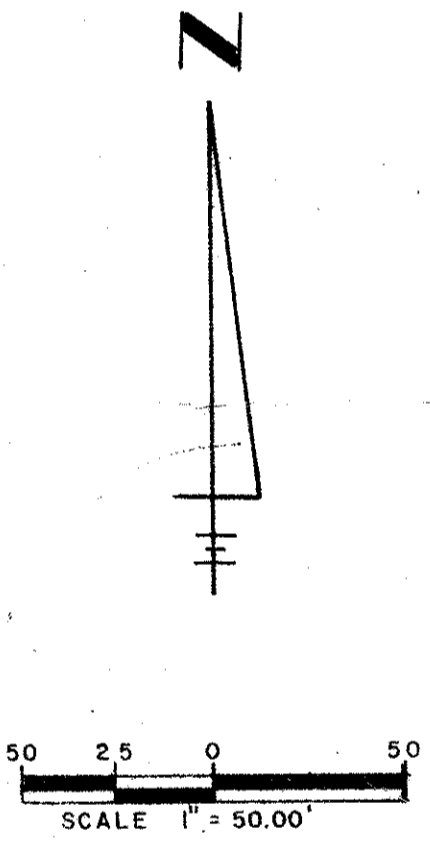
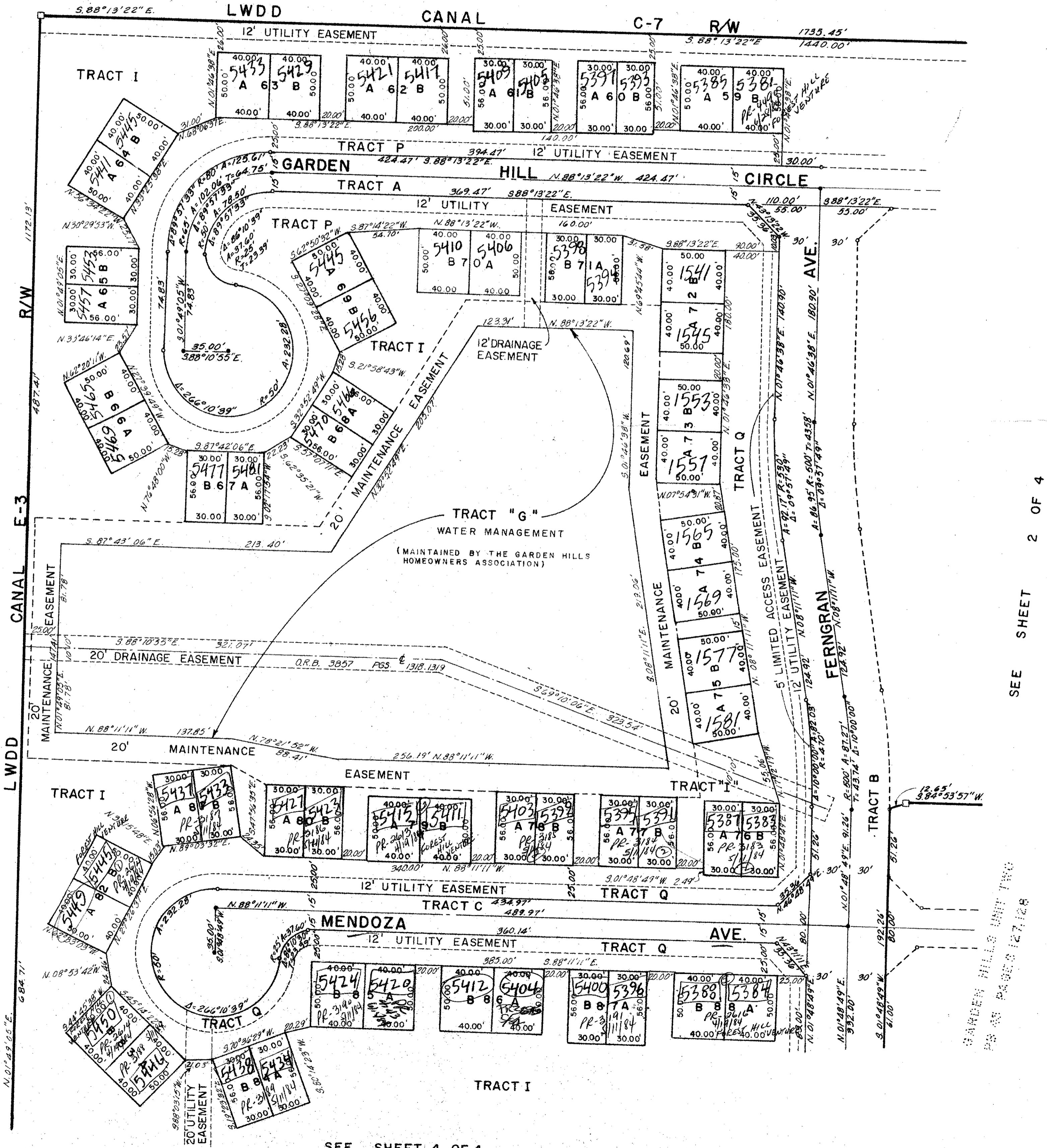
DRAWING NUMBER

202

PART OF A PLANNED UNIT DEVELOPMENT

GARDEN HILLS UNIT THREE

A REPLAT OF TRACTS G AND D OF GARDEN HILLS UNIT ONE AS RECORDED IN PLAT BOOK, 45 PAGES 2, 3 AND 4 AND A REPLAT OF TRACT C GARDEN HILLS UNIT TWO AS RECORDED IN PLAT BOOK 45 PAGES 127 AND 128 OF THE PUBLIC RECORDS OF PALM BEACH COUNTY, FLORIDA AND A SUBDIVISION IN THE NORTH 1/2 OF THE SOUTHEAST 1/4 OF SECTION 11, TOWNSHIP 44 SOUTH, RANGE 42 EAST IN PALM BEACH COUNTY, FLORIDA.
JULY 1983



SEE SHEET 2 OF 4

46/202

SUBDIVISION	11/412
BOOK	46
FLOOD ZONE	B
QUAD	32
SE	
PUD NAME	
PAGE	202
FLOOD MAP	165B
ZONING	
ZIP CODE	33406

0250-302

SEE SHEET 4 OF 4