

46/181

DRAWING NUMBER

DRAWING NUMBER

DRAWING NUMBER

A PLANNED UNIT DEVELOPMENT
ABBEY PARK PLAT NO. 3
 LYING IN THE S 1/2 OF THE SE 1/4 OF SECTION 11, TOWNSHIP 44
 SOUTH, RANGE 42 EAST, PALM BEACH COUNTY, FLORIDA
 APRIL, 1983

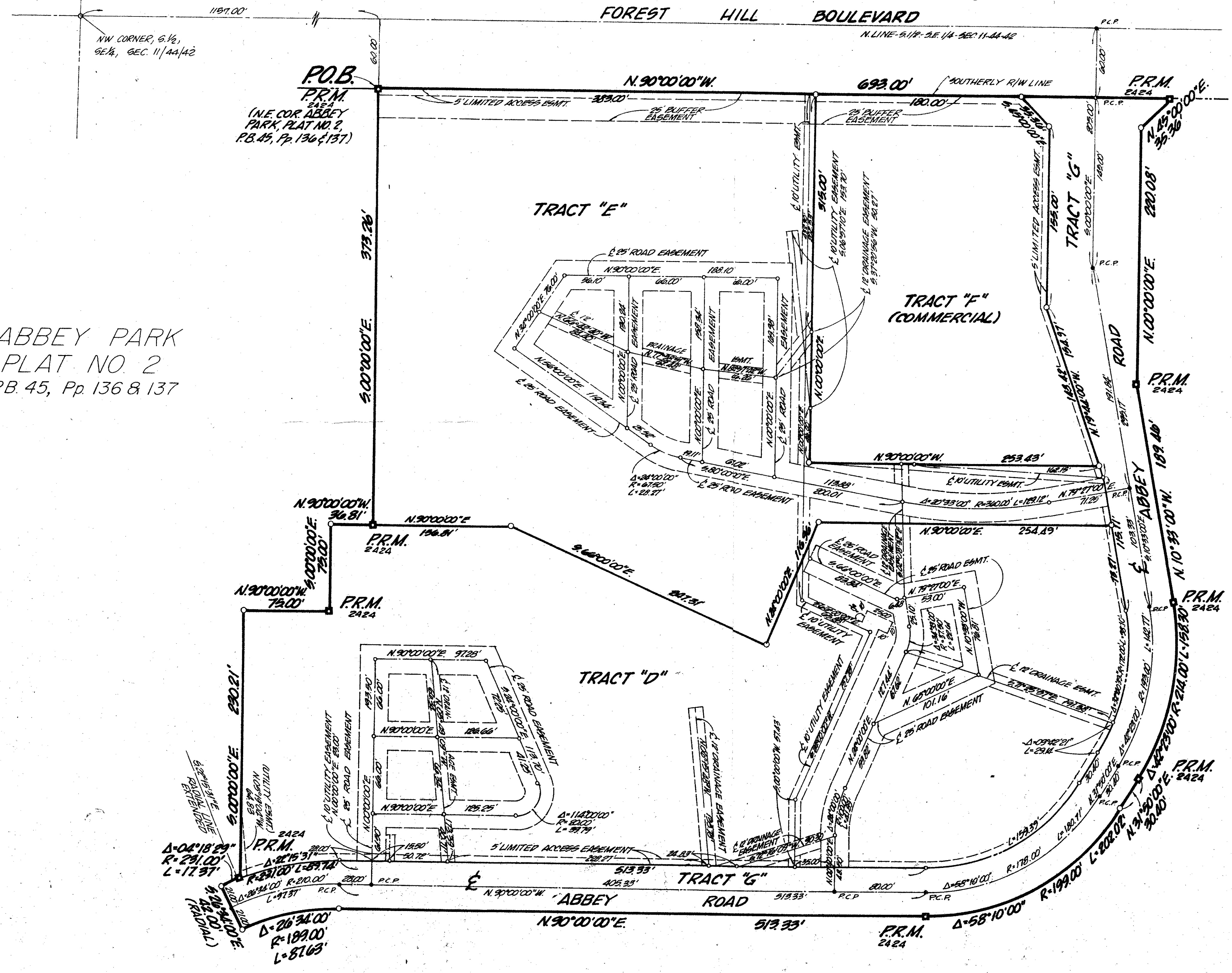
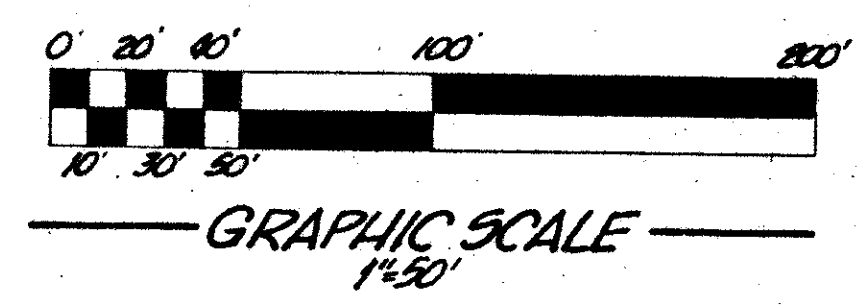
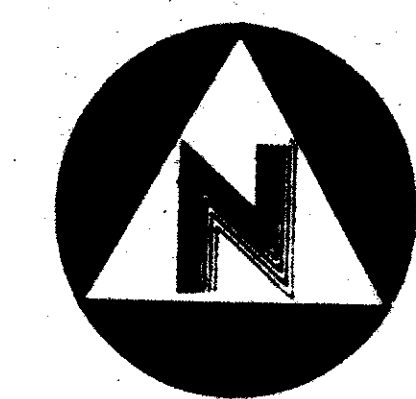
181

JOHN B. DUNKLE, CLERK
CIRCUIT COURT
BY: _____

STATE OF FLORIDA
COUNTY OF PALM BEACH

THIS PLAT WAS FILED FOR
RECORD AT _____ DAY OF
THIS _____ AD, 1983 AND
DULY RECORDED IN PLAT BOOK
_____ ON PAGES _____ AND

JOHN B. DUNKLE, CLERK
CIRCUIT COURT
BY: _____



ABBEY PARK
PLAT NO. 2
P.B. 45, Pp. 136 & 137

NOT PLATTED

NOTES:
PERMANENT REFERENCE MONUMENTS (P.R.M.'S) ARE DESIGNATED THIS: ●
PERMANENT CONTROL POINTS (P.C.P.'S) ARE DESIGNATED THIS: ○

0190-301

46/181

NOT PLATTED

THIS INSTRUMENT WAS PREPARED BY EARL L. OSGARD, JR. IN THE OFFICES OF BENCHMARK
LAND SURVEYING AND MAPPING, INC., 2833 EXCHANGE COURT, WEST PALM BEACH, FLORIDA

BENCHMARK
land surveying and mapping, inc.

RECORD PLAT
ABBEY PARK, PLAT NO. 3

DATE	REVISIONS	BY	OWN ELD	CKD	DATE	NO. OF PAGES