

46/1169

DRAWING NUMBER

DRAWING NUMBER

DRAWING NUMBER

VISTA VERDE SECTION THREE OF VIA VERDE P.U.D. A PORTION OF SECTION 22, TWP. 47 S., RGE. 42 E. PALM BEACH COUNTY, FLORIDA

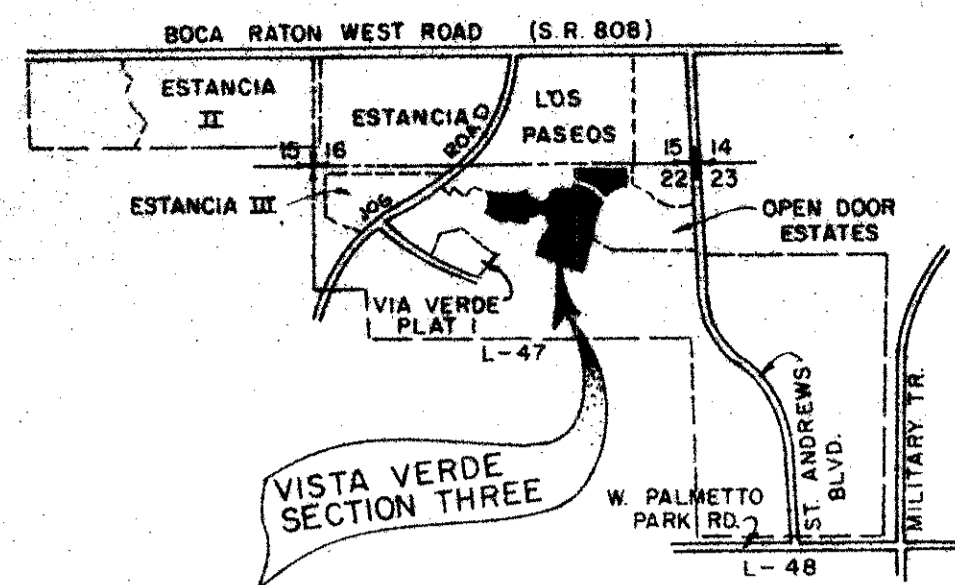
PREPARED BY CARL DESHAY IN THE OFFICES OF
ARTHUR V. STROCK & ASSOCIATES, INC.
CONSULTING ENGINEERS - LAND SURVEYORS
DEERFIELD BEACH - DELRAY BEACH, FLORIDA
COMM. NO. 603708 F.B.

169

State Of Florida
County Of Palm Beach
This Plat Was Filed For
Record At _____ On The
_____ Day Of _____
19____ And Duly Recorded
In Plat Book _____ Pages
And _____

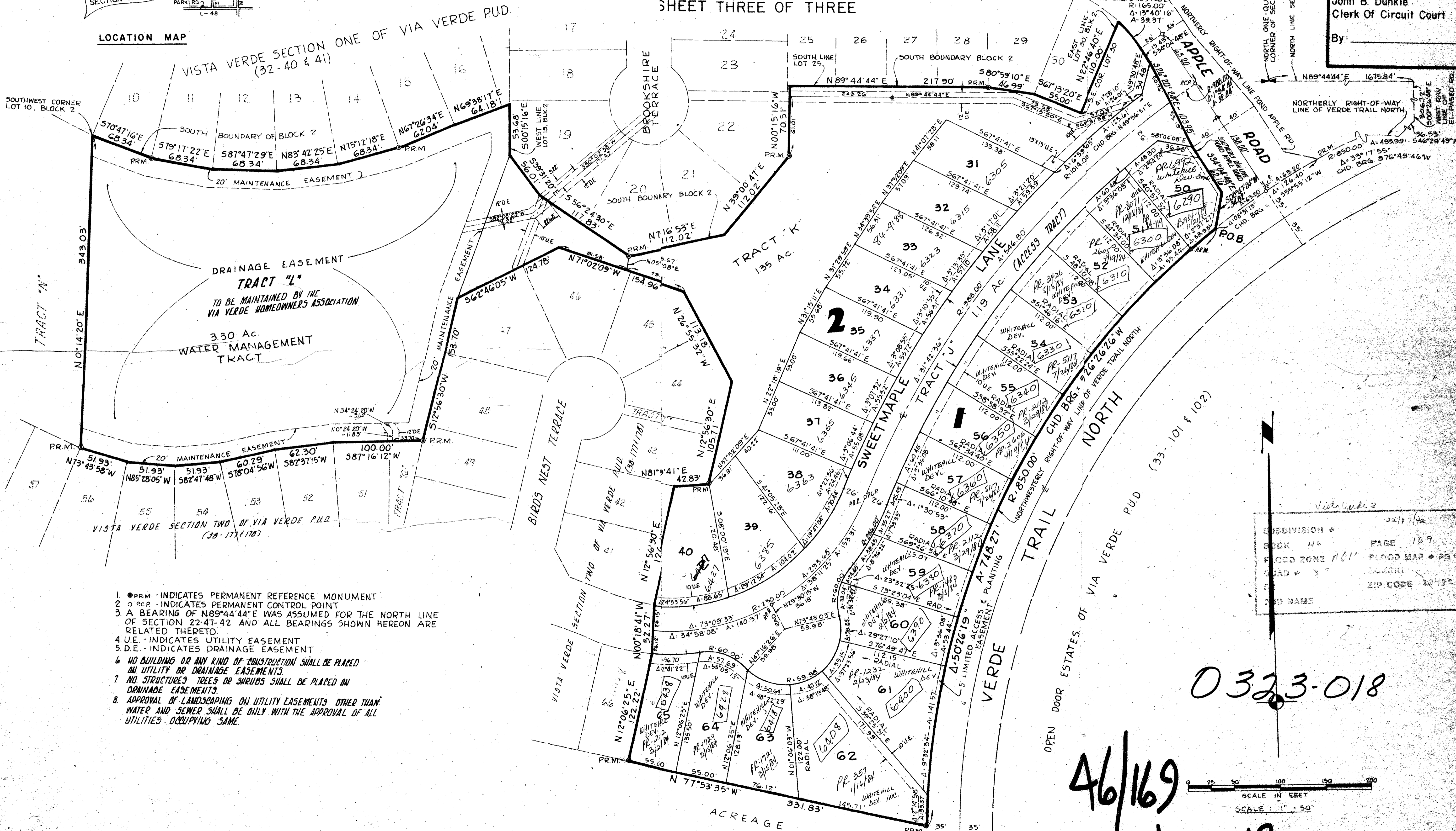
John B. Dunkle
Clerk Of Circuit Court

By: _____



LOCATION MAP

SHEET THREE OF THREE



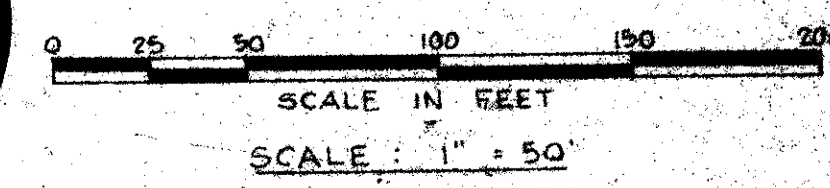
1. ● PRM - INDICATES PERMANENT REFERENCE MONUMENT
2. ○ PCP - INDICATES PERMANENT CONTROL POINT
3. A BEARING OF N89°44'44"E WAS ASSUMED FOR THE NORTH LINE OF SECTION 22-47-42 AND ALL BEARINGS SHOWN HEREON ARE RELATED THERETO.
4. U.E. - INDICATES UTILITY EASEMENT
5. D.E. - INDICATES DRAINAGE EASEMENT
6. NO BUILDING OR ANY KIND OF CONSTRUCTION SHALL BE PLACED ON UTILITY OR DRAINAGE EASEMENTS.
7. NO STRUCTURES, TREES OR SHRUBS SHALL BE PLACED ON DRAINAGE EASEMENTS.
8. APPROVAL OF LANDSCAPING ON UTILITY EASEMENTS OTHER THAN WATER AND SEWER SHALL BE OBTAINED WITH THE APPROVAL OF ALL UTILITIES OCCUPYING SAME.

SUBDIVISION #	Vista Verde 3
BOOK #	44
PAGE #	169
FLOOD ZONE #	101
PLAT MAP #	22-47-42
SECTION	33
TWP	47
RANGE	42
ZIP CODE	33492

0323-018

46/169

VISTA VERDE #3 VIA VERDE



ACREAGE