

46/96

# BOCA COLONY - BOCA PLACE - P. U. D.

Being a Replat of part of TRACT 44, BOCA DEL MAR NO. 3, P. U. D., recorded in Plat Book 30, Pages 82, 83 and 84 of the Public Records of Palm Beach County, Florida

IN PART OF SECTION 27, TOWNSHIP 47 SOUTH, RANGE 42 EAST  
PALM BEACH COUNTY, FLORIDA  
IN 2 SHEETS SHEET NO. 2

GEE & JENSON  
ENGINEERS - ARCHITECTS - PLANNERS, INC.  
WEST PALM BEACH, FLORIDA  
JUNE 1983

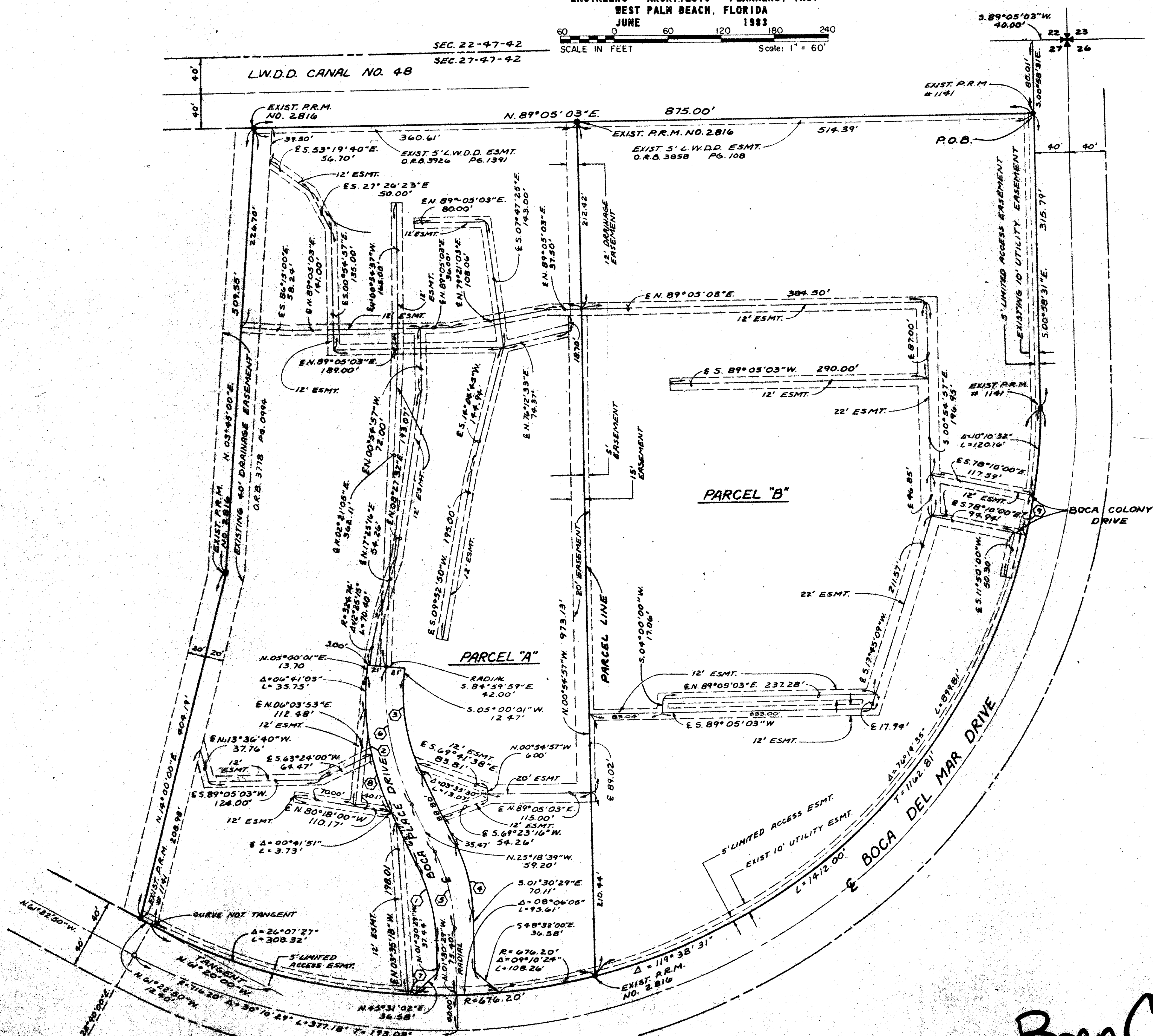
SCALE IN FEET Scale: 1" = 60'

STATE OF FLORIDA  
COUNTY OF PALM BEACH  
This plat was filed for  
record at \_\_\_\_\_ M. this \_\_\_\_\_ day  
of \_\_\_\_\_ 1983, and duly  
recorded in Plat Book No.  
on Page \_\_\_\_\_  
JOHN B. DUNKLE  
Clerk Circuit Court  
By: \_\_\_\_\_ D.C.

96



TRACT 44  
BOCA DEL MAR NO. 3  
PB. 30, PGS. 82 THRU 84



### CURVE DATA

①	R=208.77' Δ=23°48'10" L=86.73' T=94.00'	④	R=189.77' Δ=23°48'10" L=78.85' T=90.00'
②	R=306.43' Δ=30°18'40" L=162.11' T=83.00'	⑤	R=223.00' Δ=25°48'10" L=92.66' T=47.00'
③	R=210.44' Δ=30°18'40" L=111.33' T=57.00'	⑥	R=306.74' Δ=30°18'40" L=162.27' T=83.08'
		⑦	R=676.20' Δ=00°33'49" L=6.65'
		⑧	R=306.43' Δ=2°55'45" L=67.15'
		⑨	R=676.20' Δ=03°52'25" L=46.71'

0205-308

46/96  
Boca Colony Boca Place