

46/37

37

# BOCAIRE GOLF CLUB NO. 1

## A PLAT OF A PORTION OF SECTION 36, TOWNSHIP 46 SOUTH, RANGE 42 EAST

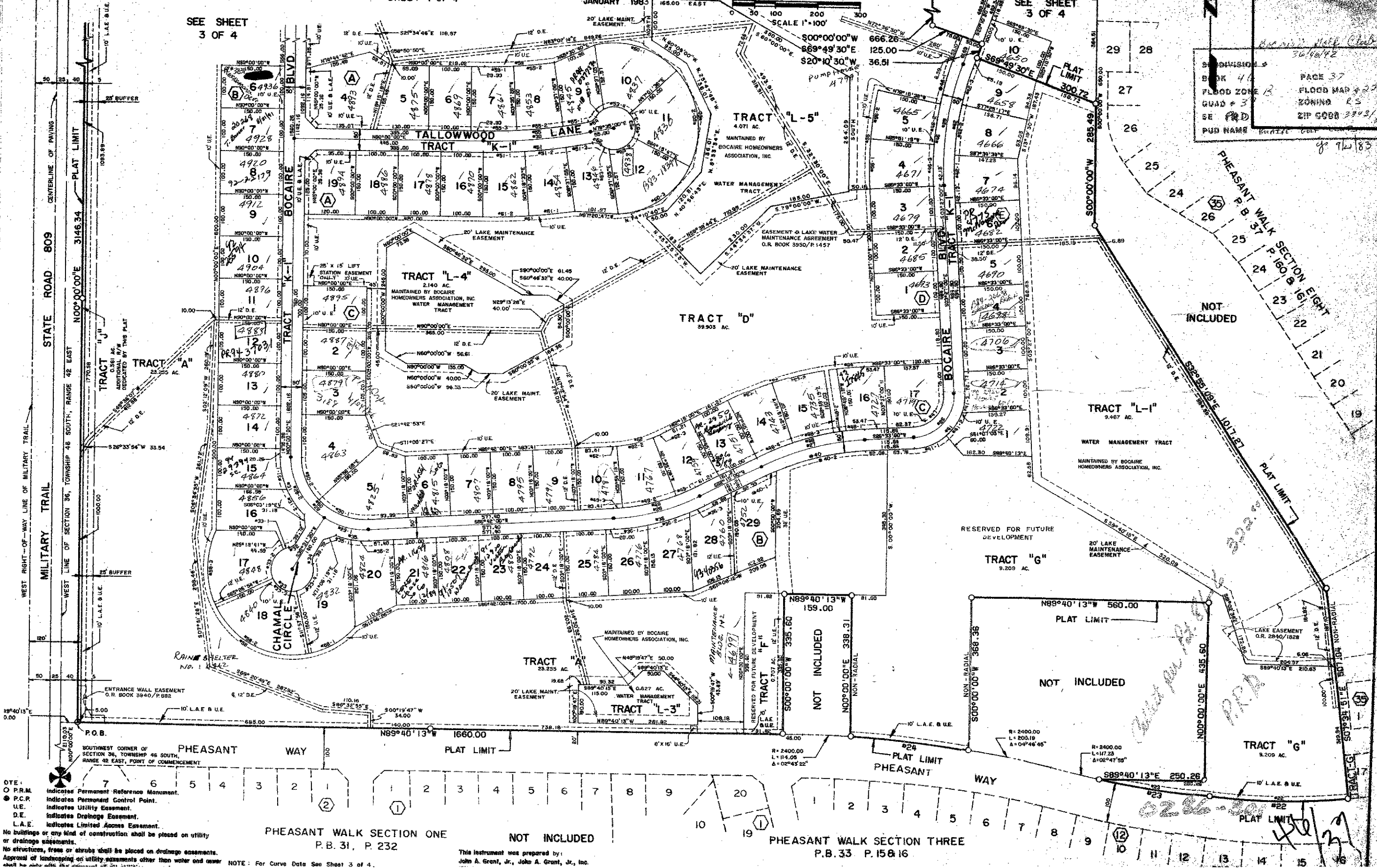
JOHN A. GRANT, JR., INC.  
CONSULTING ENGINEERS AND LAND SURVEYORS

SHEET 4 OF 4

JANUARY 1983

BOCA RATON, FLORIDA

SEE SHEET 3 OF 4



- NOTE:
- P.R.M. Indicates Permanent Reference Monument.
  - P.C.P. Indicates Permanent Control Point.
  - U.E. Indicates Utility Easement.
  - D.E. Indicates Drainage Easement.
  - L.A.E. Indicates Limited Access Easement.

No buildings or any kind of construction shall be placed on utility or drainage easements.  
No structures, fences or shrubs shall be placed on drainage easements.  
Approval of landscaping on utility easements other than water and sewer shall be made with the Department of Public Works.

PHEASANT WALK SECTION ONE  
P.B. 31, P. 232

NOT INCLUDED

PHEASANT WALK SECTION THREE  
P.B. 33, P. 158 16

This instrument was prepared by:  
John A. Grant, Jr., John A. Grant, Jr., Inc.

BOCAIRE GOLF CLUB  
PAGE 37  
FLOOD ZONE 13  
ZONING RS  
ZIP CODE 33431  
DATE 7/2/83

PHEASANT WALK SECTION EIGHT  
P.B. 160 & 161  
NOT INCLUDED

*Handwritten notes:*  
P.P.P.  
P.P.P.

*Handwritten notes:*  
46/37