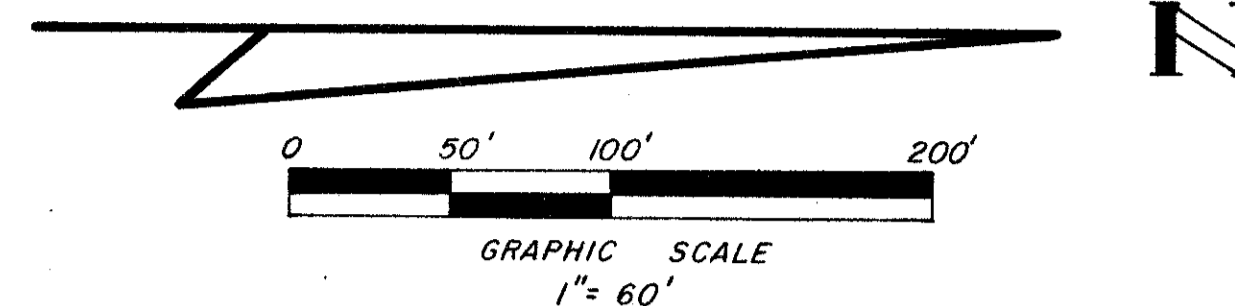


46/32

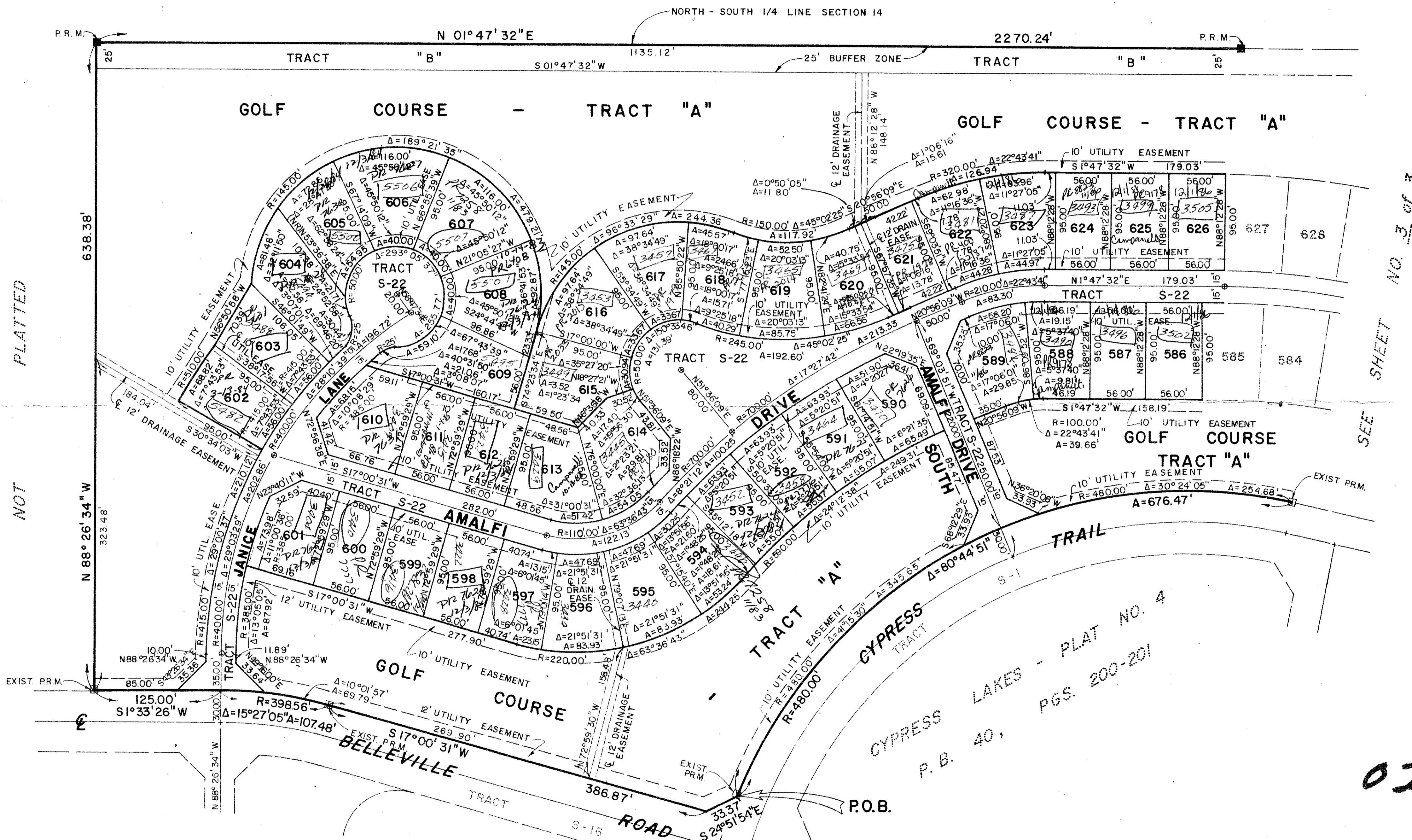
A PLANNED UNIT DEVELOPMENT IN CYPRESS LAKES  
**CYPRESS LAKES - PLAT NO. 7-A**  
 SECTION 14, TOWNSHIP 43 SOUTH, RANGE 42 EAST  
 PALM BEACH COUNTY, FLORIDA  
 IN 3 SHEETS SHEET NO. 2  
 JANUARY, 1983

32

STATE OF FLORIDA }  
 COUNTY OF PALM BEACH }  
 This Plat was filed for record at \_\_\_\_\_ M.  
 this \_\_\_\_\_ day of \_\_\_\_\_  
 19\_\_\_\_, and duly recorded in Plat Book No.  
 \_\_\_\_\_ on page \_\_\_\_\_  
 JOHN B. DUNKLE, Clerk Circuit Court  
 By \_\_\_\_\_, D.C.



NOT PLATTED



PLATTED

NOT

SEE SHEET NO. 3 OF 3

0234.003

THIS INSTRUMENT WAS PREPARED BY JOSEPH M. TUCKER IN THE OFFICES OF ROSSI AND MALAVASI ENGINEERS, INC., 1675 PALM BEACH LAKES BOULEVARD, WEST PALM BEACH, FLORIDA, 33401 PHONE: 737-6546.

46/32  
 RS-Pud  
 Map 2  
 FS-15/6  
 PH-15/6  
 SE det. Clusters

SECTION 14	PAGE 2
BOOK 46	FLOOD MAP #
FLOOD ZONE A	ENGINE 15-PUD
GRID # 30	SIP CODE 3546
BE	
PUD NAME	

CYPRESS LAKES - PLAT NO. 6-A  
 P.B. 44, PGS. 102-103

**ROSSI AND MALAVASI ENGINEERS, INC.**  
 WEST PALM BEACH, FLORIDA

**CYPRESS LAKES-PLAT NO. 7-A**  
 IN 3 SHEETS SHEET NO. 2

Date	JANUARY, 1983	Designed	R. ANDERSON	Scale	1" = 60'	Sheet	2 of 3
Drawn	C. GOSS	Job No.	2542-82	File No.	S-1271-00		
Approved		Checked					