

45/182

# CYPRESS POINT PATIO HOMES - PHASE IIB BOCA WEST - P.U.D.

IN PART OF SECTION 15, TWP. 47 S., RGE. 42 E.  
PALM BEACH COUNTY, FLORIDA  
IN 2 SHEETS SHEET NO. 2

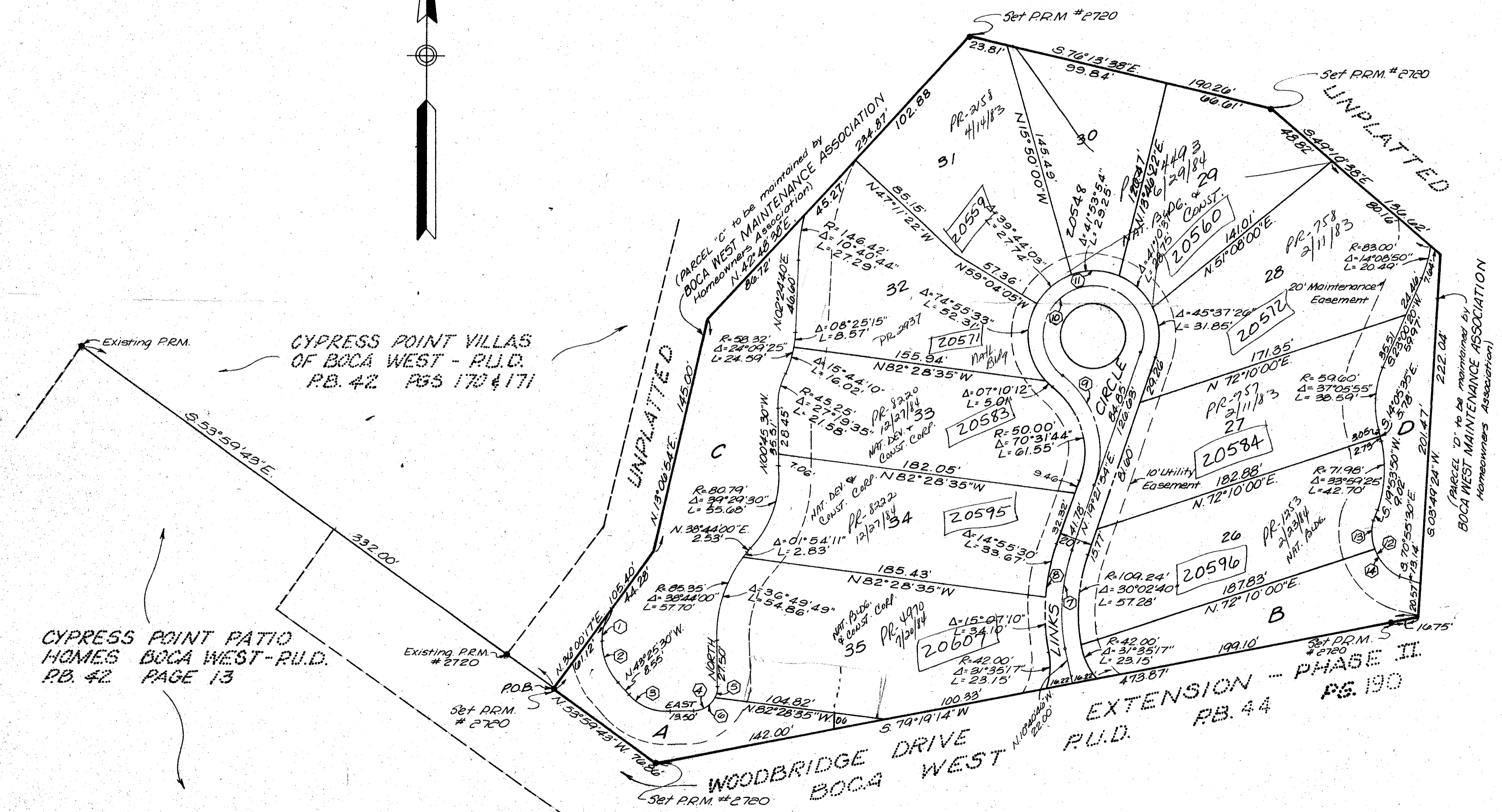
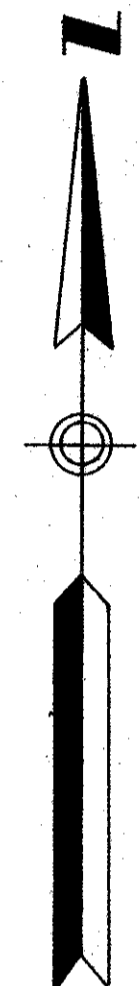
GEE & JENSON  
ENGINEERS, ARCHITECTS, PLANNERS, INC.  
WEST PALM BEACH, FLORIDA

JUNE 1982



# 182

STATE OF FLORIDA  
COUNTY OF PALM BEACH  
This Plat was filed for record at \_\_\_\_\_ M  
this \_\_\_\_\_ day of \_\_\_\_\_, 1982  
and duly recorded in Plat Book No. \_\_\_\_\_  
on page \_\_\_\_\_  
JOHN B. DUNKLE, Clerk Circuit Court  
By: \_\_\_\_\_, D.C.



### CURVE DATA

1	2	3	4
R=32.90 Δ=30°00'17" L=20.71' T=10.71'	R=37.67' Δ=43°25'30" L=28.55' T=15.00'	R=34.85' Δ=46°34'30" L=28.33' T=15.00'	R=15.00' Δ=90°00'00" L=28.56' T=15.00'
R=15.00' Δ=28°44'00" L=7.52'	R=15.00' Δ=01°16'00" L=10.04'	R=119.24' Δ=20°02'40" L=174.90'	R=129.24' Δ=20°02'40" L=174.90'
R=60.00' Δ=70°31'44" L=73.86' T=42.43'	R=30.00' Δ=250°31'44" L=131.18'	R=40.00' Δ=250°31'44" L=174.90'	
R=25.63' Δ=90°19'20" L=40.63' T=24.00'	R=25.63' Δ=37°51'20" L=16.98'	R=25.63' Δ=52°51'54" L=23.45'	

### LAND USE

S.F. LOTS (10)	2.69 Ac
OPEN SPACE/LANDSCAPING	
Parcel A	0.11 Ac
Parcel B	0.16 Ac
DRAINAGE	
Parcel C	0.37 Ac
Parcel D	0.11 Ac
ACCESS TRACT	
Links Circle	0.21 Ac
TOTAL	3.65 Acres
DENSITY	7.75 Units/Acre

0214-309

## CYPRESS POINT PATIO HOMES Ph IIB

# 45/182

SUBDIVISION #	15147142
BOOK	45
PAGE	182
FLOOD ZONE	B
QUAD #	38
ZONING	
SE	
ZIP CODE	33434
PUD NAME	