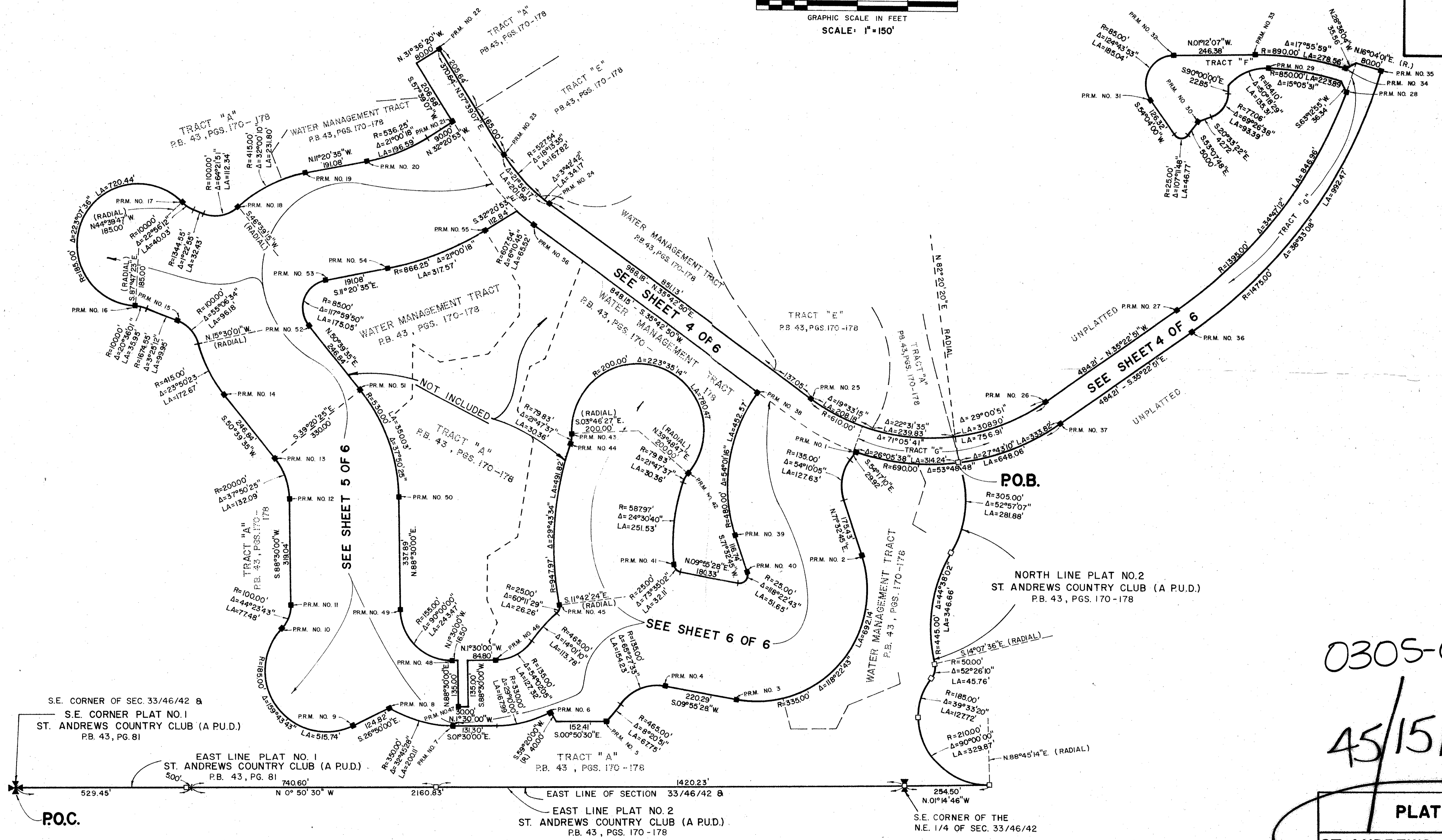
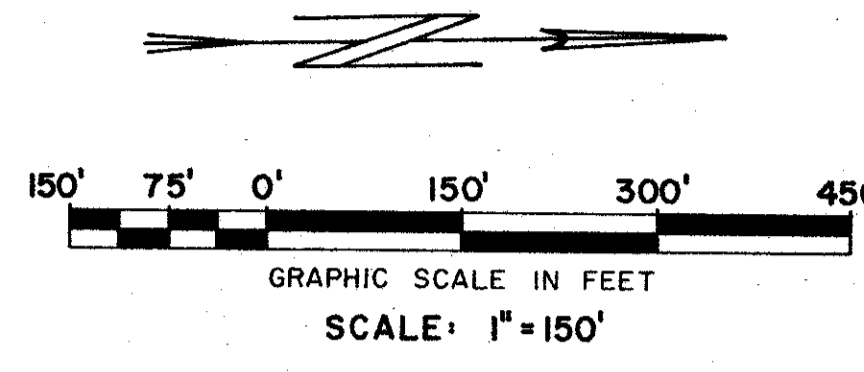


45/151

151



0305-005

45/151

PLAT No. 3
ST. ANDREWS COUNTRY CLUB
(A.P.U.D.)

WILLIAM G. DWYER, INC.			
CONSULTING ENGINEERS, LAND PLANNERS			
201 NORTH PALM BLVD., NORTH PALM BEACH, FL 33408 • 202/946-4033			
3241 S.W. 84TH RD., PALM CITY PLAZA, PALM CITY, FL 32949 • 202/292-0200			
FIELD:	M. BONIN	DATE:	83-0150
OFFICE:	R.M. RODANO	DATE:	MARCH 1983
CK'D:	M.L.F.	REF:	SHEET 3 OF 6

5. PUBLISHERS: WEST PALM BEACH