

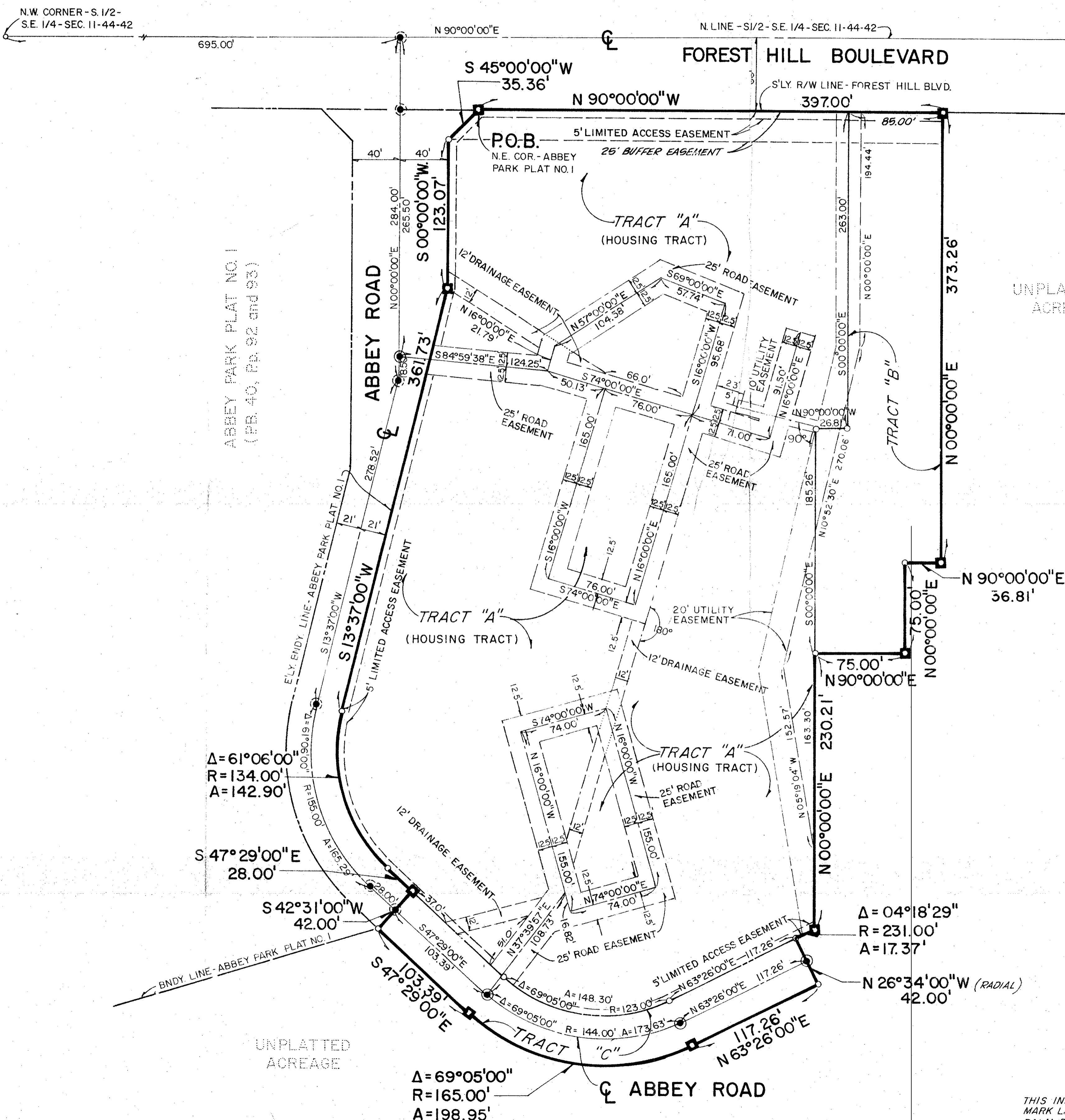
45/137

# A PLANNED-UNIT DEVELOPMENT ABBEY PARK PLAT NO. 2

LYING IN THE S. 1/2 OF THE S.E. 1/4 OF SECTION 11, TOWNSHIP 44  
SOUTH, RANGE 42 EAST, PALM BEACH COUNTY, FLORIDA

JANUARY 1983

137  
STATE OF FLORIDA  
COUNTY OF PALM BEACH  
THIS PLAT WAS FILED FOR  
RECORD AT \_\_\_\_\_ M.  
THIS \_\_\_\_\_ DAY OF  
\_\_\_\_\_, A.D., 1981, AND  
DULY RECORDED IN PLAT  
BOOK \_\_\_\_\_, ON PAGES  
\_\_\_\_\_ AND \_\_\_\_\_  
JOHN B. DUNKLE, CLERK  
CIRCUIT COURT  
BY \_\_\_\_\_, D.C.



0' 50' 100'  
GRAPHIC SCALE

### LEGEND

- INDICATES P.R.M.
- INDICATES P.C.P.

**ABBEY PARK #2**

SUBDIVISION	PAGE
BOOK	FLOOD MAP
FLOOD ZONE	ZONING
QUAD	ZIP CODE
SE	
PUD NAME	

0190-002  
45/137

CONRAD W. SCHAEFER CONSULTING ENGINEERS, INC. PALM BEACH COUNTY, FLORIDA			
<b>RECORD PLAT</b>			
DESIGNED	DRAWN	CHECKED	JOB NO.
DATE	SCALE	APPROVED	FILE NO.
05-06-81	1" = 50'		
			DRAWING NO. P3505
			SHEET OF 2

THIS INSTRUMENT WAS PREPARED BY TERRANCE OSBORNE IN THE OFFICES OF BENCH  
MARK LAND SURVEYING AND MAPPING, INC., 2833 EXCHANGE COURT SUITE "A", WEST  
PALM BEACH, FLORIDA 33409. PHONE: 689-2111