

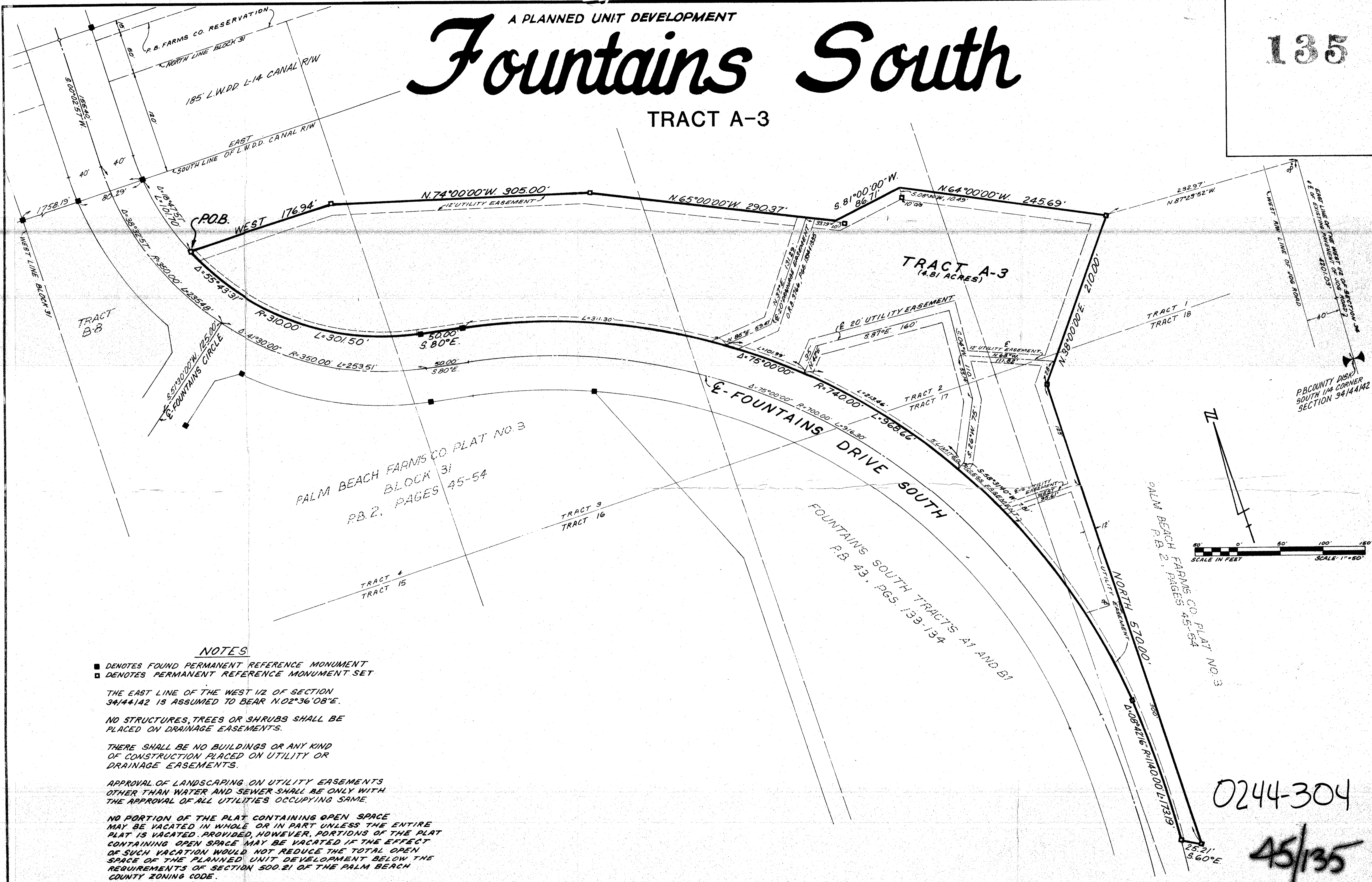
45/135

135

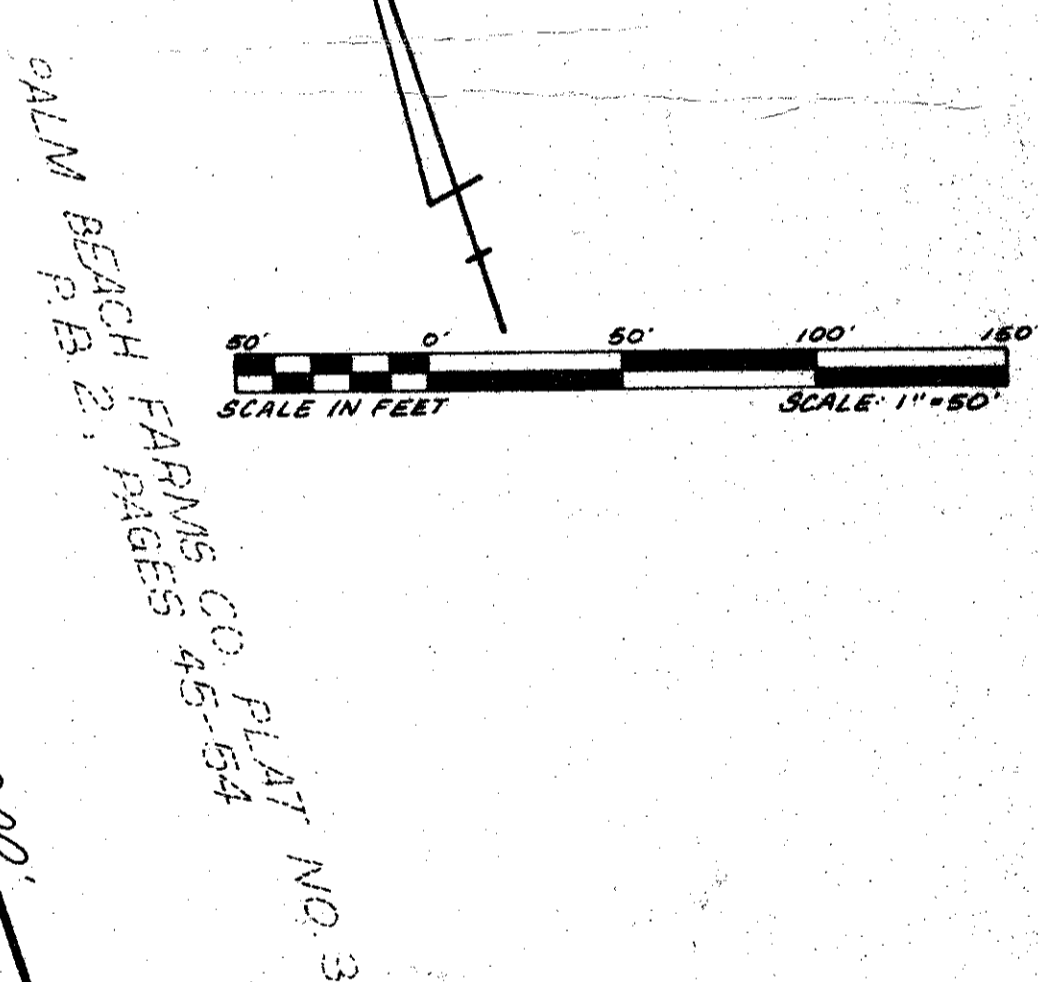
Fountains South

A PLANNED UNIT DEVELOPMENT

TRACT A-3



PALM BEACH FARMS CO PLAT NO. 3
 BLOCK 31
 P.B. 2, PAGES 45-54



NOTES

- DENOTES FOUND PERMANENT REFERENCE MONUMENT
 - DENOTES PERMANENT REFERENCE MONUMENT SET
- THE EAST LINE OF THE WEST 1/2 OF SECTION 34/44/142 IS ASSUMED TO BEAR N.02°36'08\"E.
- NO STRUCTURES, TREES OR SHRUBS SHALL BE PLACED ON DRAINAGE EASEMENTS.
- THERE SHALL BE NO BUILDINGS OR ANY KIND OF CONSTRUCTION PLACED ON UTILITY OR DRAINAGE EASEMENTS.
- APPROVAL OF LANDSCAPING ON UTILITY EASEMENTS OTHER THAN WATER AND SEWER SHALL BE ONLY WITH THE APPROVAL OF ALL UTILITIES OCCUPYING SAME.
- NO PORTION OF THE PLAT CONTAINING OPEN SPACE MAY BE VACATED IN WHOLE OR IN PART UNLESS THE ENTIRE PLAT IS VACATED. PROVIDED, HOWEVER, PORTIONS OF THE PLAT CONTAINING OPEN SPACE MAY BE VACATED IF THE EFFECT OF SUCH VACATION WOULD NOT REDUCE THE TOTAL OPEN SPACE OF THE PLANNED UNIT DEVELOPMENT BELOW THE REQUIREMENTS OF SECTION 500.21 OF THE PALM BEACH COUNTY ZONING CODE.

0244-304

45/135

| | | | | |
|---|----|-----------------|--------------|---|
| ADAIR & BRADY, INC. CONSULTING ENGINEERS & LAND SURVEYORS | | WEST PALM BEACH | SCALE 1"=50' | RECORD PLAT FOUNTAINS SOUTH TRACT A-3 |
| MJM | dp | | | |